

Monthly Report on Short-term Transactions of Electricity in India

August 2024



Economics Division
Central Electricity Regulatory Commission
6th, 7th & 8th Floors, Tower B, World Trade Centre
Nauroji Nagar, New Delhi- 110029



Contents

S.No.	Contents	Page No
	Contents	i
	List of Tables	ii
	List of Figures	iii
	Abbreviations	iv
1	Introduction	1
2	Volume of Short-term Transactions of Electricity and DSM	1
3	Price of Short-term Transactions of Electricity and DSM Charges	4
3.1	<i>Price of electricity transacted through Traders</i>	4
3.2	<i>Price of electricity transacted through Power Exchanges</i>	4
3.3	<i>DSM Charges</i>	4
4	Trading Margin	5
5	Volume of Short-term Transactions of Electricity (Regional Entity-wise)	5
6	Congestion on Inter-State Transmission Corridor for Day-Ahead Market and Real-Time Market on Power Exchanges	6
7	Volume and Price of Renewable Energy Certificates (RECs)	7
8	Inferences	8

S.No.	List of Tables	Page No.
Table-1	Volume of Short-term Transactions of Electricity and DSM (All India)	11
Table-2	Percentage Share of Electricity Transacted by Trading Licensees	13
Table-3	Price of Electricity Transacted through Traders	14
Table-4	Price of Electricity Transacted through Traders (Time-wise)	14
Table-5	Price of Electricity Transacted in Day Ahead Market	14
Table-6	Price of Electricity Transacted in Green Day Ahead Market	14
Table-7	Price of Electricity Transacted in High Price Day Ahead Market	14
Table-8	Price of Electricity Transacted in Real Time Market	14
Table-9	Volume and Price of Electricity in Term Ahead Market of IEX	14
Table-10	Volume and Price of Electricity in Term Ahead Market of PXIL	15
Table-11	Volume and Price of Electricity in Term Ahead Market of HPX	15
Table-12	Volume and Price of Electricity in Green Term Ahead Market of IEX	15
Table-13	Volume and Price of Electricity in Green Term Ahead Market of PXIL	15
Table-14	Volume and Price of Electricity in Green Term Ahead Market of HPX	15
Table-15	Volume and Price of Electricity in High Price Term Ahead Market of IEX	15
Table-16	Volume and Price of Electricity in High Price Term Ahead Market of PXIL	15
Table-17	Volume and Price of Electricity in High Price Term Ahead Market of HPX	15
Table-18	Volume of Electricity Sold through Bilateral	17
Table-19	Volume of Electricity Purchased through Bilateral	20
Table-20	Volume of Electricity Sold in Day Ahead Market through Power Exchanges	21
Table-21	Volume of Electricity Purchased in Day Ahead Market through Power Exchanges	24
Table-22	Volume of Electricity Sold in Green Day Ahead Market through Power Exchanges	25
Table-23	Volume of Electricity Purchased in Green Day Ahead Market through Power Exchanges	26
Table-24	Volume of Electricity Sold in High Price Day Ahead Market through Power Exchanges	27
Table-25	Volume of Electricity Purchased in High Price Day Ahead Market through Power Exchanges	27
Table-26	Volume of Electricity Sold in Real Time Market through Power Exchanges	28
Table-27	Volume of Electricity Purchased in Real Time Market through Power Exchanges	32
Table-28	Total Volume of Net Transactions through Power Exchanges (Regional Entity-wise)	34
Table-29	Details of Congestion in Power Exchanges	38
Table-30	Volume of Transactions through Power Exchanges (Day-wise)	39
Table-31(a)	Price of Day Ahead Transactions of Electricity (Day-Wise)	40
Table-31(b)	Price of Green Day Ahead Transactions of Electricity (Day-Wise)	41
Table-31(c)	Price of Real Time Transactions of Electricity (Day-Wise)	42
Table-31(d)	Price of High Price Day Ahead Transactions of Electricity (Day-Wise)	43
Table-32	Volume of Transactions through Power Exchanges (Regional Entity-wise)	44
Table-33	Volume and Charges under DSM (Day wise)	48
Table-34	Volume of Electricity Under drawal/ Over Injection (Exported) under DSM	49
Table-35	Volume of Electricity Over drawal/ Under Injection (Imported) under DSM	54
Table-36	Volume and Price of Renewable Energy Certificates (RECs) Transacted through Power Exchanges and through Traders (Bilateral)	59
Table-35(a)	Volume and Price of Cross Border Trade through Day Ahead Market at IEX	59
Table-35(b)	Volume and Price of Cross Border Trade through Real Time Market at IEX	59

S. No.	List of Figures	Page No.
Figure-1	Volume of various kinds of Electricity Transactions in Total Electricity Generation	11
Figure-2	Volume of Short-term Transactions of Electricity and DSM Volume	11
Figure-3	Volume transacted in different markets segments on Power Exchanges	12
Figure-4	Volume of transactions on Power Exchange and DSM Volume (Day-wise)	12
Figure-5	Percentage Share of Electricity Transacted by Trading Licensees	13
Figure-6	Weighted Average Price of Short-term Transactions of Electricity	16
Figure-7	Weighted Average Price of Short-term Transactions of Electricity (Day-wise)	16

Abbreviations

Abbreviation	Expanded Version
ABSP_ANTP	Acme Bhiwadi Solar Power Private Limited, Anantpur
ACBIL	ACB (India) Limited
ACP	Area Clearing Price
ACV	Area Clearing Volume
ACME_SLR	ACME Solar Power Project
ACME_RUMS	Acme Rewa Ultra Mega Solar Project
ADANI_4RE	Adani Renewable Energy Holding Four Limited
ADANI GREEN	Adani Green Energy Limited
ADANIHB_SLR	Adani Hybrid Energy Jaisalmer One Limited (Solar)
ADANI_SLR 4	Adani Solar Energy Four Private Limited
ADANIHB_WIND	Adani Hybrid Energy Jaisalmer One Limited (Wind)
ADEPT	Adept Renewable Technologies Private Limited
ADY1_PVGD	Adyah Solar Energy Pvt Ltd., Block 1 Pavagada Solar Park
ADY2_PVGD	Adyah Solar Energy Pvt Ltd., Block 2 Pavagada Solar Park
ADY3_PVGD	Adyah Solar Energy Pvt Ltd., Block 3 Pavagada Solar Park
ADY6_PVGD	Adyah Solar Energy Pvt Ltd., Block 6 Pavagada Solar Park
ADY10_PVGD	Adyah Solar Energy Pvt Ltd., Block 10 Pavagada Solar Park
ADY13_PVGD	Adyah Solar Energy Pvt Ltd., Block 13 Pavagada Solar Park
AGEMPL BHUJ	Adani Green Energy (MP) Ltd.,Bhuj
AHEJOL_S_FTG2	Adani Hybrid Energy Jaisalmer One Limited (SOLAR)
AHEJOL_W_FTG2	Adani Hybrid Energy Jaisalmer One Limited (WIND)
AHEJ2L_SOLAR	Adani Hybrid Energy Jaisalmer Two Limited (Solar)
AHEJ3L_SOLAR	Adani Hybrid Energy Jaisalmer Three Limited (Solar)
AHEJ4L_SOLAR	Adani Hybrid Energy Jaisalmer Four Limited-Hybrid Solar
AHEJ4L_WIND	Adani Hybrid Energy Jaisalmer Four Limited-Hybrid Wind
AHSP_ANTP	Acme Hisar Solar Power Private Limited,Anantpur
AKS_PVGD	ACME Kurukshetra Solar Energy Pvt. Ltd
AKSP_ANTP	Acme Karnal Solar Power Private Limited,Anantpur
ALFANAR_BHUJ	Alfanar Group Wind Project, Bhuj, Gujarat
ALTRA XERGI	Altra Xergi Power Private Limited
AMP_GREEN6	Amp Energy Green Six Private Limited
AMPLUS_AGES	Amplus Ages Private Limited
AMPS Hazira	Arcelor Mittal Nippon Steel, Hazira
APTEL	Appellate Tribunal for Electricity
ARERJL_SLR	Adani Renewable Energy Park Rajasthan Ltd.
ARINSUM_RUMS	Solenergi RewaUltraMega Solar Project
ARS_PVGD	ACME REWARI Solar Power Pvt Ltd.
ARTPP	Adani Power Limited - Raipur TPP
ASEJTL_SLR	Adani Solar Energy Jodhpur Two Ltd.
AVAADA1_PVGD	Avaada Solar Energy Private Ltd., Pavagada Project 1
AVAADA2_PVGD	Avaada Solar Energy Private Ltd., Pavagada Project 2
AVADARJHN_SLR	Avaada Rjhn Private Limited_Solar
AYANA_NPKUNTA	Ayana Power, NP Kunta
AZURE_ANTP	Azure Power,Anantpur
AZURE_PVGD	Azure Power,Pavagada
AZURE_SLR	Azure Power Solar Power Project
AZURE34_SLR	Azure Power 34 Pvt. Ltd. Solar Power Project
AZURE43_SLR	Azure Power Forty Three Private Limited
BALCO	Bharat Aluminum Company Limited
BARC	Bhabha Atomic Research Centre
BASOCHHU HEP	Basochhu Hydropower Plant Bhutan
BBMB	Bhakra Beas Management Board

BETAM_TCN	Betam Wind Energy Private Limited, Tuticorin
BHADRAVATHI HVDC	Bhadravathi High Voltage Direct Current Link
BRBCL	Bhartiya Rail Bijlee Company Limited
CEA	Central Electricity Authority
CERC	Central Electricity Regulatory Commission
CGPL	Coastal Gujarat Power Limited
CHUKHA HEP	Chhukha Hydroelectric Project, Bhutan
CHUZACHEN HEP	Chuzachen Hydro Electric Power Project
CLEAN_SLR	Clean Solar Power Pvt. Ltd
CLEANSPL_SLR	Clean Solar Jodhpur Pvt Ltd
COASTGEN	Coastal Energen Private Limited
DAGACHU	Dagachhu Hydro Power Corporation
DAM	Day Ahead Market
DEVKOOT_SLR	Devkoot Solar Power Plant, NTPC Green Energy Ltd.
DCPP	Donga Mahua Captive Power Plant
DD&DNH	Daman and Diu & Dadar Nagar Haveli
DGEN MEGA POWER	DGEN Mega Power Project
DGPCL Bhutan	Druk Green Power Corporation Ltd., Bhutan
DHARIWAL POWER	Dhariwal Power Station
DIKCHU HEP	Dikchu Hydro-electric Project, Sikkim
DOYANG HEP	Doyang Hydro Electric Project
DSM	Deviation Settlement Mechanism
DVC	Damodar Valley Corporation
EDEN_SLR	Eden RE Cite Private limited
EMCO	EMCO Energy Limited
ESPL_RADHANESDA	Electro Solaire Private Limited, Radhanesda
ESSAR POWER	Essar Power Limited
FORTUM1_PVGD	Fortum Finnsurya Energy Private Ltd, Pavagada Project 1
FORTUM2_PVGD	Fortum Finnsurya Energy Private Ltd, Pavagada Project 2
FRV_ANTP	Fotowatio Renewable Ventures, Anantapur
FRV_NPK	Fotowatio Renewable Ventures, NP Kunta
GIPCL_RADHANESDA	Gujarat Industries Power Company Ltd, Radhanesda
GIWEL_BHUJ	Green infra wind energy Limited, Bhuj
GIWEL_TCN	Green Infra Wind Energy Limited, Tuticorin
GMR CHHATTISGARH	GMR Chhattisgarh Energy Limited
GMR KAMALANGA	GMR Kamalanga Energy Ltd.
G-DAM	Green Day Ahead Market
GRIAN	Grian Energy Private Limited
GSECL P-II	GSECL Raghnesda Solar Park (Phase-II)
G-TAM	Green Term Ahead Market
HPX	Hindustan Power Exchange Limited
HP-DAM	High Price Day Ahead Market
HP-TAM	High Price Term Ahead Market
HVDC ALPD	Alipurduar High Voltage Direct Current Link
HVDC CHAMPA	Champa-Kurukshetra High Voltage Direct Current Link
HVDC PUS	Pasauli High Voltage Direct Current Link
HVDC RAIGARH	Raigarh-Pugalur High Voltage Direct Current Link
IBEUL	Ind Bharat Energy Utkal Limited
IEX	Indian Energy Exchange Limited
IGSTPS	Indira Gandhi Super Thermal Power Station Jhajjar
IL&FS	Infrastructure Leasing & Financial Services Limited
INOX_BHUJ	INOX Wind Limited, Bhuj, Gujarat
J&K	Jammu & Kashmir
JAYPEE NIGRIE	Jaypee Nigrie Super Thermal Power Project

JHABUA POWER MP	Jhabua Thermal Power Project
JINDAL POWER	Jindal Power Limited
JINDAL STAGE-II	Jindal Power Ltd Stage II
JITPL	Jindal India Thermal Power Ltd.
JORETHANG	Jorethang Loop Hydroelectric Power Project
JSW_RENEW_2	JSW Renew Energy Two Limited
KAPP 3&4	Kakrapar Atomic Power Station Unit 3 & 4
KARCHAM WANGTOO	Karcham Wangtoo H.E. Project
KBUNL	Kanti Bijlee Utpadan Nigam Limited
KHURJA STPP	Khurja Super Thermal Power Plant
KORBA WEST POWER	Korba West Power Company Limited
KOTESHWAR	Koteshwar Hydro Power project
KREDL_PVGD	Karnataka Renewable Energy Development Ltd,Pavagada
KSK MAHANADI	KSK Mahanadi Power Ltd
KSMPL_SLR	Kilaj Solar (Maharashtra) Private Limited
KURICHU HEP	Kurichhu Hydro-electric Power Station, Bhutan
LANKO_AMK	LancoAmarkantak Power Private Limited
LANKO BUDHIL	LancoBudhil Hydro Power Private Limited
LANKOKONDAPALLY	Lanco Kondapally Power Private Limited
LOKTAK	Loktak Power Project
MAHINDRA_RUMS	Mahindra Rewa Ultra Mega Solar Project
MAHOBA_SLR	Mahoba Solar Power Project
MALANA	Malana Hydroelectric Plant
MANGDECHU HEP	Mangdechhu Hydroelectric Project, Mangdechhu River, Bhutan
Maruti Coal	Maruti Clean Coal and Power Limited
MB POWER	MB Power Ltd
MEENAKSHI	Meenakshi Energy Private Limited
MRPL	Mahindra Renewables Private Limited
MSEPL	Masaya Solar Energy Private Limited
MSRPL	Mega Solis Renewables Pvt. Ltd.
MTPS	TATA Power Mundra Thermal Power Station
MTPS II	Muzaffarpur Thermal Power Station – Stage II
MYTRAH_TCN	Mytrah Energy (India) Private Limited,Tuticorin
MU	Million Units
NAPP	Narora Atomic Power Plant
NCR ALLAHABAD	North Central Railway, Allahabad
NEEPCO	North Eastern Electric Power Corporation Limited
NEP	Nepal
NFL	National Fertilisers Limited
NHPC STATIONS	National Hydro Electric Power Corporation Ltd. Stations
NJPC	Nathpa Jhakri Hydroelectric Power Station
NLC	Neyveli Lignite Corporation Limited
NLDC	National Load Dispatch Centre
NOKHRA_STPP	Nokhra Solar Power Plant, NTPC Green Energy Ltd.
NPGC	Nabinagar Power Generating Company (Pvt.) Limited
NREL_DAYAPAR (W)	NREL-Dayapar Wind
NSPCL	NTPC - SAIL Power Company Private Limited
NTECLVallur	NTPC Tamil Nadu Energy Company Limited Vallur
NTPC_ANTP	NTPC Anantapur
NTPC STATIONS	National Thermal Power Corporation Ltd. Stations
NTPL	NLC Tamil Nadu Power Limited
NVVN	NTPC Vidyut Vyapar Nigam Limited
OCF	Order Carry Forward
ONEVOLT	Onevolt Energy Private Limited

ONGC Platana	ONGC Tripura Power Company
OPGC	Odisha Power Generation Corporation
ORANGE_TCN	Orange Renewable Power Pvt. Ltd, Tuticorin
OSTRO	Ostro Energy Private Limited
OTC	Over The Counter
PARAM_PVGD	Parampujya Solar Energy Private Ltd
PARE HEP	Pare hydroelectric project, Arunachal Pradesh
PXIL	Power Exchange India Limited
RAMPUR HEP	Rampur Hydro Electric Power Project
RANGIT HEP	Rangit Hydroelectric power project
RANGANADI HEP	Ranganadi Hydro Electric Power Project, Arunachal Pradesh
RAP-B	Rajasthan Atomic Power Plant-B
RAP-C	Rajasthan Atomic Power Plant-C
RAPP 7&8	Rajasthan Atomic Project 7&8
REC	Renewable Energy Certificate
REGL	Raigarh Energy Generation Limited
RENEW_BHACHAU	ReNew Power Limited, Bhachau
RENEW_BHUJ	ReNew Power Limited, Bhuj
RENEW_PVGD	ReNew Wind Energy (TN2) Private Limited
RENEW_ROSHNI FATEHGARH	Renew Surya Roshni Private Limited-Fatehgarh-III PS
RENEW_SAAVAN	Renew Surya Aayan Private Limited
RENEW_SLR_BKN	Renew Solar Bikaner
RENEW_SOJAS	Renew Surya Ojas Private Limited-Wind
RENEW_SPRATAP	Renew Surya Pratap Private Limited
RENEW_SR_SLR	Renew Surya Ravi Private Limited (Solar)
RENEW_SVIHAAN	Renew Surya Vihaan Private Limited
RENEW_ROSHNI	Renew Surya Roshni Private Limited Koppal PS
RENEWJH_SLR	Renew Solar Energy (Jharkhand Three) Private Limited
RENEWURJA_SLR	ReNew Solar Urja Private Limited
RGPPL_IR	Ratnagiri Gas and Power Private Ltd., supply to Indian Railways
RGPPL_OTHER	Ratnagiri Gas and Power Private Limited
RISING_SLR	Rising Sun Energy Pvt. Ltd.
RLDC	Regional Load Dispatch Centre
RONGNICHU HEP	Rongnichu Hydro Electric Power Project
RPREL	Raipur Energen Limited
RSTPS_FSPP	NTPC Ramagundam STPS- Floating Solar PV Project
RTC	Round The Clock
RTM	Real Time Market
SasanUMPP	Sasan Ultra Mega Power Project
SB_SLR	Soft Bank Solar
SB6_POKARAN	SB Energy Six Private Limited, Pokaran
SBG_CLEANTECH_SLR	SBG Cleantech Ltd
SBG_NPK	SB Energy Solar Private Limited, NP Kunta
SBG_PVGD	SB Energy Solar Private Limited, Pavagada
SBSR_SLR	SBSR Power Cleantech Eleven Private Limited
SEMBCORP	Sembcorp Gayatri Power Ltd
SIMHAPURI	Simhapuri Energy Private Limited
SKS Power	SKS Power Generation Chhattisgarh Limited
SESPL	Srijan Energy Systems Pvt. Ltd.
SINGOLI BHATWARI HEP	Singoli-Bhatwari Hydroelectric Project, Uttarakhand
SKRPL	Sitac Kabini Renewables Pvt. Ltd.
SPRNG_NPKUNTA	Sprng Energy, NP Kunta
SPRING_PUGALUR	Spring Solar Power Private Limited, Pugalur
SUL	Sikkim Urja Limited

TALA HEP	Tala Hydroelectric Project, Bhutan
TASHIDENG HEP	Tashiding Hydro Electric Project, Sikkim
TATA_ANTP	TATA Power Anantapur
TATA_PVGD	Tata Power Renewable Energy Ltd
TATA_SLR	Tata Solar
TAM	Term Ahead Market
TEESTA STG3	Teesta Stage 3 Hydro Power Project
TEHRI	Tehri Hydro Electric Power Project
TESPL	Transition Energy Services Private Limited
THAR1_SLR	Thar Surya Ravi One Pvt Ltd
THERMAL POWERTECH	Thermal Powertech Corporation India Limited
TPREL_RADHANESDA	Tata Power Renewable Energy Limited, Radhanesda
TPSL	TP Saurya Limited
VINDHYACHAL HVDC	Vindhyachal High Voltage Direct Current Link
WA	Weighted Average
YARROW_PVGD	Yarrow Infra Structure Private Ltd

1. Introduction

1.1. A well-functioning electricity market requires an effective market monitoring process. The monthly report on short-term transactions of electricity, published by CERC since 2008 as part of its market monitoring process, provides a snapshot of key aspects of short-term transactions of electricity in India. Here, “short-term transactions of electricity” refers to the contracts of less than one year period for electricity transacted (inter-State) - through Trading Licensees, directly between entities and on Power Exchanges (Indian Energy Exchange Ltd. (IEX), Power Exchange India Ltd. (PXIL) and Hindustan Power Exchange Ltd. (HPX)). “DSM Volume” includes the volume recorded under Deviation Settlement Mechanism. The main objectives of the report are: (i) to analyse the volume and price of the short-term transactions of electricity; (ii) to assess the competition among the market players; (iii) to analyse the effect of congestion on the volume of electricity transacted through power exchanges; (iv) to provide information on volume and price of Renewable Energy Certificates (RECs) transacted through power exchanges; and (v) to disseminate all other relevant market information. The analysis of short-term transactions of electricity and DSM volume during the month of **August 2024** is presented in the following sections.

2. Volume of Short-term Transactions of Electricity and DSM

2.1. During August 2024, total electricity generation, excluding generation from renewable and captive power plants in India, was 132023.46 MU (Table-1). Of the total electricity generation, 18.13% was transacted through short-term and DSM, comprising of 8.74% through bilateral (through Traders and Term-Ahead contracts on power exchanges, and directly between entities), followed by 6.86% through power exchanges {Day Ahead Market (DAM) (including G-DAM) and Real Time Market (RTM)}, and 2.54% through DSM (Table-1 & Figure-1).

2.2. Of the total short-term transactions and DSM volume (23939.11 MU), 48.18% was transacted through bilateral¹ (i.e. through Traders, Term-Ahead contracts on power exchanges and directly between entities), followed by 37.82% through power exchanges {DAM (including G-DAM & HP-DAM) and RTM}, and 13.99% through DSM (Table-1 & Figure-2). The daily volume of short-term transactions is shown in Table-30. Figure-4 shows the daily volume trend for short-term transactions and DSM volume.

¹ includes bilateral short-term transactions under GNA and T-GNA

2.3. Of the total volume of electricity transacted through power exchanges, 49.50% of the volume was transacted in DAM (including G-DAM & HP-DAM), followed by 31.07% in RTM and 19.43% in Term Ahead Market (TAM) (including G-TAM & HP-TAM) (Figure-3).

2.4. The share of electricity traded by each trading licensee is given in Table-2 & Figure-5 shows the share of top 5 trading licensees. The volume of electricity transacted by the trading licensees includes bilateral transactions and transactions undertaken through power exchanges. There were 62 trading licensees as of August 2024. Of which, 39 trading licensees were engaged in short-term trading. The top 5 trading licensees, namely PTC India Ltd., NTPC Vidyut Vyapar Nigam Ltd., Adani Enterprises Ltd., Tata Power Trading Company (P) Ltd. and Manikaran Power Ltd., had a share of 80.78% in the total volume of electricity traded by all the licensees.

2.5. Herfindahl-Hirschman Index (HHI), a commonly accepted index to calculate market concentration, has been used to measure competition among trading licensees. An increase in the HHI generally indicates a decrease in competition and an increase in market concentration, and vice versa. The HHI below 0.15 indicates non-concentration, HHI between 0.15 and 0.25 indicates moderate concentration, and HHI above 0.25 indicates high concentration. The HHI has been computed based on the volume of electricity traded (inter-State & intra-State) by inter-State trading licensees, and it was 0.1669 for the month of August 2024, which indicates moderate concentration of market power (Table-2).

2.6. The volume of electricity transacted in the DAM of IEX was 4711.98 MU, while no electricity was transacted in the DAM of PXIL and HPX. The volume of total buy bids and sell bids was 7119.15 MU and 10425.23 MU, respectively in IEX; 1.17 MU and 30.09 MU respectively in PXIL; & 0.20 MU and 41.26 MU, respectively in HPX.

2.7. Of the total volume of electricity transacted in the DAM of IEX, the volume sold by the neighbouring countries of India was 454.23 MU, while no volume was purchased by the neighbouring countries, under the Cross Border Trade of electricity through power exchanges (Table-37(a)). No Cross Border transaction of electricity was undertaken through PXIL and HPX.

2.8. The volume of electricity transacted in the G-DAM of IEX was 851.47 MU, while no electricity was transacted in the G-DAM of PXIL and HPX. The volume of total buy bids and sell bids was 2910.38 MU and 1218.79 MU, respectively, in IEX. No bids were received in PXIL and HPX.

2.9. No electricity was transacted in the HP-DAM of IEX, PXIL and HPX. While the volume of total sell bids was 2550.94 MU, no buy bids were received in IEX. No bids were received in PXIL and HPX.

2.10. The volume of electricity transacted in the RTM of IEX, PXIL and HPX was 3484.86 MU, 4.70 MU and 1.76 MU, respectively. The volume of total buy bids and sell bids was 4937.93 MU and 7868.87 MU, respectively in IEX, 6.87 MU and 36.56 MU in PXIL, & 3.39 MU and 3.18 MU, respectively in HPX. The variation in the volume of buy bids and sell bids placed through power exchanges shows variation in the demand and supply position.

2.11. Of the total volume of electricity transacted in the RTM of IEX, the volume sold by the neighbouring countries of India was 8.95 MU, while no volume was purchased, under the Cross Border Trade of electricity through power exchanges (Table-37(b)). No Cross Border transaction of electricity was undertaken through PXIL and HPX.

2.12. The volume of electricity transacted in the TAM of IEX, PXIL and HPX was 885.84 MU, 776.23 MU and 351.74 MU, respectively (Table-9, Table-10 & Table-11). The volume of electricity transacted in the Green Term Ahead Market (G-TAM) of IEX, PXIL and HPX was 21.70 MU, 41.98 MU and 91.64 MU, respectively (Table-12, Table-13 & Table-14).

2.13. The volume of electricity transacted in the HP-TAM of IEX and PXIL was 6.78 MU and 7.86 MU, respectively. No electricity was transacted in HP-TAM of HPX (Table-15, Table-16 & Table-17).

3. Price of Short-term Transactions of Electricity and DSM charges

3.1. **Price of electricity transacted through Traders:** The minimum, maximum and weighted average sale prices for the electricity transacted through traders were ₹1.41/kWh, ₹10.00/kWh and ₹6.70/kWh, respectively (Table-3). The weighted average sale prices were also computed for the electricity transacted during Round the Clock (RTC), Peak and Off-peak periods separately, and the sale prices were ₹6.69/kWh, ₹9.06/kWh and ₹5.86/kWh, respectively (Table-4).

3.2. **Price of electricity transacted through Power Exchanges:** The minimum, maximum and weighted average prices for the electricity transacted in the DAM of IEX were ₹0.30/kWh, ₹10.00/kWh and ₹4.13/kWh, respectively (Table-5). The minimum, maximum and weighted average prices for the electricity transacted in the G-DAM of IEX were ₹1.30/kWh, ₹10.00/kWh and ₹3.69/kWh, respectively (Table-6). The minimum, maximum and weighted average prices for the electricity transacted in the RTM of IEX were ₹0.20/kWh, ₹10.00/kWh and ₹3.32/kWh, respectively. These prices in the RTM of PXIL were ₹1.50/kWh, ₹10.00/kWh and ₹9.09/kWh respectively. The minimum, maximum and weighted average prices for the electricity transacted in the RTM of HPX were ₹10.00/kWh, ₹10.00/kWh and ₹10.00/kWh, respectively (Table-8). The weighted average price of electricity transacted in the TAM of IEX, PXIL and HPX was ₹6.86/kWh, ₹7.12/kWh and ₹8.73/kWh, respectively (Table-9, Table-10 and Table-11). The weighted average price of electricity transacted in the G-TAM of IEX, PXIL and HPX was ₹6.34/kWh, ₹5.46/kWh and ₹3.84/kWh, respectively (Table-12, Table-13 and Table-14). The weighted average price of electricity transacted in the HP-TAM of IEX and PXIL was ₹15.00/kWh and ₹16.85/kWh, respectively (Table-15 and Table-16). No electricity was transacted in HP-DAM of IEX; in DAM, G-DAM & HP-DAM of PXIL; and in DAM, G-DAM, HP-DAM & HP-TAM of HPX.

3.3. **DSM Charges:** The minimum, maximum and average charge under DSM was ₹0.50/kWh, ₹10.00/kWh and ₹4.56/kWh, respectively (Table-33).

3.4. The comparison of weighted average prices of electricity transacted through trading licensees and power exchanges (collective transactions) is shown in Figure-6. The daily prices of electricity transacted through various segments at power exchanges and their comparison are shown in Table-31(a), (b), (c) & (d) and Figure-7. The daily volume and charges under DSM are shown in Table-33.

4. Trading Margin

4.1. As per the CERC (Procedure, Terms and Conditions for grant of trading licence and other related matters) Regulations 2020, the trading licensees are allowed to charge a trading margin of not less than 0 paise/kWh and upto 7 paise/kWh. The weighted average trading margin charged by the trading licensees for bilateral transactions during the month was ₹0.016/kWh.

5. Volume of Short-term Transactions of Electricity (Regional Entity²-Wise)

5.1. Of the total bilateral transactions, the top 5 regional entities/states sold 33.08% of the volume. These were Madhya Pradesh, Rajasthan, Karnataka, Maharashtra and Himachal Pradesh. The HHI for sellers was 0.0357, which indicates non-concentration of market (Table-18). The top 5 regional entities/states purchased 73.22% of the volume, and these were Uttar Pradesh, Punjab, Haryana, West Bengal and Delhi. The HHI for buyers was 0.1288, which indicates non-concentration of market (Table-19).

5.2. Of the total DAM transactions at power exchanges, the top 5 regional entities/states sold 27.24% of the volume, and these were Karnataka, Nepal (NEA Muzaffarpur), Jindal India Thermal Power Limited, Odisha and Jindal Power Ltd Stage II. The HHI for sellers in DAM was 0.0280, which indicates non-concentration of market (Table-20). The top 5 regional entities/states purchased 71.88% of the volume, and these were Telangana, Gujarat, Andhra Pradesh, Maharashtra and Daman and Diu - Dadra and Nagar Haveli. The HHI for buyers in DAM was 0.2068, which indicates moderate concentration of market (Table-21).

5.3. Of the total G-DAM transactions at power exchanges, the top 5 regional entities/states sold 42.44% of the volume, and these were Karnataka, Adani Renewable Energy Holding Four Ltd., Himachal Pradesh, Adani Renewable Energy Forty One Ltd. (Infir) and Adani Green Energy Twenty Five B Ltd. (Infir). The HHI for sellers in G-DAM was 0.0554, which indicates non-concentration of market (Table-22). The top 5 regional entities/states purchased 67.88% of the volume, and these were Punjab, Arcelor Mittal Nippon Steel Hazira, Odisha, Maharashtra and Damodar Valley Corporation. The HHI for buyers in G-DAM was 0.1294, which indicates non-concentration of market (Table-23).

² In case of a State, the entities which are “selling” also include generators connected to State Grid and the entities which are “buying” also include open access consumers.

5.4. No volume was traded in HP-DAM of all three power exchanges.

5.5. Of the total RTM transactions at power exchanges, the top 5 regional entities/states sold 36.69% of the volume, and these were Bihar, Madhya Pradesh, Rajasthan, Tamil Nadu, and Jammu & Kashmir. The HHI for sellers in RTM was 0.0412, which indicates non-concentration of market (Table-26). The top 5 regional entities/states purchased 58.18% of the volume, and these were Telangana, Punjab, Uttar Pradesh, West Bengal and Andhra Pradesh. The HHI for buyers in RTM was 0.0961, which indicates non-concentration of market (Table-27).

5.6. The total volume of net transactions through power exchanges (Regional entity-wise), is shown in Table-28 & 32. The top 5 electricity selling regional entities/states of power exchange transactions were Karnataka, Madhya Pradesh, Rajasthan, Himachal Pradesh and Adani Power Limited-Raipur TPP. The top 5 electricity purchasing regional entities/states of power exchange transactions were Punjab, Uttar Pradesh, Telangana, West Bengal and Haryana.

5.7. Of the total under-drawal/ over-injection volume under DSM in August 2024, the top 5 regional entities/states accounted for 23.65% of the volume, and these were Kameng Hydro Electric Project, Rajasthan, Gujarat, Punjab and Maharashtra (Table-34). The top 5 regional entities/states under DSM accounted for 13.32% of the total over-drawal/ under-injection volume, and these were Uttar Pradesh, Tamil Nadu, Gujarat, West Bengal and Bihar (Table-35).

6. Congestion³ on Inter-State Transmission Corridor for Day-Ahead Market and Real Time Market on Power Exchanges

6.1. Power exchanges use a price discovery mechanism in which the aggregate demand and supply are matched to arrive at an unconstrained market price and volume. This process assumes that there is no congestion in the inter-State transmission system between different regions. However, in reality, the system operator (NLDC), in coordination with RLDCs,

³ “Congestion” means a situation where the demand for transmission capacity exceeds the available transfer capability

limits the flow (due to congestion) in the inter-State transmission system. In such a situation, power exchanges adopt a mechanism called “Market Splitting”⁴.

6.2. The volume of electricity that could not be cleared due to congestion & other reasons and could not be transacted through power exchanges is the difference between unconstrained cleared volume and actual cleared volume. During the month of August 2024, congestion was experienced in DAM, G-DAM & RTM of IEX, in RTM of PXIL and RTM of HPX.

6.3. The volume of electricity that could not be cleared due to congestion in DAM, G-DAM & RTM of IEX was 0.32%, 1.19% and 0.20% respectively, of the unconstrained cleared volume. The volume of electricity that could not be cleared due to congestion in RTM of HPX was 17.16% of the unconstrained cleared volume. While congestion occurred in few blocks in RTM of PXIL, there was no impact on the cleared volume. In terms of time, congestion occurred was 3.63% in DAM, 2.82% in G-DAM, 7.02% in RTM of IEX, 0.64% in PXIL and 0.47% in RTM of HPX during the month. (Table-29).

7. Volume and Price of Renewable Energy Certificates (RECs)

7.1. The concept of Renewable Energy Certificates (RECs) seeks to address the mismatch between the availability of renewable energy and the requirement of the obligated entities to meet their renewable purchase obligation by purchasing green attributes of renewable energy remotely located in the form of RECs. The REC mechanism is a market-based instrument to promote renewable sources of energy and the development of the electricity market.

7.2. One REC is equivalent to 1 MWh electricity injected into the grid from renewable energy sources. The REC is exchanged only in the power exchanges approved by CERC within the band of a floor price and forbearance (ceiling) price as notified by CERC from time to time. The first REC trading was held on power exchanges in May 2011.

⁴“Market Splitting” is a mechanism adopted by Power Exchanges, where the market is split in the event of transmission congestion, into predetermined (by NLDC) bid areas or zones, which are cleared individually at their respective area prices such that the energy balance in every bid area is reached based upon the demand and supply in individual bid areas and using the available transmission corridor capacity between various bid areas simultaneously. As a result of this market splitting the price of electricity in the importing region, where demand for electricity is more than supply, becomes relatively higher than the price of electricity in the exporting region.

7.3. The categorisation of RECs has been dispensed with on introduction of the concept of multiplier under the CERC (Terms and Conditions for Renewable Energy Certificates for Renewable Energy Generation) Regulations, 2022, brought into effect from 05.12.2022. Accordingly, the power exchanges deactivated the Solar and Non-Solar REC contract for trading w.e.f. December 2022. A new contract named “REC” has been made available for trading on the power exchanges. Further, RECs can also be exchanged through trading licensees as per the REC Regulations 2022.

7.4. The details of REC transactions for the month of August 2024 are shown in Table-36. The market clearing volume of RECs transacted on IEX, PXIL and HPX was 2115838, 1833622 and 118785, respectively. The weighted average market clearing price of these RECs was ₹116/MWh in IEX, ₹116/MWh in PXIL and ₹115/MWh in HPX.

7.5. The gap between the volume of buy and sell bids of RECs placed through power exchanges shows the variation in demand for the RECs. The ratio of buy bids to sell bids was 0.38, 0.78 and 0.04 in IEX, PXIL and HPX, respectively.

7.6. The volume of RECs transacted through Trading Licensees in August 2024 was 39814. The weighted average trade price for the RECs transacted through traders was ₹121/MWh.

8. Inferences:

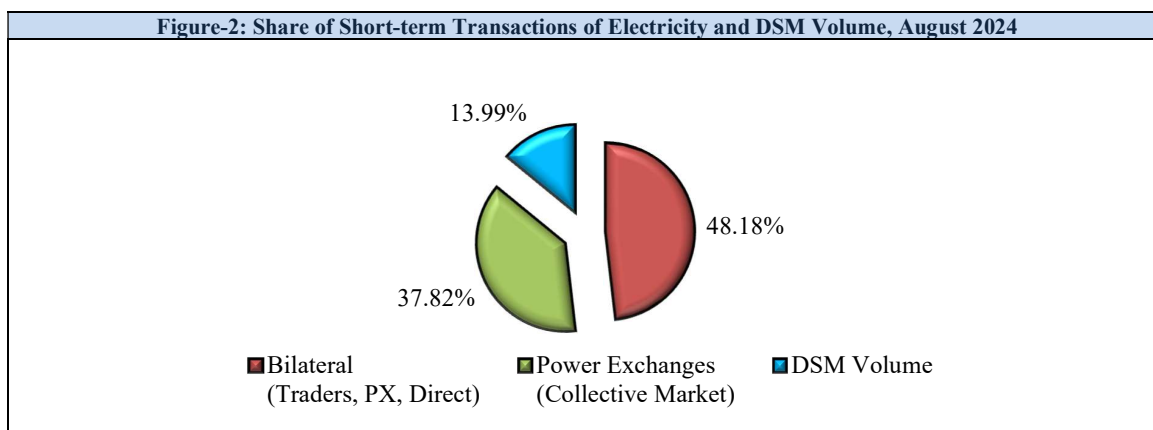
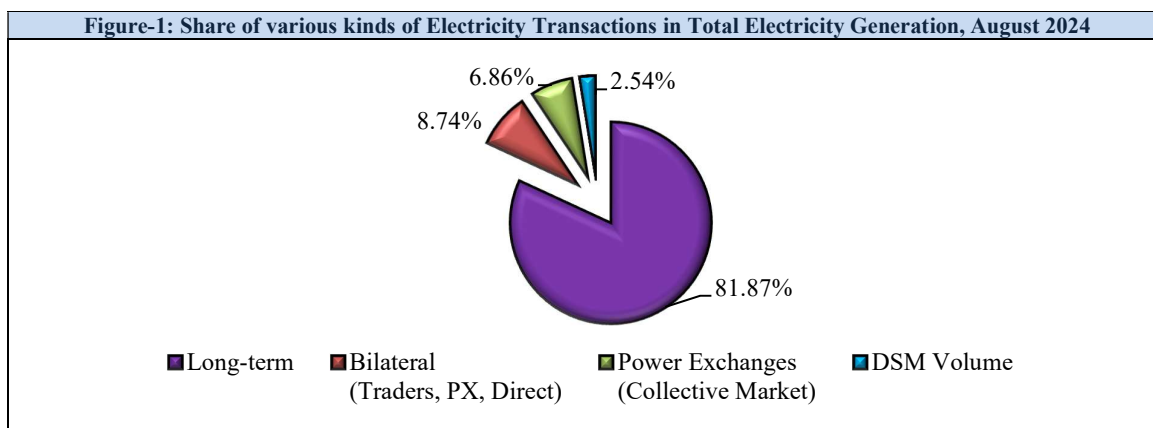
- a) The percentage of short-term transactions of electricity and DSM volume to total electricity generation was 18.13%.
- b) Of the total short-term transactions and DSM volume (23939.11 MU), 48.18% was transacted through bilateral (i.e. through Traders, Term-Ahead contracts on power exchanges and directly between entities), followed by 37.82% through power exchanges {DAM (including G-DAM & HP-DAM) and RTM}, and 13.99% through DSM.
- c) Of the total volume of electricity transacted through power exchanges, 49.50% of the volume was transacted in DAM (including G-DAM & HP-DAM), followed by 31.07% in RTM and 19.43% in Term Ahead Market (TAM) (including G-TAM & HP-TAM).

- d) The top 5 trading licensees had a share of 80.78% in the total volume traded by all the trading licensees.
- e) The Herfindahl Hirschman Index computed for the volume of electricity traded by trading licensees was 0.1669, indicating moderate concentration of market power.
- f) The weighted average sale price of electricity transacted through trading licensees was ₹6.70/kWh.
- g) The weighted average price of electricity transacted in DAM of IEX was ₹4.13/kWh, while no electricity was transacted in DAM of PXIL and HPX. The weighted average price of electricity transacted in G-DAM of IEX was ₹3.69/kWh, while no electricity was transacted in G-DAM of PXIL and HPX. No electricity was transacted in HP-DAM of all the three power exchanges. The weighted average price of electricity transacted in RTM of IEX, PXIL and HPX was ₹3.32/kWh, ₹9.09/kWh and ₹10.00/kWh, respectively.
- h) The weighted average price of electricity transacted in TAM of IEX, PXIL and HPX was ₹6.86/kWh, ₹7.12/kWh and ₹8.73/kWh, respectively. The weighted average price of electricity transacted in G-TAM of IEX, PXIL and HPX was ₹6.34/kWh, ₹5.46/kWh and ₹3.84/kWh, respectively. The weighted average price of electricity transacted in HP-TAM of IEX and PXIL was ₹15.00/kWh and ₹16.85/kWh, respectively.
- i) The average charge under DSM was ₹4.56/kWh.
- j) The weighted average trading margin charged by the trading licensees for bilateral transactions was ₹0.016/kWh.
- k) The top 5 electricity selling regional entities/states of power exchange transactions were Karnataka, Madhya Pradesh, Rajasthan, Himachal Pradesh and Adani Power Limited-Raipur TPP. The top 5 electricity purchasing regional entities/states of power exchange transactions were Punjab, Uttar Pradesh, Telangana, West Bengal and Haryana.
- l) The top 5 under-drawing/ over-injecting regional entities/states under DSM were Kameng Hydro Electric Project, Rajasthan, Gujarat, Punjab and Maharashtra. The top 5 over-drawing/ under-injecting regional entities/states under DSM were Uttar Pradesh, Tamil Nadu, Gujarat, West Bengal and Bihar.

- m) During the month of August 2024, congestion was experienced in DAM, G-DAM & RTM of IEX, in RTM of PXIL, and in RTM of HPX. The volume of electricity that could not be cleared due to congestion in DAM, G-DAM & RTM of IEX was 0.32%, 1.19% and 0.20% respectively, of the unconstrained cleared volume. The volume of electricity that could not be cleared due to congestion in RTM of HPX was 17.16% of the unconstrained cleared volume. While congestion occurred in few blocks in RTM of PXIL, there was no impact on the cleared volume.
- n) The market clearing volume of RECs transacted on IEX, PXIL and HPX was 2115838, 1833622 and 118785, respectively. The weighted average market clearing price of these RECs was ₹116/MWh in IEX, ₹116/MWh in PXIL and ₹115/MWh in HPX. The volume of RECs transacted through Trading Licensees in August 2024 was 39814. The weighted average trade price for the RECs transacted through traders was ₹121/MWh.

Table-1: VOLUME OF SHORT-TERM TRANSACTIONS OF ELECTRICITY AND DSM (ALL INDIA), AUGUST 2024				
Sr. No	Transaction	Volume (MU)	% to short-term transactions and DSM Volume	% to Total Generation
A	Short-term transactions			
1	Bilateral ⁵ (Traders, PX, Direct)	11534.33	48.18	8.74
2	Power Exchanges (Collective Market)	9054.75	37.82	6.86
	(i) IEX			
	(a) DAM	4711.98	19.68	3.57
	(b) RTM	3484.86	14.56	2.64
	(c) GDAM	851.47	3.56	0.64
	(d) HP-DAM	0.00	0.00	0.00
	(ii) PXIL			
	(a) DAM	0.00	0.00	0.00
	(b) RTM	4.70	0.02	0.004
	(c) GDAM	0.00	0.00	0.00
	(d) HP-DAM	0.00	0.00	0.00
	(ii) HPX			
	(a) DAM	0.00	0.00	0.00
	(b) RTM	1.76	0.01	0.001
	(c) GDAM	0.00	0.00	0.00
	(d) HP-DAM	0.00	0.00	0.00
B	Through DSM	3350.04	13.99	2.54
Total Short-term transactions and DSM		23939.11	-	18.13
Total Generation		132023.46 (P)	-	-

Source: NLDC



⁵ includes bilateral short-term transactions under GNA and T-GNA

Figure-3: Share of volume transacted in different markets segments on Power Exchanges, August 2024

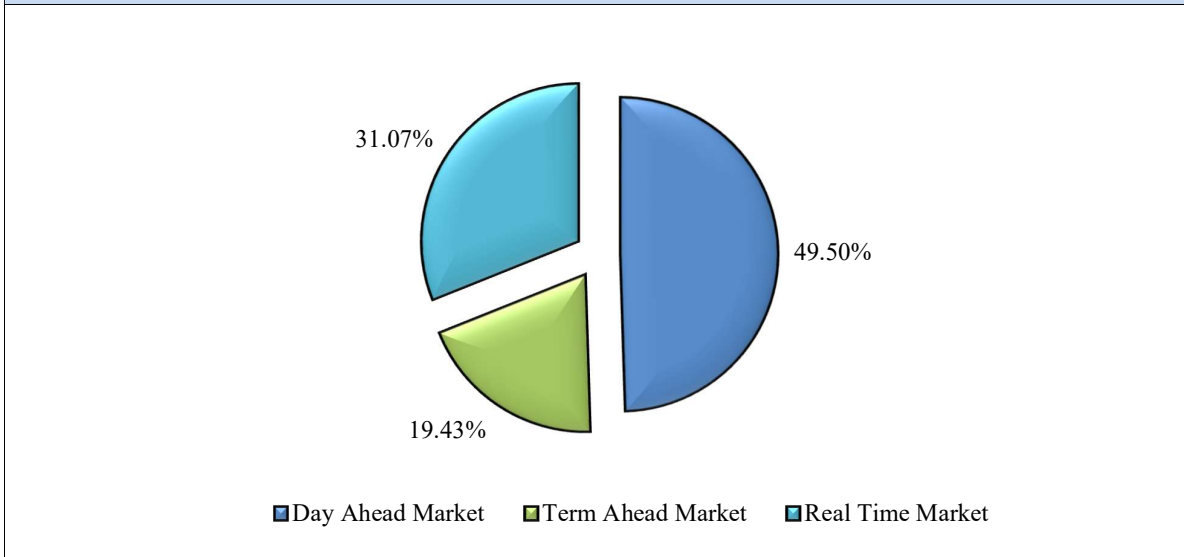


Figure-4: Volume of Short-term transactions and DSM Volume, August 2024 (Day-wise)

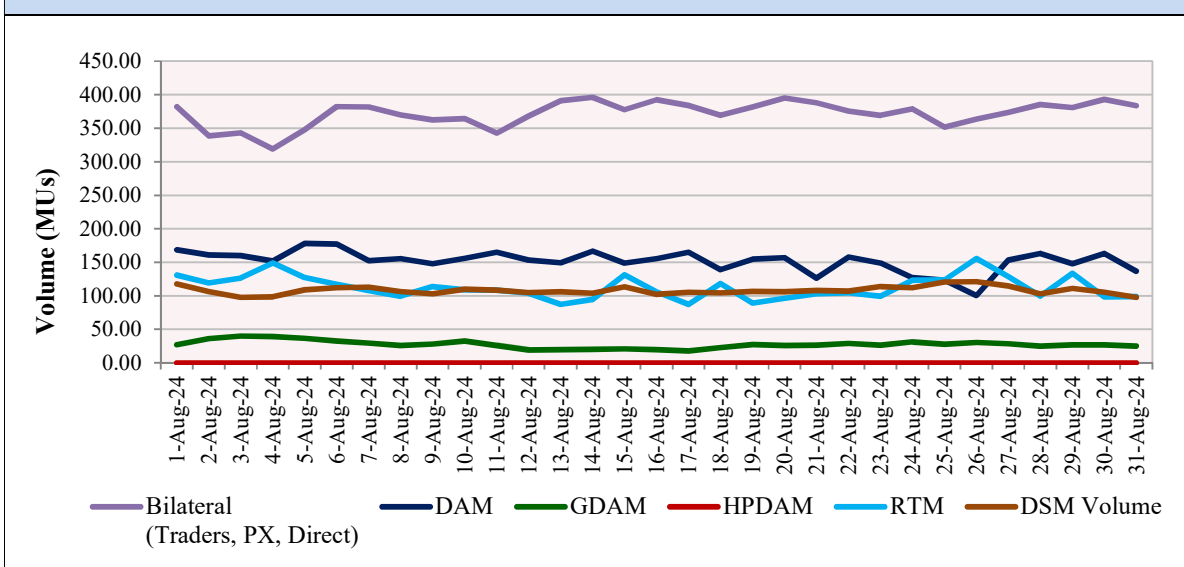


Table-2: PERCENTAGE SHARE OF ELECTRICITY TRANSACTED BY TRADING LICENSEES, AUGUST 2024		
Sr. No	Name of the Trading Licensee	% Share in total Volume traded by Trading Licensees
1	PTC India Ltd.	30.75
2	NTPC Vidyut Vyapar Nigam Ltd.	16.53
3	Adani Enterprises Ltd.	14.40
4	Tata Power Trading Company (P) Ltd.	12.38
5	Manikaran Power Ltd.	6.72
6	Arunachal Pradesh Power Corporation (P) Ltd	4.62
7	JSW Power Trading Company Ltd	3.14
8	GMR Energy Trading Ltd.	2.72
9	Kundan International Pvt. Ltd.	1.25
10	Instinct Infra & Power Ltd.	1.02
11	Greenko Energies Pvt Ltd	0.91
12	Kreate Energy (I) Pvt. Ltd.	0.74
13	Ambitious Power Trading Company Ltd.	0.64
14	Statkraft Markets Pvt. Ltd.	0.56
15	RPG Power Trading Company Ltd.	0.53
16	Energysedge Power Trading Pvt. Ltd.	0.41
17	Shree Cement Ltd.	0.40
18	Ideal Energy Solution Pvt. Ltd.	0.38
19	Instant Ventures Pvt. Ltd.	0.22
20	Abja Power Private Limited	0.21
21	Refex Industries Ltd.	0.21
22	Saranyu Power Trading Private Limited	0.21
23	Adarsh Stainless Pvt. Ltd.	0.19
24	Refex Energy Limited	0.19
25	NLC India Ltd.	0.17
26	SJVN Ltd.	0.09
27	Powerfull Energy Trading Pvt. Ltd.	0.08
28	Gita Power & Infrastructure Private Limited	0.06
29	Elsa Consultancy	0.05
30	NEFA Power Trading Pvt. Ltd.	0.03
31	Customized Energy Solutions India (P) Ltd.	0.03
32	Altilium Energie Private Limited	0.03
33	EKI Power Trading Pvt. Ltd.	0.03
34	Phillip Commodities India (P) Ltd.	0.03
35	Shubheksha Advisors Pvt. Ltd.	0.02
36	Saini Power Transactor	0.02
37	REL Power Trading LLP	0.02
38	Shell Energy Marketing and Trading India Pvt. Ltd.	0.01
39	Renesys Solar Pvt. Ltd.	0.001
TOTAL		100.00%
Top 5 trading licensees		80.78%
Herfindahl-Hirschman Index (HHI)		0.1669
<i>Note 1: Volume of electricity transacted by the trading licensees includes bilateral transactions (inter-state & intra-state) and the transactions undertaken through power exchanges.</i>		
<i>Source: Information submitted by trading licensees</i>		

Figure 5: Percentage Share of Electricity Transacted by Trading Licensees, August 2024

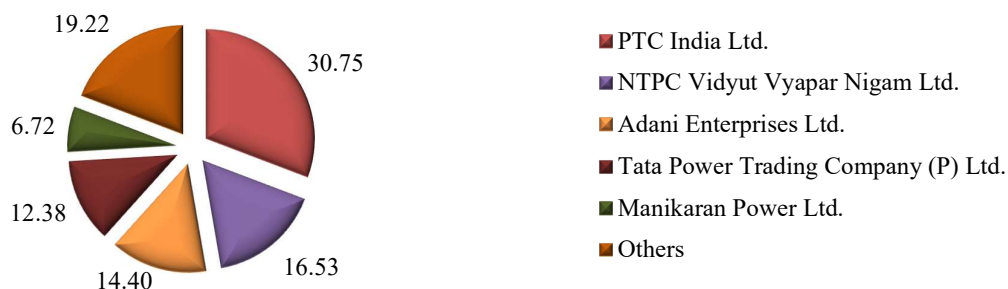


Table-3: PRICE OF ELECTRICITY TRANSACTED THROUGH TRADERS, AUGUST 2024		
Sr.No	Item	Sale Price of Traders (₹/kWh)
1	Minimum	1.41
2	Maximum	10.00
3	Weighted Average	6.70

Source: Information submitted by trading licensees

Table-4: PRICE OF ELECTRICITY TRANSACTED THROUGH TRADERS (TIME-WISE), AUGUST 2024		
Sr.No	Period of Trade	Sale Price of Traders (₹/kWh)
1	RTC	6.69
2	PEAK	9.06
3	OFF PEAK	5.86

Source: Information submitted by trading licensees

Table-5: PRICE OF ELECTRICITY TRANSACTED IN DAY AHEAD MARKET, AUGUST 2024				
Sr.No	ACP	Price in IEX (₹/kWh)	Price in PXIL (₹/kWh)	Price in HPX (₹/kWh)
1	Minimum	0.30	-	-
2	Maximum	10.00	-	-
3	Weighted Average	4.13	-	-

Source: IEX, PXIL and HPX

Table-6: PRICE OF ELECTRICITY TRANSACTED IN GREEN DAY AHEAD MARKET, AUGUST 2024				
Sr.No	ACP	Price in IEX (₹/kWh)	Price in PXIL (₹/kWh)	Price in HPX (₹/kWh)
1	Minimum	1.30	-	-
2	Maximum	10.00	-	-
3	Weighted Average	3.69	-	-

Source: IEX, PXIL and HPX

Table-7: PRICE OF ELECTRICITY TRANSACTED IN HIGH PRICE DAY AHEAD MARKET, AUGUST 2024				
Sr.No	ACP	Price in IEX (₹/kWh)	Price in PXIL (₹/kWh)	Price in HPX (₹/kWh)
1	Minimum	-	-	-
2	Maximum	-	-	-
3	Weighted Average	-	-	-

Source: IEX, PXIL and HPX

Table-8: PRICE OF ELECTRICITY TRANSACTED IN REAL TIME MARKET, AUGUST 2024				
Sr.No	ACP	Price in IEX (₹/kWh)	Price in PXIL (₹/kWh)	Price in HPX (₹/kWh)
1	Minimum	0.20	1.50	10.00
2	Maximum	10.00	10.00	10.00
3	Weighted Average	3.32	9.09	10.00

Source: IEX, PXIL and HPX

Table-9: VOLUME AND PRICE OF ELECTRICITY IN TERM AHEAD MARKET OF IEX, AUGUST 2024			
Sr.No	Term ahead contracts	Actual Scheduled Volume (MU)	Weighted Average Price (₹/kWh)
1	Intra-Day Contracts	9.70	9.66
2	Day Ahead Contingency Contracts	229.74	7.38
3	Daily Contracts	403.72	6.53
4	Weekly Contracts	0.36	5.70
5	Monthly Contracts	73.96	5.90
6	Any Day Single Sided Contracts	168.36	7.20
	Total	885.84	6.86

Source: IEX

Table-10: VOLUME AND PRICE OF ELECTRICITY IN TERM AHEAD MARKET OF PXIL, AUGUST 2024			
Sr.No	Term ahead contracts	Actual Scheduled Volume (MU)	Weighted Average Price (₹/kWh)
1	Intra-Day Contracts	25.92	9.71
2	Day Ahead Contingency Contracts	286.68	7.25
3	Daily Contracts	260.37	7.18
4	Weekly Contracts	8.90	5.70
5	Monthly Contracts	74.11	5.90
6	Any Day Single Sided Contracts	120.25	7.03
	Total	776.23	7.12

Source: PXIL

Table-11: VOLUME AND PRICE OF ELECTRICITY IN TERM AHEAD MARKET OF HPX, AUGUST 2024			
Sr.No	Term ahead contracts	Actual Scheduled Volume (MU)	Weighted Average Price (₹/kWh)
1	Intra-Day Contracts	7.70	9.95
2	Day Ahead Contingency Contracts	224.24	8.53
3	Daily Contracts	95.65	9.29
4	Any Day Single Sided Contracts	24.15	8.09
	Total	351.74	8.73

Source: HPX

Table-12: VOLUME AND PRICE OF ELECTRICITY IN GREEN TAM OF IEX, AUGUST 2024			
Sr. No	Green Term ahead contracts	Actual Scheduled Volume (MU)	Weighted Average Price (₹/kWh)
1	Day Ahead Contingency Contracts	6.55	7.85
2	Daily Contracts	15.14	5.69
	Total	21.70	6.34

Source: IEX

Table-13: VOLUME AND PRICE OF ELECTRICITY IN GREEN TAM OF PXIL, AUGUST 2024			
Sr. No	Green Term ahead contracts	Actual Scheduled Volume (MU)	Weighted Average Price (₹/kWh)
1	Day Ahead Contingency Contracts	13.93	4.71
2	Daily Contracts	14.35	5.60
3	Any Day Single Sided Contracts	13.70	6.07
	Total	41.98	5.46

Source: PXIL

Table-14: VOLUME AND PRICE OF ELECTRICITY IN GREEN TAM OF HPX, AUGUST 2024			
Sr. No	Green Term ahead contracts	Actual Scheduled Volume (MU)	Weighted Average Price (₹/kWh)
1	Day Ahead Contingency Contracts	80.04	3.91
2	Daily Contracts	11.60	3.34
	Total	91.64	3.84

Source: HPX

Table-15: VOLUME AND PRICE OF ELECTRICITY IN HIGH PRICE TAM OF IEX, AUGUST 2024			
Sr. No	High Price Term ahead contracts	Actual Scheduled Volume (MU)	Weighted Average Price (₹/kWh)
1	Intra-Day Contracts	6.78	15.00
	Total	6.78	15.00

Source: IEX

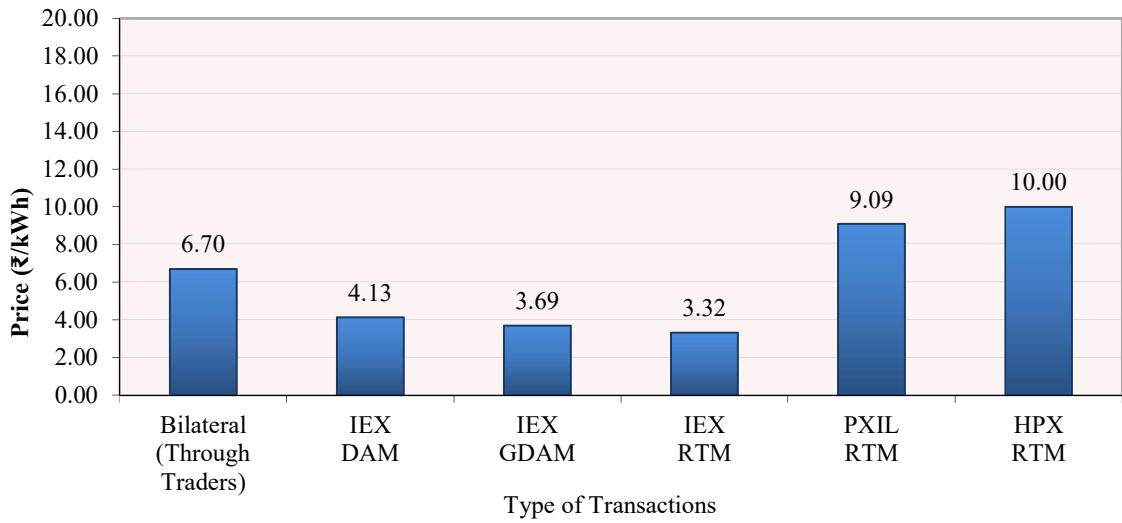
Table-16: VOLUME AND PRICE OF ELECTRICITY IN HIGH PRICE TAM OF PXIL, AUGUST 2024			
Sr. No	High Price Term ahead contracts	Actual Scheduled Volume (MU)	Weighted Average Price (₹/kWh)
1	Intra-Day Contracts	6.16	17.36
2	Day Ahead Contingency Contracts	1.70	15.00
	Total	7.86	16.85

Source: PXIL

Table-17: VOLUME AND PRICE OF ELECTRICITY IN HIGH PRICE TAM OF HPX, AUGUST 2024			
Sr. No	High Price Term ahead contracts	Actual Scheduled Volume (MU)	Weighted Average Price (₹/kWh)
	No trade	0.00	-
	Total	0.00	-

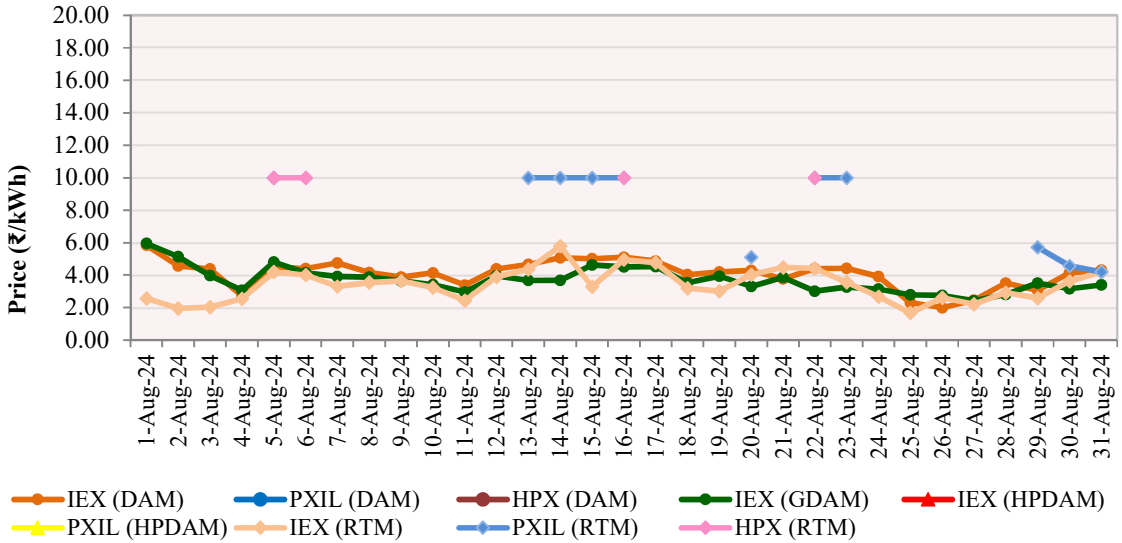
Source: HPX

Figure-6: Weighted Average Price of Short-term Transactions of Electricity, August 2024



Note: No electricity was transacted in DAM of PXIL & HPX, G-DAM of PXIL & HPX, and in HP-DAM of all power exchanges during August 2024

Figure-7: Weighted Average Price of Short-term Transactions of Electricity, August 2024 (Day-wise)



Note: No electricity was transacted in DAM of PXIL & HPX, G-DAM of PXIL & HPX, and in HP-DAM of all power exchanges during August 2024

Table-18: VOLUME OF ELECTRICITY SOLD THROUGH BILATERAL, AUGUST 2024		
Name of the Entity	Volume of Sale (MUs)	% of Volume
Madhya Pradesh	971.25	8.42
RAJASTHAN	967.78	8.39
KARNATAKA	830.62	7.20
MAHARASHTRA	615.93	5.34
HIMACHAL PRADESH	429.75	3.73
Adani Power Limited-Raipur TPP	429.15	3.72
Jindal Power Limited, Stage-2	387.93	3.36
GUJARAT	350.58	3.04
Jindal Power Limited, Stage-1	337.41	2.93
KERALA	318.48	2.76
Adani Power Limited - Raigarh TPP	304.78	2.64
SIMHAPURI ENERGY LIMITED	294.61	2.55
IGSTPS JHAJJAR	267.15	2.32
TELANGANA	259.18	2.25
MAHAN ENERGEN LIMITED U#2	258.66	2.24
R.K.M POWERGEN PRIVATE LIMITED	235.00	2.04
TAMIL NADU	223.20	1.94
NABINAGAR POWER GENERATING COMPANY LIMITED	212.20	1.84
IL&FS TAMIL NADU POWER COMPANY LIMITED	212.02	1.84
DELHI	199.44	1.73
MB POWER (MADHYA PRADESH) LIMITED	186.85	1.62
NTPC Telangana	184.76	1.60
Jaypee Nigrie Super Thermal Power Plant	161.33	1.40
COASTAL ENERGEN PRIVATE LIMITED	154.73	1.34
SKS Power Generation Chhattisgarh Limited	150.61	1.31
UTTARAKHAND	148.78	1.29
KAMENG HYDRO POWER STATION	125.95	1.09
UTTAR PRADESH	114.41	0.99
SEIL ENERGY INDIA LIMITED	108.59	0.94
SEIL Energy India Limited Project II	106.76	0.93
MAHAN ENERGEN LIMITED U#1	106.21	0.92
IND BARATH ENERGY UTKAL LIMITED	105.40	0.91
Jindal India Thermal Power Limited	93.42	0.81
NTPC BARH Stage II	87.90	0.76
ODISHA	84.85	0.74
NTPC North Karanpura STPS	81.68	0.71
WEST BENGAL	77.54	0.67
SHREE CEMENT LIMITED TPS	70.65	0.61
MEGHALAYA	70.36	0.61
D B Power Limited	64.38	0.56
SEMBCORP ENERGY INDIA LIMITED	58.93	0.51
NTPC Talcher Stage I	56.31	0.49
Sorang HEP (Himachal Sorang Power Pvt. Ltd.))	54.66	0.47
ACB (INDIA) LIMITED	52.01	0.45
DGEN MEGA POWER PROJECT	48.14	0.42
Jhabua Power Limited	47.50	0.41
CHHATTISGARH	45.82	0.40
SIKKIM	41.20	0.36
Serentica Renewables India 4 Private Limited	40.07	0.35
NTPC Singrauli	38.58	0.33
KANTI BIJLEE UTPADAN NIGAM LIMITED	33.59	0.29
Damodar Valley Corporation	32.35	0.28
MANIPUR	29.70	0.26
ANDHRA PRADESH	28.80	0.25
TPSL 200MW TPTCL Banderwala	27.84	0.24

Jammu Kashmir	26.14	0.23
DHARIWAL STU OTH	25.13	0.22
ADANI RENEWABLE ENERGY HOLDING FOUR LIMITED	25.11	0.22
KARCHAM WANGTOO HYDRO ELECTRIC PLANT.	20.32	0.18
Dhariwal ISTS	20.09	0.17
ADANI WIND ENERGY KUTCHH FOUR Ltd. Nakhatrana	19.68	0.17
RENEW SURYA ROSHNI PRIVATE LIMITED Koppal PS	19.24	0.17
NTPC Rihand stage I	18.93	0.16
NTPC Darlipali	18.75	0.16
Amplus Ages Private Limited	18.11	0.16
RENEW SURYA ROSHNI PRIVATE LIMITED-Fatehgarh-III PS	17.42	0.15
Maruti Clean Coal and Power Limited	16.20	0.14
TPSL Banderwala SECI 100 INF	15.42	0.13
Serentica Renewables India 1 Private Limited	15.38	0.13
NTPC Rihand stage III	15.09	0.13
NTPC Rihand stage II	15.00	0.13
ADANI RENEWABLE ENERGY FORTY ONE LIMITED infirm	14.60	0.13
AD HYDRO POWER LIMITED	13.95	0.12
ReNew Surya Ravi Private Limited	13.94	0.12
Transition Sustainable Energy Services Private Limited	13.48	0.12
Onevolt Energy Private Limited	12.97	0.11
Palatana Plant	11.16	0.10
Ramagundam Floating solar	10.24	0.09
ARUNACHAL PRADESH	10.12	0.09
Jindal Steel & Power Ltd , DCP	9.60	0.08
TRN ENERGY PRIVATE LIMITED	9.22	0.08
IRCON RENEWABLE POWER LIMITED Infirm	8.11	0.07
HARYANA	7.44	0.06
Ratnagiri Gas and Power Private Limited-LTRLNG	7.00	0.06
Goa WR	6.98	0.06
MEENAKSHI ENERGY LIMITED	6.84	0.06
Singoli Bhatwari HEP	6.79	0.06
Transition Energy Services Private Limited	5.39	0.05
Ratnagiri Gas & Power Private Limited	5.02	0.04
NEA Likhu-2 Hydropower Project	4.89	0.04
PUNJAB	4.11	0.04
Adani Green Energy Twenty Five B Limited infirm	2.83	0.02
NAGALAND	2.25	0.02
ADANI SOLAR ENERGY JODHPUR TWO LIMITED	1.72	0.01
WIND FIVE RENERGY LIMITED	1.61	0.01
NTPC SOLAPUR SOLAR PV Station	1.54	0.01
OSTRO KANNADA POWER PRIVATE LIMITED	1.43	0.01
Grian Energy Private Limited	0.90	0.01
Sembcorp Energy India Limited Project II	0.85	0.01
NTPC DADRI GPS RLNG	0.82	0.01
Bongaigaon Thermal Power Station NTPC	0.72	0.01
NTPC AURAIYA GPS RLNG	0.61	0.01
NTPC Kawas GPS COMGAS	0.54	0.005
NTPC Kahalgaon stage II	0.48	0.004
CHAMERA I POWER STATION	0.45	0.004
NTPC Jhanor Gandhar GPS COMGAS	0.44	0.004
ADANI RENEWABLE ENERGY FIFTY FIVE LIMITED Infirm	0.44	0.004
ADANI WIND ENERGY KUTCHH FOUR Ltd. Nakhatrana (infirm)	0.44	0.004
NTPC ANTA GPS RLNG	0.43	0.004
ASSAM GAS BASED POWER STATION	0.39	0.003
NTPC Unchahar Stage II	0.33	0.003
Tashiding HEP, Shiga Energy Private Limited	0.33	0.003

NTPC Unchahar Stage III	0.21	0.002
CONTINUUM POWER TRADING (TN) PRIVATE LIMITED	0.20	0.002
Nani Virani Wind Energy Private Limited	0.15	0.001
AGARTALA GAS BASED POWER STATION	0.14	0.001
Adani Green Energy Twenty Five A Limited Infirm	0.13	0.001
Adani Green Energy Twenty Six B Limited infirm	0.12	0.001
NTPC Gadarwara	0.06	0.001
JORETHANG LOOP HEP, DANS ENERGY PRIVATE LIMITED	0.05	0.0005
Chuzachen HEP	0.05	0.0004
NTPC Dadri Stage II	0.03	0.0003
NTPC Tanda Stage II	0.02	0.0002
Total	11534.33	100.00
Volume Sold by top 5 Regional Entities	3815.34	33.08
Herfindahl-Hirschman Index		0.0357

Source: NLDC

Table-19: VOLUME OF ELECTRICITY PURCHASED THROUGH BILATERAL, AUGUST 2024		
Name of the Entity	Volume of Purchase (MUs)	% of Volume
UTTAR PRADESH	2481.94	21.52
PUNJAB	2083.03	18.06
HARYANA	1468.63	12.73
WEST BENGAL	1248.96	10.83
DELHI	1163.00	10.08
BIHAR	1024.14	8.88
TAMIL NADU	556.55	4.83
ANDHRA PRADESH	223.34	1.94
MAHARASHTRA	189.43	1.64
CHHATTISGARH	183.41	1.59
GUJARAT	160.16	1.39
UTTARAKHAND	147.54	1.28
ODISHA	119.80	1.04
RAJASTHAN	105.62	0.92
ASSAM	97.64	0.85
Damodar Valley Corporation	74.40	0.65
ArcelorMittal Nippon Steel India Limited	69.47	0.60
JHARKHAND	24.33	0.21
HIMACHAL PRADESH	15.81	0.14
Goa WR	14.29	0.12
Adani Power Limited-Raipur TPP	14.19	0.12
TELANGANA	13.76	0.12
KERALA	11.80	0.10
KARNATAKA	10.93	0.09
Chandigarh (UT)	9.03	0.08
Madhya Pradesh	7.44	0.06
Jindal Power Limited, Stage-2	4.01	0.03
MEGHALAYA	3.70	0.03
BHARAT ALUMINIUM COMPANY LTD (Bulk Consumer)	2.61	0.02
Jhabua Power Limited	1.88	0.02
Adani Power Limited - Raigarh TPP	1.64	0.01
MAHAN ENERGEN LIMITED U#2	0.71	0.01
SIKKIM	0.43	0.004
Goa SR	0.36	0.003
MAHAN ENERGEN LIMITED U#1	0.35	0.003
TOTAL	11534.33	100.00
Volume Purchased by top 5 Regional Entities	8445.56	73.22
Herfindahl-Hirschman Index		0.1288

Source: NLDC

Table-20: VOLUME OF ELECTRICITY SOLD IN DAY AHEAD MARKET THROUGH POWER EXCHANGES, AUGUST 2024		
Name of the Entity	Volume of Sale (MUs)	% of Volume
Karnataka	366.16	7.77
NEPAL ELECTRICITY AUTHORITY MUZAFFARPUR	356.49	7.57
Jindal India Thermal Power Limited	202.45	4.30
Odisha	184.45	3.91
Jindal Power Limited, Stage-2	174.09	3.69
Uttar Pradesh	159.33	3.38
Chhattisgarh	148.09	3.14
MAHAN ENERGEN LIMITED U#1	145.46	3.09
Delhi	145.08	3.08
Adani Power Limited-Raipur TPP	138.45	2.94
Madhya Pradesh	135.33	2.87
D B Power Limited	129.78	2.75
KARCHAM WANGTOO HYDRO ELECTRIC PLANT.	120.00	2.55
Jindal Power Limited, Stage-1	98.38	2.09
Rajasthan	87.84	1.86
AD HYDRO POWER LIMITED	81.27	1.72
Jaypee Nigrie Super Thermal Power Plant	74.20	1.57
Assam	72.96	1.55
Himachal Pradesh	70.34	1.49
Adani Power Limited - Raigarh TPP	65.78	1.40
Tamil Nadu	65.11	1.38
Haryana	64.61	1.37
SKS Power Generation Chhattisgarh Limited	56.03	1.19
Gujarat	52.17	1.11
SEIL ENERGY INDIA LIMITED	46.41	0.98
Andhra Pradesh	45.73	0.97
Sainj HEP	44.18	0.94
ADANI WIND ENERGY KUTCHH FOUR Ltd. Nakhatrana	43.80	0.93
SHREE CEMENT LIMITED TPS	42.83	0.91
NEPAL ELECTRICITY AUTHORITY TANAKPUR	42.72	0.91
ACB (INDIA) LIMITED	42.31	0.90
Jindal Steel & Power Ltd , DCPP	41.75	0.89
NABINAGAR POWER GENERATING COMPANY LIMITED	38.86	0.82
Maharashtra	38.43	0.82
IL&FS TAMIL NADU POWER COMPANY LIMITED	38.42	0.82
West Bengal	37.58	0.80
Basochhu Hydropower Plant Bhutan	34.51	0.73
RENEW SURYA PRATAP PRIVATE LIMITED	32.29	0.69
Government of Himachal Pradesh NJHPS	30.65	0.65
Government of Himachal Pradesh RampurHEP	30.54	0.65
IND BARATH ENERGY UTKAL LIMITED	30.04	0.64
Government of Himachal Pradesh Chamera I HEP	28.47	0.60
RENEW SURYA OJAS PRIVATE LIMITED-Wind	28.31	0.60
ADANI RENEWABLE ENERGY HOLDING FOUR LIMITED	27.43	0.58
Damodar Valley Corporation	25.78	0.55
NTPC North Karanpura STPS	24.62	0.52
ReNew Surya Ravi Private Limited	24.54	0.52
Adept Renewable Technologies Private Limited	23.77	0.50
Bihar	23.61	0.50
Mizoram	23.45	0.50
NTPC Farakka stage I	22.11	0.47
Chandigarh (UT)	21.25	0.45
Adani Green Energy Twenty Five B Limited infirm	20.65	0.44
Nikachhu Hydropower Project	20.52	0.44

ADANI SOLAR ENERGY JAISALMER TWO PRIVATE LIMITED(Project-2)	20.20	0.43
Government of Himachal Pradesh CHAMERA2HEP	18.81	0.40
Singoli Bhatwari HEP	18.34	0.39
NTPC Talcher Stage I	17.36	0.37
Amp Energy Green Six Private Limited	17.07	0.36
Government of Himachal Pradesh Koldam HEP	16.83	0.36
Kerala	16.64	0.35
Government of Himachal Pradesh Chamera3HEP	15.70	0.33
NTPC BARH Stage II	14.93	0.32
SIMHAPURI ENERGY LIMITED	14.05	0.30
Punjab	14.04	0.30
The Tata Power Co Ltd (MTPS)	13.22	0.28
MAHAN ENERGEN LIMITED U#2	12.79	0.27
Jhabua Power Limited	12.03	0.26
KANTI BIJLEE UTPADAN NIGAM LIMITED	11.70	0.25
Telangana	11.58	0.25
Government of Himachal Pradesh Parbati3HEP	10.89	0.23
NTPC Sipat Stage I	10.51	0.22
OSTRO KANNADA POWER PRIVATE LIMITED	10.05	0.21
Sorang HEP (Himachal Sorang Power Pvt. Ltd.)	9.77	0.21
NTPC Korba Stage I &II	8.73	0.19
ADANI RENEWABLE ENERGY FORTY ONE LIMITED_infirm	8.55	0.18
Jharkhand	8.14	0.17
Budhil HEP (Greenko Budhil Hydro Power Pvt. Ltd.)	8.10	0.17
Goa WR	7.74	0.16
Government of Himachal Pradesh BairasuilHEP	7.40	0.16
NTPP BRBCL	7.36	0.16
ADANI SOLAR ENERGY RJ TWO PRIVATE LIMITED	7.29	0.15
NTPC Farakka stage III	6.97	0.15
SEIL Energy India Limited Project II	6.68	0.14
NTPC Lara Stage I	6.34	0.13
ADANI SOLAR ENERGY JODHPUR TWO LIMITED	6.18	0.13
NTPC Sipat Stage II	6.15	0.13
Bongaigaon Thermal Power Station NTPC	6.12	0.13
NTPC Vindhyachal Stage II	5.89	0.12
Sikkim	5.72	0.12
Onevolt Energy Private Limited	5.62	0.12
Maruti Clean Coal and Power Limited	5.56	0.12
NTPC Vindhyachal Stage IV	5.48	0.12
WIND FIVE RENERGY LIMITED	5.31	0.11
DGEN MEGA POWER PROJECT	4.95	0.11
R.K.M POWERGEN PRIVATE LIMITED	4.91	0.10
NTPC Kahalgaon stage I	4.82	0.10
NTPC Kahalgaon stage II	4.68	0.10
Tripura	4.62	0.10
Adani Green Energy Twenty Six B Limited infirm	4.61	0.10
Nagaland	4.39	0.09
ADANI RENEWABLE ENERGY FIFTY FIVE LIMITED_Infirm	4.31	0.09
COASTAL ENERGEN PRIVATE LIMITED	4.05	0.09
NTPC Vindhyachal Stage III	4.01	0.09
GMR Warora Energy Limited	3.95	0.08
NTPC Vindhyachal Stage I	3.78	0.08
Adani Green Energy Twenty Five A Limited Infirm	3.65	0.08
Jammu Kashmir	3.46	0.07
Pondicherry UT	3.43	0.07
NTPC Korba Stage III	3.25	0.07

Uttarakhand	2.88	0.06
Transition Energy Services Private Limited	2.49	0.05
NTPC Unchahar Stage IV	2.38	0.05
IGSTPS JHAJJAR	2.32	0.05
NTPC khargone	2.19	0.05
Ramagundam Floating solar	2.17	0.05
TPSL 200MW TPTCL Banderwala	2.16	0.05
NTPC Talcher Super Thermal Power Station Stage II	2.10	0.04
Palatana Plant	2.07	0.04
NTPC BARH Stage I	1.92	0.04
NTPC Tanda Stage II	1.92	0.04
NTPC Mouda Stage II	1.68	0.04
NTPC Unchahar Stage II	1.67	0.04
NTPC Telangana	1.65	0.04
NTPC Vindhyachal Stage V	1.59	0.03
NTPC Gadarwara	1.53	0.03
RENEW SURYA OJAS PRIVATE LIMITED INFIRM	1.49	0.03
ADANI WIND ENERGY KUTCHH FOUR Ltd. Nakhatrana (infirm)	1.45	0.03
NTPC Rihand stage I	1.45	0.03
Arunachal Pradesh	1.45	0.03
Simhadri FSP 15 MW	1.30	0.03
Meghalaya	1.15	0.02
NTPC Solapur	1.12	0.02
NTPC Rihand stage III	0.97	0.02
NTPC Unchahar Stage I	0.91	0.02
NTPC Dadri Stage II	0.88	0.02
NTPC Mouda Stage I	0.84	0.02
Simhadri Floating solar (10 MW)	0.80	0.02
NTPC Rihand stage II	0.75	0.02
ADANI SOLAR ENERGY RJ TWO PRIVATE LIMITED (infirm)	0.68	0.01
GMR KAMALANGA ENERGY LTD-CTU	0.67	0.01
DHARIWAL STU OTH	0.66	0.01
NTPC Simhadri Stage II	0.60	0.01
Dhariwal ISTS	0.52	0.01
NTPC Unchahar Stage III	0.50	0.01
MB POWER (MADHYA PRADESH) LIMITED	0.48	0.01
NTPC Darlipali	0.42	0.01
TPSL Banderwala SECI 100 INF	0.36	0.01
NTPC Singrauli	0.30	0.01
NLC INDIA LIMITED THERMAL POWER STATION I EXPANSION	0.21	0.005
NTPC Ramagundam Stage I &II	0.21	0.004
NTPC KUDGI	0.21	0.004
Nani Virani Wind Energy Private Limited	0.20	0.004
ADANI GREEN ENERGY TWENTY SIX A LIMITED infirm	0.13	0.003
Serentica Renewables India 1 Private Limited- Koppal (Infirm)	0.09	0.002
NLC INDIA LIMITED NEYVELI NEW THERMAL POWER STATION	0.08	0.002
NLC INDIA LIMITED THERMAL POWER STATION II STAGE I	0.07	0.002
NLC INDIA LIMITED THERMAL POWER STATION II STAGE II	0.06	0.001
NLC Tamilnadu Power Limited	0.05	0.001
NLC INDIA LIMITED THERMAL POWER STATION II EXPANSION	0.02	0.001
NTPC Ramagundam Stage III	0.02	0.0005
Total	4711.98	100.00
Volume sold by top 5 Regional Entities	1283.63	27.24
Herfindahl-Hirschman Index		0.0280

Source: NLDC

Table-21: VOLUME OF ELECTRICITY PURCHASED IN DAY AHEAD MARKET THROUGH POWER EXCHANGES, AUGUST 2024

Name of the Entity	Volume of Purchase (MUs)	% of Volume
Telangana	1967.10	41.75
Gujarat	514.00	10.91
Andhra Pradesh	367.70	7.80
Maharashtra	287.46	6.10
Daman and Diu - Dadra and Nagar Haveli	250.50	5.32
Uttar Pradesh	236.99	5.03
Tamil Nadu	218.84	4.64
Punjab	193.60	4.11
West Bengal	115.02	2.44
Haryana	78.38	1.66
Kerala	57.81	1.23
Delhi	51.33	1.09
Rajasthan	50.77	1.08
Uttarakhand	50.14	1.06
Madhya Pradesh	37.96	0.81
Karnataka	26.18	0.56
BHARAT ALUMINIUM COMPANY LTD (Bulk Consumer)	24.37	0.52
Assam	22.29	0.47
MB POWER (MADHYA PRADESH) LIMITED	18.72	0.40
Chhattisgarh	17.74	0.38
Odisha	17.54	0.37
North Central Railway Prayagraj	16.21	0.34
ArcelorMittal Nippon Steel India Limited	16.05	0.34
Goa WR	12.94	0.27
Himachal Pradesh	12.26	0.26
Sikkim	11.92	0.25
Goa SR	10.83	0.23
Bihar	6.52	0.14
Jammu Kashmir	5.29	0.11
Chandigarh (UT)	5.24	0.11
Jharkhand	5.16	0.11
Tripura	2.67	0.06
Meghalaya	1.69	0.04
Damodar Valley Corporation	0.56	0.01
Pondicherry UT	0.20	0.004
TOTAL	4711.98	100.00
Volume purchased by top 5 Regional Entities	3386.76	71.88
Herfindahl-Hirschman Index		0.2068

Source: NLDC

Table-22: VOLUME OF ELECTRICITY SOLD IN GREEN DAY AHEAD MARKET THROUGH POWER EXCHANGES, AUGUST 2024		
Name of the Entity	Volume of Sale (MUs)	% of Volume
Karnataka	110.97	13.03
ADANI RENEWABLE ENERGY HOLDING FOUR LIMITED	83.87	9.85
Himachal Pradesh	56.82	6.67
ADANI RENEWABLE ENERGY FORTY ONE LIMITED infirm	55.28	6.49
Adani Green Energy Twenty Five B Limited infirm	54.45	6.39
Meghalaya	48.75	5.72
RENEW SURYA OJAS PRIVATE LIMITED-Wind	44.00	5.17
ADANI WIND ENERGY KUTCHH FOUR Ltd. Nakhatrana	35.07	4.12
Maharashtra	31.82	3.74
Singoli Bhatwari HEP	28.65	3.36
ADANI SOLAR ENERGY RJ TWO PRIVATE LIMITED	26.16	3.07
Madhya Pradesh	23.28	2.73
Uttar Pradesh	17.60	2.07
OSTRO KANNADA POWER PRIVATE LIMITED	17.51	2.06
Grian Energy Private Limited	17.10	2.01
Uttarakhand	17.03	2.00
Transition Green Energy Private Limited	15.48	1.82
Andhra Pradesh	14.87	1.75
TPSL 200MW TPTCL Banderwala	13.27	1.56
Ayana Renewable Power Three Private Limited Infirm	12.91	1.52
Adani Green Energy Twenty Six B Limited infirm	12.84	1.51
ADANI RENEWABLE ENERGY FIFTY FIVE LIMITED Infirm	11.71	1.37
Transition Energy Services Private Limited	10.37	1.22
ADANI WIND ENERGY KUTCHH FOUR Ltd. Nakhatrana (infirm)	10.33	1.21
Jammu Kashmir	10.11	1.19
Adani Green Energy Twenty Five A Limited Infirm	9.50	1.12
Rajasthan	8.58	1.01
ADANI SOLAR ENERGY JAISALMER TWO PRIVATE LIMITED(Project-2)	6.33	0.74
West Bengal	5.57	0.65
Amplus Ages Private Limited	5.52	0.65
WIND FIVE RENERGY LIMITED	5.11	0.60
ReNew Surya Ravi Private Limited	4.23	0.50
CONTINUUM POWER TRADING (TN) PRIVATE LIMITED	3.56	0.42
Nani Virani Wind Energy Private Limited	3.46	0.41
Sikkim	2.81	0.33
TPSL Banderwala SECI 100 INF	2.55	0.30
ADANI SOLAR ENERGY RJ TWO PRIVATE LIMITED (infirm)	2.42	0.28
RENEW SURYA OJAS PRIVATE LIMITED INFIRM	2.29	0.27
ADANI SOLAR ENERGY JODHPUR TWO LIMITED	2.11	0.25
Ramagundam Floating solar	1.94	0.23
Delhi	1.81	0.21
Serentica Renewables India 1 Private Limited- Koppal (Infirm)	1.34	0.16
Simhadri FSP 15 MW	1.03	0.12
Simhadri Floating solar (10 MW)	0.41	0.05
ADANI GREEN ENERGY TWENTY SIX A LIMITED infirm	0.35	0.04
Serentica Renewables India 1 Private Limited	0.26	0.03
JSW RENEW ENERGY TWO LIMITED INFIRM	0.06	0.01
Total	851.47	100.00
Volume sold by top 5 Regional Entities	361.38	42.44
Herfindahl-Hirschman Index		0.0554

Source: NLDC

Table-23: VOLUME OF ELECTRICITY PURCHASED IN GREEN DAY AHEAD MARKET THROUGH POWER EXCHANGES, AUGUST 2024		
Name of the Entity	Volume of Purchase (MUs)	% of Volume
Punjab	232.42	27.30
ArcelorMittal Nippon Steel India Limited	123.90	14.55
Odisha	91.63	10.76
Maharashtra	86.34	10.14
Damodar Valley Corporation	43.65	5.13
Tamil Nadu	41.60	4.89
Haryana	33.45	3.93
Gujarat	33.12	3.89
Jharkhand	26.48	3.11
Karnataka	23.97	2.82
North Central Railway Prayagraj	18.16	2.13
BHARAT ALUMINIUM COMPANY LTD (Bulk Consumer)	17.70	2.08
Chhattisgarh	15.13	1.78
Kerala	13.96	1.64
Uttar Pradesh	10.98	1.29
Andhra Pradesh	9.68	1.14
Bihar	8.64	1.02
Delhi	7.67	0.90
Telangana	5.26	0.62
Madhya Pradesh	3.70	0.43
Jhabua Power Limited	2.34	0.28
Goa WR	1.40	0.16
Goa SR	0.29	0.03
TOTAL	851.47	100.00
Volume purchased by top 5 Regional Entities	577.94	67.88
Herfindahl-Hirschman Index		0.1294

Source: NLDC

Table-24: VOLUME OF ELECTRICITY SOLD IN HIGH PRICE DAY AHEAD MARKET THROUGH POWER EXCHANGES, AUGUST 2024

Name of the Entity	Volume of Sale (MUs)	% of Volume
No Trade	0.00	-
TOTAL	0.00	0.00
Volume sold by top 5 Regional Entities	0.00	-
Herfindahl-Hirschman Index		-

Source: NLDC

Table-25: VOLUME OF ELECTRICITY PURCHASED IN HIGH PRICE DAY AHEAD MARKET THROUGH POWER EXCHANGES, AUGUST 2024

Name of the Entity	Volume of Purchase (MUs)	% of Volume
No Trade	0.00	-
TOTAL	0.00	0.00
Volume purchased by top 5 Regional Entities	0.00	-
Herfindahl-Hirschman Index		-

Source: NLDC

Table-26: VOLUME OF ELECTRICITY SOLD IN REAL TIME MARKET THROUGH POWER EXCHANGES, AUGUST 2024

Name of the Entity	Volume of Sale (MUs)	% of Volume
Bihar	366.62	10.50
Madhya Pradesh	273.11	7.82
Rajasthan	257.22	7.37
Tamil Nadu	200.47	5.74
Jammu Kashmir	183.56	5.26
Haryana	169.51	4.86
Himachal Pradesh	153.81	4.41
Karnataka	144.05	4.13
Punjab	122.16	3.50
Odisha	119.95	3.44
Delhi	116.59	3.34
Uttar Pradesh	79.75	2.28
Chhattisgarh	70.11	2.01
Andhra Pradesh	58.35	1.67
West Bengal	45.89	1.31
Jharkhand	43.65	1.25
Sasan Power Limited	40.64	1.16
Arunachal Pradesh	40.08	1.15
Assam	39.67	1.14
Telangana	32.06	0.92
SEIL ENERGY INDIA LIMITED	30.55	0.88
Maharashtra	30.40	0.87
Jhabua Power Limited	27.28	0.78
MEENAKSHI ENERGY LIMITED	24.18	0.69
Damodar Valley Corporation	23.40	0.67
Adani Power Limited-Raipur TPP	23.22	0.66
TRN ENERGY PRIVATE LIMITED	23.21	0.66
NTPC Farakka stage I	20.32	0.58
Gujarat	19.50	0.56
KARCHAM WANGTOO HYDRO ELECTRIC PLANT.	18.47	0.53
ADANI RENEWABLE ENERGY HOLDING FOUR LIMITED	18.25	0.52
RENEW SURYA OJAS PRIVATE LIMITED-Wind	18.07	0.52
NABINAGAR POWER GENERATING COMPANY LIMITED	17.31	0.50
NTPC Singrauli	17.25	0.49
AD HYDRO POWER LIMITED	15.42	0.44
NLC Tamilnadu Power Limited	15.01	0.43
NTPC Sipat Stage I	14.82	0.42
Uttarakhand	14.40	0.41
Jindal Power Limited, Stage-2	14.17	0.41
ADANI RENEWABLE ENERGY FORTY ONE LIMITED infirm	14.02	0.40
NTPC Kahalgaon stage II	13.41	0.38
Adani Green Energy Twenty Five B Limited infirm	12.16	0.35
Tripura	11.79	0.34
NTPC Rihand stage III	11.64	0.33
NTPC Talcher Super Thermal Power Station Stage II	11.62	0.33
NREL-Dayapar Wind	11.13	0.32
NTPC Vindhyachal Stage IV	11.07	0.32
Pondicherry UT	10.74	0.31
NTPC Rihand stage II	10.63	0.30
NTPC Korba Stage I &II	10.54	0.30
Sikkim	10.25	0.29
NTPC Rihand stage I	10.17	0.29
SKS Power Generation Chhattisgarh Limited	9.84	0.28

ReNew Surya Ravi Private Limited	9.74	0.28
ADANI WIND ENERGY KUTCHH FOUR Ltd. Nakhatrana	9.50	0.27
Manipur	9.45	0.27
Jindal India Thermal Power Limited	8.87	0.25
NTPC Sipat Stage II	8.82	0.25
NTPC Lara Stage I	8.21	0.24
The Tata Power Co Ltd (MTPS)	8.14	0.23
D B Power Limited	7.61	0.22
NTPC Kahalgaon stage I	7.27	0.21
NTPC Vindhyachal Stage I	7.12	0.20
Transition Green Energy Private Limited	7.03	0.20
MB POWER (MADHYA PRADESH) LIMITED	6.98	0.20
NTPC Tanda Stage II	6.83	0.20
NTPC Vindhyachal Stage II	6.58	0.19
NEPAL ELECTRICITY AUTHORITY MUZAFFARPUR	6.42	0.18
NTPC BARH Stage II	6.41	0.18
NTPC Vindhyachal Stage III	6.34	0.18
NTPC Farakka stage III	6.12	0.18
MAHAN ENERGEN LIMITED U#1	6.05	0.17
Sorang HEP (Himachal Sorang Power Pvt. Ltd.)	5.85	0.17
RENEW SURYA ROSHNI PRIVATE LIMITED Koppal PS	5.66	0.16
NTPC Gadarwara	5.38	0.15
NTPC Telangana	5.32	0.15
Adani Power Limited - Raigarh TPP	5.22	0.15
NTPC khargone	5.21	0.15
Palatana Plant	5.13	0.15
MAITHON POWER LIMITED	4.99	0.14
NTPC Vindhyachal Stage V	4.94	0.14
ACB (INDIA) LIMITED	4.92	0.14
Kerala	4.78	0.14
Singoli Bhatwari HEP	4.76	0.14
Serentica Renewables India 1 Private Limited	4.50	0.13
NTPC North Karanpura STPS	4.49	0.13
RENEW SURYA PRATAP PRIVATE LIMITED	4.35	0.12
NTPC KUDGI	4.23	0.12
Onevolt Energy Private Limited	4.17	0.12
NTPC Darlipali	4.10	0.12
Grian Energy Private Limited	4.06	0.12
Jindal Steel & Power Ltd , DCCP	3.97	0.11
Meghalaya	3.97	0.11
OSTRO KANNADA POWER PRIVATE LIMITED	3.86	0.11
Jindal Power Limited, Stage-1	3.81	0.11
Amplus Ages Private Limited	3.80	0.11
RENEW SURYA OJAS PRIVATE LIMITED INFIRM	3.79	0.11
NTPC Dadri Stage II	3.77	0.11
Bongaigaon Thermal Power Station NTPC	3.74	0.11
Chandigarh (UT)	3.71	0.11
NLC INDIA LIMITED THERMAL POWER STATION II STAGE II	3.70	0.11
NTPC Mouda Stage II	3.66	0.10
Amp Energy Green Six Private Limited	3.63	0.10
NLC INDIA LIMITED THERMAL POWER STATION I EXPANSION	3.54	0.10
Transition Energy Services Private Limited	3.49	0.10
NLC INDIA LIMITED NEYVELI NEW THERMAL POWER STATION	3.48	0.10
NTPC Talcher Stage I	3.43	0.10
NTPC Simhadri Stage II	3.34	0.10
NTPC Unchahar Stage II	3.21	0.09
NTPC Korba Stage III	3.21	0.09

KANTI BIJLEE UTPADAN NIGAM LIMITED	3.13	0.09
MAHAN ENERGEN LIMITED U#2	3.00	0.09
ADANI SOLAR ENERGY JAISALMER TWO PRIVATE LIMITED(Project-2)	2.92	0.08
ADANI SOLAR ENERGY RJ TWO PRIVATE LIMITED	2.91	0.08
R.K.M POWERGEN PRIVATE LIMITED	2.87	0.08
Serentica Renewables India 1 Private Limited- Koppal (Infirm)	2.83	0.08
SHREE CEMENT LIMITED TPS	2.73	0.08
Serentica Renewables India 4 Private Limited	2.70	0.08
NTPC Unchahar Stage IV	2.59	0.07
NTPP BRBCL	2.47	0.07
ADHUNIK POWER & NATURAL RESOURCES LIMITED	2.41	0.07
NTPC Mouda Stage I	2.31	0.07
IGSTPS JHAJJAR	2.29	0.07
Adept Renewable Technologies Private Limited	2.16	0.06
Nagaland	2.14	0.06
NTPC Ramagundam Stage I &II	2.11	0.06
JORETHANG LOOP HEP, DANS ENERGY PRIVATE LIMITED	2.07	0.06
IL&FS TAMIL NADU POWER COMPANY LIMITED	2.07	0.06
SIMHAPURI ENERGY LIMITED	1.99	0.06
TPSL 200MW TPTCL Banderwala	1.83	0.05
NTPC Solapur	1.76	0.05
IND BARATH ENERGY UTKAL LIMITED	1.65	0.05
TPSL Banderwala SECI 100 INF	1.62	0.05
Maruti Clean Coal and Power Limited	1.61	0.05
ASSAM GAS BASED POWER STATION	1.44	0.04
NEPAL ELECTRICITY AUTHORITY TANAKPUR	1.35	0.04
Government of Himachal Pradesh Parbati3HEP	1.34	0.04
NTPC Simhadri Stage I	1.33	0.04
Budhil HEP (Greenko Budhil Hydro Power Pvt. Ltd.)	1.27	0.04
NTPC BARH Stage I	1.26	0.04
NLC INDIA LIMITED THERMAL POWER STATION II STAGE I	1.23	0.04
Tashiding HEP, Shiga Energy Private Limited	1.21	0.03
SEIL Energy India Limited Project II	1.17	0.03
NTPC Unchahar Stage III	1.17	0.03
Basochhu Hydropower Plant Bhutan	1.15	0.03
NTPC Unchahar Stage I	1.14	0.03
NTECL VALLUR	1.07	0.03
Government of Himachal Pradesh Chamera1HEP	1.04	0.03
ADANI RENEWABLE ENERGY FIFTY FIVE LIMITED Infirm	0.95	0.03
NTPC Ramagundam Stage III	0.94	0.03
Goa WR	0.89	0.03
NTPC Dadri Stage I	0.83	0.02
DGEN MEGA POWER PROJECT	0.82	0.02
AGARTALA GAS BASED POWER STATION	0.74	0.02
NLC INDIA LIMITED THERMAL POWER STATION II EXPANSION	0.73	0.02
ADANI SOLAR ENERGY JODHPUR TWO LIMITED	0.66	0.02
Sainj HEP	0.60	0.02
KAMENG HYDRO POWER STATION	0.48	0.01
Daman and Diu - Dadra and Nagar Haveli	0.45	0.01
RENEW SURYA ROSHNI PRIVATE LIMITED-Fatehgarh-III PS	0.38	0.01
Ramagundam Floating solar	0.35	0.01
Government of Himachal Pradesh BairasuilHEP	0.33	0.01
CONTINUUM POWER TRADING (TN) PRIVATE LIMITED	0.32	0.01
GMR Warora Energy Limited	0.28	0.01
Chuzachen HEP	0.26	0.01
Government of Himachal Pradesh Koldam HEP	0.25	0.01

Jaypee Nigrie Super Thermal Power Plant	0.24	0.01
Nani Virani Wind Energy Private Limited	0.23	0.01
GMR KAMALANGA ENERGY LTD-CTU	0.22	0.01
NTPC SAIL POWER COMPANY LIMITED	0.12	0.00
WIND FIVE RENERGY LIMITED	0.10	0.00
COASTAL ENERGEN PRIVATE LIMITED	0.10	0.00
Adani Green Energy Twenty Five A Limited Infirm	0.09	0.00
ADANI WIND ENERGY KUTCHH FOUR Ltd. Nakhatrana (infirm)	0.06	0.00
Simhadri Floating solar (10 MW)	0.06	0.00
Government of Himachal Pradesh NJHPS	0.05	0.00
Dhariwal ISTS	0.05	0.00
DHARIWAL STU OTH	0.04	0.00
Nikachhu Hydropower Project	0.03	0.00
Adani Green Energy Twenty Six B Limited infirm	0.02	0.001
Government of Himachal Pradesh Chamera3HEP	0.02	0.001
Government of Himachal Pradesh RampurHEP	0.02	0.001
Government of Himachal Pradesh CHAMERA2HEP	0.01	0.0003
Goa SR	0.01	0.0002
ADANI SOLAR ENERGY RJ TWO PRIVATE LIMITED (infirm)	0.004	0.0001
ADANI GREEN ENERGY TWENTY SIX A LIMITED infirm	0.001	0.00002
Total	3491.31	100.00
Volume sold by top 5 Regional Entities	1280.98	36.69
Herfindahl-Hirschman Index		0.0412

Source: NLDC

Table-27: VOLUME OF ELECTRICITY PURCHASED IN REAL TIME MARKET THROUGH POWER EXCHANGES, AUGUST 2024

Name of the Entity	Volume of Purchase (MUs)	% of Volume
Telangana	665.77	19.07
Punjab	624.61	17.89
Uttar Pradesh	318.38	9.12
West Bengal	217.36	6.23
Andhra Pradesh	205.01	5.87
Maharashtra	191.87	5.50
Kerala	163.62	4.69
Odisha	135.85	3.89
Gujarat	135.81	3.89
Tamil Nadu	102.95	2.95
Assam	96.11	2.75
Uttarakhand	81.79	2.34
Delhi	77.91	2.23
Rajasthan	77.17	2.21
Damodar Valley Corporation	39.65	1.14
Daman and Diu - Dadra and Nagar Haveli	34.56	0.99
Chhattisgarh	28.81	0.83
Madhya Pradesh	28.59	0.82
Karnataka	28.52	0.82
Haryana	23.26	0.67
Jharkhand	21.82	0.63
Himachal Pradesh	21.15	0.61
MB POWER (MADHYA PRADESH) LIMITED	20.81	0.60
Jindal Power Limited, Stage-2	19.88	0.57
Bihar	17.12	0.49
MAHAN ENERGEN LIMITED U#2	15.11	0.43
BHARAT ALUMINIUM COMPANY LTD (Bulk Consumer)	13.51	0.39
ArcelorMittal Nippon Steel India Limited	11.24	0.32
Manipur	7.40	0.21
Jindal Steel & Power Ltd , DCCP	7.29	0.21
Meghalaya	6.39	0.18
Tripura	5.73	0.16
Jindal Power Limited, Stage-1	4.89	0.14
North Central Railway Prayagraj	4.56	0.13
Goa WR	4.30	0.12
Jhabua Power Limited	2.86	0.08
Government of Himachal Pradesh Chamera IHEP	2.70	0.08
Goa SR	2.68	0.08
Singoli Bhatwari HEP	2.43	0.07
Government of Himachal Pradesh BairasuilHEP	2.06	0.06
Adani Power Limited-Raipur TPP	1.93	0.06
Government of Himachal Pradesh Koldam HEP	1.80	0.05
MAHAN ENERGEN LIMITED U#1	1.71	0.05
MEENAKSHI ENERGY LIMITED	1.59	0.05
Government of Himachal Pradesh Parbati3HEP	1.51	0.04
Sainj HEP	1.43	0.04
Ratnagiri Gas & Power Private Limited	1.15	0.03
Chandigarh (UT)	1.13	0.03
ACB (INDIA) LIMITED	1.09	0.03
Government of Himachal Pradesh CHAMERA2HEP	0.76	0.02
NTPC Jhanor Gandhar GPS	0.76	0.02
Government of Himachal Pradesh Chamera3HEP	0.70	0.02
NTPC Kawas GPS	0.68	0.02

Pondicherry UT	0.65	0.02
Jammu Kashmir	0.56	0.02
Sikkim	0.55	0.02
Maruti Clean Coal and Power Limited	0.48	0.01
SIMHAPURI ENERGY LIMITED	0.45	0.01
The Tata Power Co Ltd (MTPS)	0.36	0.01
Government of Himachal Pradesh NJHPS	0.23	0.01
SKS Power Generation Chhattisgarh Limited	0.09	0.003
Government of Himachal Pradesh RampurHEP	0.08	0.002
Nagaland	0.06	0.002
TOTAL	3491.31	100.00
Volume purchased by top 5 Regional Entities	2031.13	58.18
Herfindahl-Hirschman Index		0.0961

Source: NLDC

Table-28: TOTAL VOLUME OF NET TRANSACTIONS THROUGH POWER EXCHANGES (REGIONAL ENTITY-WISE), AUGUST 2024		
S. No.	Name of the Entity	Total volume of net transactions through Power Exchanges*
1	PUNJAB	2993.36
2	UTTAR PRADESH	2677.21
3	TELANGANA	2349.06
4	WEST BENGAL	1414.76
5	HARYANA	1362.15
6	DELHI	836.99
7	BIHAR	666.20
8	ANDHRA PRADESH	657.98
9	TAMIL NADU	431.17
10	GUJARAT	420.85
11	Daman and Diu - Dadra and Nagar Haveli	284.61
12	ArcelorMittal Nippon Steel India Limited	220.67
13	ASSAM	103.41
14	UTTARAKHAND	96.39
15	Damodar Valley Corporation	76.72
16	BHARAT ALUMINIUM COMPANY LTD (Bulk Consumer)	58.19
17	North Central Railway Prayagraj	38.93
18	MAHARASHTRA	38.52
19	JHARKHAND	26.00
20	Goa WR	17.33
21	Goa SR	14.15
22	NTPC Jhanor Gandhar GPS	0.76
23	NTPC Kawas GPS	0.68
24	JSW RENEW ENERGY TWO LIMITED INFIRM	-0.06
25	NTPC SAIL POWER COMPANY LIMITED	-0.12
26	Chuzachen HEP	-0.30
27	NTPC ANTA GPS RLNG	-0.43
28	NTPC Jhanor Gandhar GPS COMGAS	-0.44
29	CHAMERA I POWER STATION	-0.45
30	ADANI GREEN ENERGY TWENTY SIX A LIMITED infirm	-0.49
31	NTPC Kawas GPS COMGAS	-0.54
32	NTPC AURAIYA GPS RLNG	-0.61
33	NLC INDIA LIMITED THERMAL POWER STATION II EXPANSION	-0.76
34	NTPC DADRI GPS RLNG	-0.82
35	NTPC Dadri Stage I	-0.83
36	Sembcorp Energy India Limited Project II	-0.85
37	AGARTALA GAS BASED POWER STATION	-0.87
38	GMR KAMALANGA ENERGY LTD-CTU	-0.89
39	NTPC Ramagundam Stage III	-0.97
40	NTECL VALLUR	-1.07
41	Simhadri Floating solar (10 MW)	-1.27
42	NLC INDIA LIMITED THERMAL POWER STATION II STAGE I	-1.31
43	NTPC Simhadri Stage I	-1.33
44	NTPC SOLAPUR SOLAR PV Station	-1.54
45	Tashiding HEP, Shiga Energy Private Limited	-1.54
46	ASSAM GAS BASED POWER STATION	-1.83
47	NTPC Unchahar Stage III	-1.88
48	NTPC Unchahar Stage I	-2.05
49	JORETHANG LOOP HEP, DANS ENERGY PRIVATE LIMITED	-2.12
50	NTPC Ramagundam Stage I &II	-2.33
51	Simhadri FSP 15 MW	-2.33
52	ADHUNIK POWER & NATURAL RESOURCES LIMITED	-2.41
53	NTPC Solapur	-2.88
54	ADANI SOLAR ENERGY RJ TWO PRIVATE LIMITED (infirm)	-3.11
55	NTPC Mouda Stage I	-3.15
56	NTPC BARH Stage I	-3.18
57	NLC INDIA LIMITED NEYVELI NEW THERMAL POWER STATION	-3.56
58	NLC INDIA LIMITED THERMAL POWER STATION I EXPANSION	-3.76
59	NLC INDIA LIMITED THERMAL POWER STATION II STAGE II	-3.76
60	Ratnagiri Gas & Power Private Limited	-3.87
61	NTPC Simhadri Stage II	-3.93
62	Nani Virani Wind Energy Private Limited	-4.04

63	CONTINUUM POWER TRADING (TN) PRIVATE LIMITED	-4.08
64	GMR Warora Energy Limited	-4.23
65	Serentica Renewables India 1 Private Limited- Koppal (Infirm)	-4.25
66	NTPC KUDGI	-4.44
67	NTPC Dadri Stage II	-4.69
68	NEA Likhu-2 Hydropower Project	-4.89
69	NTPC Unchahar Stage IV	-4.97
70	MAITHON POWER LIMITED	-4.99
71	NTPC Unchahar Stage II	-5.21
72	NTPC Mouda Stage II	-5.33
73	Government of Himachal Pradesh BairasuilHEP	-5.67
74	NTPC Korba Stage III	-6.46
75	NTPC Vindhyachal Stage V	-6.53
76	NTPC Gadawara	-6.98
77	Ratnagiri Gas and Power Private Limited-LTRLNG	-7.00
78	NTPC khargone	-7.40
79	RENEW SURYA OJAS PRIVATE LIMITED INFIRM	-7.58
80	TRIPURA	-8.01
81	IRCON RENEWABLE POWER LIMITED Infirm	-8.11
82	NAGALAND	-8.72
83	NTPC Tanda Stage II	-8.77
84	Budhil HEP (Greenko Budhil Hydro Power Pvt. Ltd.)	-9.38
85	Chandigarh (UT)	-9.56
86	NTPC BRBCL	-9.83
87	NTPC Vindhyachal Stage III	-10.35
88	Bongaigaon Thermal Power Station NTPC	-10.58
89	ADANI SOLAR ENERGY JODHPUR TWO LIMITED	-10.68
90	Government of Himachal Pradesh Parbati3HEP	-10.72
91	NTPC Vindhyachal Stage I	-10.90
92	NREL-Dayapar Wind	-11.13
93	NTPC Kahalgaon stage I	-12.10
94	WIND FIVE RENERGY LIMITED	-12.14
95	ADANI WIND ENERGY KUTCHH FOUR Ltd. Nakhatrana (infirm)	-12.29
96	NTPC Vindhyachal Stage II	-12.47
97	Ayana Renewable Power Three Private Limited Infirm	-12.91
98	NTPC Farakka stage III	-13.09
99	Pondicherry UT	-13.33
100	Adani Green Energy Twenty Five A Limited Infirm	-13.36
101	Transition Sustainable Energy Services Private Limited	-13.48
102	NTPC Talcher Super Thermal Power Station Stage II	-13.73
103	NTPC Lara Stage I	-14.55
104	Ramagundam Floating solar	-14.70
105	NTPC Sipat Stage II	-14.97
106	Government of Himachal Pradesh Chamera3HEP	-15.02
107	NLC Tamilnadu Power Limited	-15.05
108	Government of Himachal Pradesh Koldam HEP	-15.27
109	NTPC Vindhyachal Stage IV	-16.55
110	ADANI RENEWABLE ENERGY FIFTY FIVE LIMITED Infirm	-17.41
111	Adani Green Energy Twenty Six B Limited infirm	-17.59
112	RENEW SURYA ROSHNI PRIVATE LIMITED-Fatehgarh-III PS	-17.81
113	Government of Himachal Pradesh CHAMERA2HEP	-18.06
114	Palatana Plant	-18.36
115	NTPC Kahalgaon stage II	-18.56
116	CHHATTISGARH	-18.94
117	NTPC Korba Stage I &II	-19.27
118	TPSL Banderwala SECI 100 INF	-19.96
119	Serentica Renewables India 1 Private Limited	-20.14
120	Nikachhu Hydropower Project	-20.55
121	Dhariwal ISTS	-20.66
122	Amp Energy Green Six Private Limited	-20.70
123	The Tata Power Co Ltd (MTPS)	-21.01
124	Transition Energy Services Private Limited	-21.74
125	Grian Energy Private Limited	-22.06
126	Transition Green Energy Private Limited	-22.51
127	Onevolt Energy Private Limited	-22.76
128	Maruti Clean Coal and Power Limited	-22.89

129	NTPC Darlipali	-23.27
130	MIZORAM	-23.45
131	ODISHA	-24.43
132	RENEW SURYA ROSHNI PRIVATE LIMITED Koppal PS	-24.90
133	NTPC Sipat Stage I	-25.33
134	DHARIWAL STU OTH	-25.84
135	Adept Renewable Technologies Private Limited	-25.93
136	NTPC Rihand stage II	-26.39
137	Government of Himachal Pradesh Chamera I HEP	-26.81
138	Amplus Ages Private Limited	-27.42
139	NTPC Rihand stage III	-27.71
140	MEENAKSHI ENERGY LIMITED	-29.43
141	ADANI SOLAR ENERGY JAISALMER TWO PRIVATE LIMITED(Project-2)	-29.46
142	Government of Himachal Pradesh NJHPS	-30.47
143	Government of Himachal Pradesh RampurHEP	-30.48
144	NTPC Rihand stage I	-30.56
145	MANIPUR	-31.74
146	TRN ENERGY PRIVATE LIMITED	-32.43
147	OSTRO KANNADA POWER PRIVATE LIMITED	-32.85
148	Basochhu Hydropower Plant Bhutan	-35.66
149	ADANI SOLAR ENERGY RJ TWO PRIVATE LIMITED	-36.36
150	RENEW SURYA PRATAP PRIVATE LIMITED	-36.64
151	Sasan Power Limited	-40.64
152	NTPC Farakka stage I	-42.43
153	Serentica Renewables India 4 Private Limited	-42.78
154	Sainj HEP	-43.35
155	NEPAL ELECTRICITY AUTHORITY TANAKPUR	-44.07
156	TPSL 200MW TPTCL Banderwala	-45.10
157	SIKKIM	-47.09
158	Jindal Steel & Power Ltd , DCPD	-48.03
159	KANTI BIJLEE UTPADAN NIGAM LIMITED	-48.42
160	ARUNACHAL PRADESH	-51.65
161	ReNew Surya Ravi Private Limited	-52.45
162	DGEN MEGA POWER PROJECT	-53.91
163	Singoli Bhatwari HEP	-56.11
164	NTPC Singrauli	-56.12
165	SEMBCORP ENERGY INDIA LIMITED	-58.93
166	Sorang HEP (Himachal Sorang Power Pvt. Ltd.)	-70.28
167	NTPC Talcher Stage I	-77.10
168	Jhabua Power Limited	-79.73
169	Adani Green Energy Twenty Five B Limited infirm	-90.09
170	RENEW SURYA OJAS PRIVATE LIMITED-Wind	-90.38
171	ADANI RENEWABLE ENERGY FORTY ONE LIMITED infirm	-92.45
172	KERALA	-92.72
173	ACB (INDIA) LIMITED	-98.16
174	ADANI WIND ENERGY KUTCHH FOUR Ltd. Nakhatrana	-108.04
175	NTPC BARH Stage II	-109.25
176	AD HYDRO POWER LIMITED	-110.64
177	NTPC North Karanpura STPS	-110.78
178	MEGHALAYA	-112.42
179	SEIL Energy India Limited Project II	-114.62
180	SHREE CEMENT LIMITED TPS	-116.21
181	KAMENG HYDRO POWER STATION	-126.43
182	IND BARATH ENERGY UTKAL LIMITED	-137.10
183	ADANI RENEWABLE ENERGY HOLDING FOUR LIMITED	-154.66
184	MB POWER (MADHYA PRADESH) LIMITED	-154.77
185	KARCHAM WANGTOO HYDRO ELECTRIC PLANT.	-158.79
186	COASTAL ENERGEN PRIVATE LIMITED	-158.88
187	SEIL ENERGY INDIA LIMITED	-185.54
188	NTPC Telangana	-191.73
189	D B Power Limited	-201.78
190	SKS Power Generation Chhattisgarh Limited	-216.40
191	Jammu Kashmir	-217.42
192	Jaypee Nigrie Super Thermal Power Plant	-235.77
193	R.K.M POWERGEN PRIVATE LIMITED	-242.78

194	IL&FS TAMIL NADU POWER COMPANY LIMITED	-252.51
195	MAHAN ENERGEN LIMITED U#1	-255.67
196	MAHAN ENERGEN LIMITED U#2	-258.63
197	NABINAGAR POWER GENERATING COMPANY LIMITED	-268.37
198	IGSTPS JHAJJAR	-271.77
199	Jindal India Thermal Power Limited	-304.74
200	SIMHAPURI ENERGY LIMITED	-310.21
201	NEPAL ELECTRICITY AUTHORITY MUZAFFARPUR	-362.91
202	Adani Power Limited - Raigarh TPP	-374.12
203	Jindal Power Limited, Stage-1	-434.72
204	Jindal Power Limited, Stage-2	-552.30
205	Adani Power Limited-Raipur TPP	-574.69
206	HIMACHAL PRADESH	-661.50
207	RAJASTHAN	-1087.87
208	Madhya Pradesh	-1325.28
209	KARNATAKA	-1362.19
* Total net includes net of transactions of electricity through various segments on power exchanges		
(-) indicates sale and (+) indicates purchase		

Table-29: DETAILS OF CONGESTION IN POWER EXCHANGES, AUGUST 2024

	Details of Congestion	Day Ahead Market			Green Day Ahead Market			High Price Day Ahead Market			Real Time Market		
		IEX	PXIL	HPX	IEX	PXIL	HPX	IEX	PXIL	HPX	IEX	PXIL	HPX
1	Unconstrained Cleared Volume (MUs)	4727.13	0.00	0.00	861.74	0.00	0.00	0.00	0.00	0.00	3491.85	4.70	2.12
2	Actual Cleared Volume and hence scheduled (MUs)	4711.98	0.00	0.00	851.47	0.00	0.00	0.00	0.00	0.00	3484.86	4.70	1.76
3	Volume of electricity that could not be cleared and hence not scheduled because of congestion (MUs) *	15.15	0.00	0.00	10.28	0.00	0.00	0.00	0.00	0.00	6.99	0.00	0.36
4	Volume of electricity that could not be cleared and hence not scheduled because of reasons other than congestion (MUs)	0.00	0.00	0.00	0.00	0.00	0.00	0.00	0.00	0.00	0.00	0.00	0.00
5	Volume of electricity that could not be cleared as % to Unconstrained Cleared Volume	0.32%	0.00%	0.00%	1.19%	0.00%	0.00%	0.00%	0.00%	0.00%	0.20%	0.00%	17.16%
6	Percentage of the time congestion occurred during the month (Number of hours congestion occurred/ Total number of hours in the month)	3.63%	0.00%	0.00%	2.82%	0.00%	0.00%	0.00%	0.00%	0.00%	7.02%	0.64%	0.47%
7	Congestion occurrence (%) time block wise												
	0.00 - 6.00 hours	12.04%	0.00%	0.00%	0.00%	0.00%	0.00%	0.00%	0.00%	0.00%	11.48%	0.00%	0.00%
	6.00 - 12.00 hours	15.74%	0.00%	0.00%	36.90%	0.00%	0.00%	0.00%	0.00%	0.00%	28.71%	10.53%	0.00%
	12.00 - 18.00 hours	64.81%	0.00%	0.00%	63.10%	0.00%	0.00%	0.00%	0.00%	0.00%	32.06%	0.00%	0.00%
	18.00 - 24.00 hours	7.41%	0.00%	0.00%	0.00%	0.00%	0.00%	0.00%	0.00%	0.00%	27.75%	89.47%	100.00%
* This power would have been scheduled had there been no congestion													

Source: IEX, PXIL, HPX & NLDC

Table-30: VOLUME OF SHORT TERM TRANSACTIONS OF ELECTRICITY (DAY-WISE) (MUs), AUGUST 2024

Date	Bilateral [^] (Traders, PX, Direct)	Day Ahead Market [#]			Green Day Ahead Market [#]			High Price DAM [#]			Real Time Market [#]			Total Electricity Generation (MU)*
		IEX	PXIL	HPX	IEX	PXIL	HPX	IEX	PXIL	HPX	IEX	PXIL	HPX	
1-Aug-24	382.33	168.74	0.00	0.00	27.15	0.00	0.00	0.00	0.00	0.00	130.91	0.00	0.00	4119.92
2-Aug-24	338.64	161.19	0.00	0.00	36.25	0.00	0.00	0.00	0.00	0.00	119.48	0.00	0.00	4073.68
3-Aug-24	343.00	159.99	0.00	0.00	40.09	0.00	0.00	0.00	0.00	0.00	126.37	0.00	0.00	4021.46
4-Aug-24	319.14	151.85	0.00	0.00	39.17	0.00	0.00	0.00	0.00	0.00	148.69	0.00	0.00	3904.96
5-Aug-24	348.07	178.15	0.00	0.00	36.57	0.00	0.00	0.00	0.00	0.00	126.85	0.10	0.49	4329.28
6-Aug-24	382.19	177.10	0.00	0.00	32.52	0.00	0.00	0.00	0.00	0.00	117.16	0.00	0.25	4381.69
7-Aug-24	381.61	152.54	0.00	0.00	29.49	0.00	0.00	0.00	0.00	0.00	108.21	0.00	0.00	4253.59
8-Aug-24	369.82	155.76	0.00	0.00	25.84	0.00	0.00	0.00	0.00	0.00	99.36	0.00	0.00	4235.02
9-Aug-24	362.35	147.95	0.00	0.00	28.35	0.00	0.00	0.00	0.00	0.00	113.65	0.00	0.00	4332.86
10-Aug-24	364.22	156.25	0.00	0.00	32.63	0.00	0.00	0.00	0.00	0.00	109.16	0.00	0.00	4276.00
11-Aug-24	342.78	164.90	0.00	0.00	26.07	0.00	0.00	0.00	0.00	0.00	108.34	0.00	0.00	3948.10
12-Aug-24	368.18	153.14	0.00	0.00	19.31	0.00	0.00	0.00	0.00	0.00	104.14	0.00	0.00	4091.98
13-Aug-24	391.07	149.11	0.00	0.00	19.76	0.00	0.00	0.00	0.00	0.00	86.47	0.92	0.00	4549.38
14-Aug-24	396.02	166.62	0.00	0.00	19.90	0.00	0.00	0.00	0.00	0.00	93.71	0.67	0.00	4697.55
15-Aug-24	377.58	148.70	0.00	0.00	21.09	0.00	0.00	0.00	0.00	0.00	130.87	0.40	0.00	4380.65
16-Aug-24	392.74	155.49	0.00	0.00	19.52	0.00	0.00	0.00	0.00	0.00	104.71	0.66	0.45	4647.50
17-Aug-24	384.07	165.02	0.00	0.00	17.78	0.00	0.00	0.00	0.00	0.00	87.31	0.00	0.00	4599.42
18-Aug-24	369.41	139.16	0.00	0.00	22.77	0.00	0.00	0.00	0.00	0.00	118.23	0.00	0.00	4428.77
19-Aug-24	381.69	154.66	0.00	0.00	27.37	0.00	0.00	0.00	0.00	0.00	89.20	0.00	0.00	4436.94
20-Aug-24	395.41	157.13	0.00	0.00	26.14	0.00	0.00	0.00	0.00	0.00	96.18	0.00	0.00	4388.28
21-Aug-24	387.85	126.33	0.00	0.00	26.38	0.00	0.00	0.00	0.00	0.00	102.95	0.00	0.00	4529.31
22-Aug-24	375.54	157.81	0.00	0.00	29.20	0.00	0.00	0.00	0.00	0.00	103.66	0.11	0.57	4571.68
23-Aug-24	369.18	148.96	0.00	0.00	26.41	0.00	0.00	0.00	0.00	0.00	98.47	0.84	0.00	4457.34
24-Aug-24	378.97	127.31	0.00	0.00	31.49	0.00	0.00	0.00	0.00	0.00	123.19	0.00	0.00	4234.10
25-Aug-24	351.84	123.15	0.00	0.00	27.65	0.00	0.00	0.00	0.00	0.00	123.63	0.00	0.00	3844.17
26-Aug-24	364.02	100.60	0.00	0.00	30.62	0.00	0.00	0.00	0.00	0.00	155.75	0.00	0.00	3908.60
27-Aug-24	373.84	153.19	0.00	0.00	28.60	0.00	0.00	0.00	0.00	0.00	128.80	0.00	0.00	3905.14
28-Aug-24	385.16	163.26	0.00	0.00	24.91	0.00	0.00	0.00	0.00	0.00	99.35	0.00	0.00	4009.03
29-Aug-24	380.94	147.77	0.00	0.00	26.62	0.00	0.00	0.00	0.00	0.00	132.74	0.95	0.00	4016.97
30-Aug-24	393.09	163.34	0.00	0.00	26.98	0.00	0.00	0.00	0.00	0.00	98.39	0.02	0.00	4182.44
31-Aug-24	383.57	136.80	0.00	0.00	24.85	0.00	0.00	0.00	0.00	0.00	98.95	0.02	0.00	4267.65
Total	11534.33	4711.98	0.00	0.00	851.47	0.00	0.00	0.00	0.00	0.00	3484.86	4.70	1.76	132023.46

Source: NLDC

[^] includes bilateral short-term transactions under GNA and T-GNA

* As available on CEA Website. Gross Electricity Generation excluding electricity generation from renewables and captive power plants.

[#] Scheduled volume of all the bid areas.

Note: The columns which were temporarily discontinued from the October 2023 issue, in view of the discrepancy in data provided by NLDC post change in the regime (GNA), have been restored this issue onwards.

Table-31(a): PRICE OF DAY AHEAD TRANSACTIONS OF ELECTRICITY (DAY-WISE) (₹/kWh), AUGUST 2024									
Market Segment	Day Ahead Market of IEX			Day Ahead Market of PXIL			Day Ahead Market of HPX		
Date	Minimum ACP	Maximum ACP	WA Price*	Minimum ACP	Maximum ACP	WA Price*	Minimum ACP	Maximum ACP	WA Price*
1-Aug-24	2.00	10.00	5.84	-	-	-	-	-	-
2-Aug-24	2.00	10.00	4.57	-	-	-	-	-	-
3-Aug-24	2.00	10.00	4.37	-	-	-	-	-	-
4-Aug-24	0.90	10.00	2.71	-	-	-	-	-	-
5-Aug-24	2.10	10.00	4.50	-	-	-	-	-	-
6-Aug-24	2.10	10.00	4.40	-	-	-	-	-	-
7-Aug-24	2.00	10.00	4.76	-	-	-	-	-	-
8-Aug-24	1.85	10.00	4.16	-	-	-	-	-	-
9-Aug-24	1.83	10.00	3.88	-	-	-	-	-	-
10-Aug-24	1.96	10.00	4.15	-	-	-	-	-	-
11-Aug-24	2.00	5.50	3.38	-	-	-	-	-	-
12-Aug-24	2.00	10.00	4.39	-	-	-	-	-	-
13-Aug-24	2.10	10.00	4.65	-	-	-	-	-	-
14-Aug-24	2.94	10.00	5.07	-	-	-	-	-	-
15-Aug-24	1.00	10.00	5.02	-	-	-	-	-	-
16-Aug-24	3.00	10.00	5.11	-	-	-	-	-	-
17-Aug-24	2.30	10.00	4.86	-	-	-	-	-	-
18-Aug-24	1.00	10.00	4.03	-	-	-	-	-	-
19-Aug-24	2.00	10.00	4.19	-	-	-	-	-	-
20-Aug-24	2.30	10.00	4.29	-	-	-	-	-	-
21-Aug-24	1.01	10.00	3.76	-	-	-	-	-	-
22-Aug-24	1.64	10.00	4.40	-	-	-	-	-	-
23-Aug-24	1.00	10.00	4.42	-	-	-	-	-	-
24-Aug-24	0.66	10.00	3.91	-	-	-	-	-	-
25-Aug-24	0.50	4.00	2.30	-	-	-	-	-	-
26-Aug-24	0.30	3.73	1.99	-	-	-	-	-	-
27-Aug-24	0.60	4.29	2.46	-	-	-	-	-	-
28-Aug-24	2.00	9.53	3.51	-	-	-	-	-	-
29-Aug-24	1.90	5.35	3.06	-	-	-	-	-	-
30-Aug-24	2.00	10.00	4.14	-	-	-	-	-	-
31-Aug-24	1.34	10.00	4.31	-	-	-	-	-	-
	0.30#	10.00#	4.13	-	-	-	-	-	-

Source: IEX, PXIL and HPX

* Weighted average price computed based on Area Clearing Volume (ACV) and Area Clearing Price (ACP) for each hour of the day. Here, ACV and ACP represent the scheduled volume and weighted average price of all the bid areas of power exchanges.

Maximum/Minimum in the month

**Table-31(b): PRICE OF GREEN DAY AHEAD TRANSACTIONS OF ELECTRICITY (DAY-WISE) (₹/kWh),
AUGUST 2024**

Market Segment	Green Day Ahead Market of IEX			Green Day Ahead Market of PXIL			Green Day Ahead Market of HPX		
Date	Minimum ACP	Maximum ACP	Weighted Average Price*	Minimum ACP	Maximum ACP	Weighted Average Price*	Minimum ACP	Maximum ACP	Weighted Average Price*
1-Aug-24	3.34	10.00	5.95	-	-	-	-	-	-
2-Aug-24	2.55	10.00	5.14	-	-	-	-	-	-
3-Aug-24	2.05	10.00	3.97	-	-	-	-	-	-
4-Aug-24	1.50	10.00	3.06	-	-	-	-	-	-
5-Aug-24	2.00	10.00	4.81	-	-	-	-	-	-
6-Aug-24	2.40	10.00	4.14	-	-	-	-	-	-
7-Aug-24	2.20	10.00	3.92	-	-	-	-	-	-
8-Aug-24	2.05	10.00	3.87	-	-	-	-	-	-
9-Aug-24	2.00	10.00	3.64	-	-	-	-	-	-
10-Aug-24	1.88	10.00	3.41	-	-	-	-	-	-
11-Aug-24	1.80	7.67	2.95	-	-	-	-	-	-
12-Aug-24	2.00	10.00	3.96	-	-	-	-	-	-
13-Aug-24	2.00	10.00	3.68	-	-	-	-	-	-
14-Aug-24	2.10	10.00	3.68	-	-	-	-	-	-
15-Aug-24	2.00	10.00	4.61	-	-	-	-	-	-
16-Aug-24	2.52	10.00	4.51	-	-	-	-	-	-
17-Aug-24	2.66	10.00	4.53	-	-	-	-	-	-
18-Aug-24	2.00	10.00	3.53	-	-	-	-	-	-
19-Aug-24	2.50	10.00	3.94	-	-	-	-	-	-
20-Aug-24	2.00	10.00	3.30	-	-	-	-	-	-
21-Aug-24	2.30	10.00	3.87	-	-	-	-	-	-
22-Aug-24	1.80	9.20	3.00	-	-	-	-	-	-
23-Aug-24	1.80	9.99	3.26	-	-	-	-	-	-
24-Aug-24	1.70	10.00	3.13	-	-	-	-	-	-
25-Aug-24	1.50	5.10	2.78	-	-	-	-	-	-
26-Aug-24	1.40	7.00	2.75	-	-	-	-	-	-
27-Aug-24	1.50	4.49	2.42	-	-	-	-	-	-
28-Aug-24	1.30	5.00	2.80	-	-	-	-	-	-
29-Aug-24	1.42	10.00	3.50	-	-	-	-	-	-
30-Aug-24	1.90	5.06	3.15	-	-	-	-	-	-
31-Aug-24	1.90	9.99	3.39	-	-	-	-	-	-
	1.30#	10.00#	3.69	-	-	-	-	-	-

Source: IEX, PXIL and HPX

* Weighted average price computed based on Area Clearing Volume (ACV) and Area Clearing Price (ACP) for each hour of the day. Here, ACV and ACP represent the scheduled volume and weighted average price of all the bid areas of power exchanges.

Maximum/Minimum in the month

Table-31(c): PRICE OF REAL TIME TRANSACTIONS OF ELECTRICITY (DAY-WISE) (₹/kWh), AUGUST 2024

Market Segment	Real Time Market of IEX			Real Time Market of PXIL			Real Time Market of HPX		
	Date	Minimum ACP	Maximum ACP	Weighted Average Price*	Minimum ACP	Maximum ACP	Weighted Average Price*	Minimum ACP	Maximum ACP
1-Aug-24	0.60	5.50	2.56	-	-	-	-	-	-
2-Aug-24	0.40	5.50	1.96	-	-	-	-	-	-
3-Aug-24	0.38	5.70	2.02	-	-	-	-	-	-
4-Aug-24	0.50	5.50	2.54	-	-	-	-	-	-
5-Aug-24	1.50	10.00	4.20	10.00	10.00	10.00	10.00	10.00	10.00
6-Aug-24	0.95	10.00	4.02	-	-	-	10.00	10.00	10.00
7-Aug-24	1.00	10.00	3.30	-	-	-	-	-	-
8-Aug-24	1.50	10.00	3.54	-	-	-	-	-	-
9-Aug-24	1.00	10.00	3.65	-	-	-	-	-	-
10-Aug-24	0.70	8.29	3.23	-	-	-	-	-	-
11-Aug-24	0.20	5.50	2.43	-	-	-	-	-	-
12-Aug-24	1.20	10.00	3.89	-	-	-	-	-	-
13-Aug-24	1.92	10.00	4.35	10.00	10.00	10.00	-	-	-
14-Aug-24	3.64	10.00	5.79	10.00	10.00	10.00	-	-	-
15-Aug-24	0.80	10.00	3.29	10.00	10.00	10.00	-	-	-
16-Aug-24	2.50	10.00	4.96	10.00	10.00	10.00	10.00	10.00	10.00
17-Aug-24	1.19	10.00	4.76	-	-	-	-	-	-
18-Aug-24	0.90	8.00	3.19	-	-	-	-	-	-
19-Aug-24	1.09	4.75	3.00	-	-	-	-	-	-
20-Aug-24	0.50	10.00	4.04	3.94	7.00	5.11	-	-	-
21-Aug-24	2.43	10.00	4.48	-	-	-	-	-	-
22-Aug-24	1.70	10.00	4.41	10.00	10.00	10.00	10.00	10.00	10.00
23-Aug-24	1.16	10.00	3.56	10.00	10.00	10.00	-	-	-
24-Aug-24	1.00	4.44	2.67	-	-	-	-	-	-
25-Aug-24	0.34	3.89	1.68	-	-	-	-	-	-
26-Aug-24	0.93	4.75	2.61	-	-	-	-	-	-
27-Aug-24	0.62	4.39	2.21	-	-	-	-	-	-
28-Aug-24	1.00	5.80	2.92	-	-	-	-	-	-
29-Aug-24	0.59	6.00	2.58	5.64	6.00	5.72	-	-	-
30-Aug-24	1.00	10.00	3.62	4.27	5.00	4.57	-	-	-
31-Aug-24	1.60	10.00	4.19	1.50	5.00	4.19	-	-	-
	0.20#	10.00#	3.32	1.50#	10.00#	9.09	10.00#	10.00#	10.00

Source: IEX, PXIL and HPX

* Weighted average price computed based on Area Clearing Volume (ACV) and Area Clearing Price (ACP) for each hour of the day. Here, ACV and ACP represent the scheduled volume and weighted average price of all the bid areas of power exchanges.

Maximum/Minimum in the month

**Table-31(d): PRICE OF HIGH PRICE DAY AHEAD TRANSACTIONS OF ELECTRICITY (DAY-WISE) (₹/kWh),
AUGUST 2024**

Market Segment	High Price Day Ahead Market of IEX			High Price Day Ahead Market of PXIL			High Price Day Ahead Market of HPX		
	Minimum ACP	Maximum ACP	Weighted Average Price	Minimum ACP	Maximum ACP	Weighted Average Price	Minimum ACP	Maximum ACP	Weighted Average Price
1-Aug-24	-	-	-	-	-	-	-	-	-
2-Aug-24	-	-	-	-	-	-	-	-	-
3-Aug-24	-	-	-	-	-	-	-	-	-
4-Aug-24	-	-	-	-	-	-	-	-	-
5-Aug-24	-	-	-	-	-	-	-	-	-
6-Aug-24	-	-	-	-	-	-	-	-	-
7-Aug-24	-	-	-	-	-	-	-	-	-
8-Aug-24	-	-	-	-	-	-	-	-	-
9-Aug-24	-	-	-	-	-	-	-	-	-
10-Aug-24	-	-	-	-	-	-	-	-	-
11-Aug-24	-	-	-	-	-	-	-	-	-
12-Aug-24	-	-	-	-	-	-	-	-	-
13-Aug-24	-	-	-	-	-	-	-	-	-
14-Aug-24	-	-	-	-	-	-	-	-	-
15-Aug-24	-	-	-	-	-	-	-	-	-
16-Aug-24	-	-	-	-	-	-	-	-	-
17-Aug-24	-	-	-	-	-	-	-	-	-
18-Aug-24	-	-	-	-	-	-	-	-	-
19-Aug-24	-	-	-	-	-	-	-	-	-
20-Aug-24	-	-	-	-	-	-	-	-	-
21-Aug-24	-	-	-	-	-	-	-	-	-
22-Aug-24	-	-	-	-	-	-	-	-	-
23-Aug-24	-	-	-	-	-	-	-	-	-
24-Aug-24	-	-	-	-	-	-	-	-	-
25-Aug-24	-	-	-	-	-	-	-	-	-
26-Aug-24	-	-	-	-	-	-	-	-	-
27-Aug-24	-	-	-	-	-	-	-	-	-
28-Aug-24	-	-	-	-	-	-	-	-	-
29-Aug-24	-	-	-	-	-	-	-	-	-
30-Aug-24	-	-	-	-	-	-	-	-	-
31-Aug-24	-	-	-	-	-	-	-	-	-

Source: IEX, PXIL and HPX

Maximum/Minimum in the month

Table-32: VOLUME OF SHORT-TERM TRANSACTIONS OF ELECTRICITY (REGIONAL ENTITY*-WISE) (MUs), AUGUST 2024

Name of the Entity	Through Bilateral			Through Power Exchange (DAM + GDAM + HPDAM + RTM)			Total Net***
	Sale	Purchase	Net**	Sale	Purchase	Net**	
PUNJAB	4.11	2083.03	2078.92	136.20	1050.64	914.43	2993.36
HARYANA	7.44	1468.63	1461.19	234.12	135.08	-99.04	1362.15
RAJASTHAN	967.78	105.62	-862.17	353.64	127.94	-225.71	-1087.87
DELHI	199.44	1163.00	963.56	263.48	136.91	-126.57	836.99
UTTAR PRADESH	114.41	2481.94	2367.53	256.68	566.35	309.67	2677.21
UTTARAKHAND	148.78	147.54	-1.24	34.30	131.93	97.63	96.39
HIMACHAL PRADESH	429.75	15.81	-413.94	280.96	33.41	-247.56	-661.50
Jammu Kashmir	26.14	0.00	-26.14	197.12	5.85	-191.27	-217.42
Chandigarh (UT)	0.00	9.03	9.03	24.95	6.37	-18.58	-9.56
Madhya Pradesh	971.25	7.44	-963.81	431.72	70.25	-361.47	-1325.28
MAHARASHTRA	615.93	189.43	-426.51	100.64	565.67	465.02	38.52
GUJARAT	350.58	160.16	-190.42	71.67	682.93	611.26	420.85
CHHATTISGARH	45.82	183.41	137.59	218.20	61.67	-156.53	-18.94
Goa WR	6.98	14.29	7.31	8.63	18.64	10.02	17.33
Goa SR	0.00	0.36	0.36	0.01	13.80	13.79	14.15
Daman and Diu - Dadra and Nagar Haveli	0.00	0.00	0.00	0.45	285.06	284.61	284.61
ANDHRA PRADESH	28.80	223.34	194.54	118.95	582.39	463.44	657.98
KARNATAKA	830.62	10.93	-819.69	621.17	78.67	-542.50	-1362.19
KERALA	318.48	11.80	-306.68	21.42	235.38	213.96	-92.72
TAMIL NADU	223.20	556.55	333.36	265.59	363.39	97.81	431.17
Pondicherry UT	0.00	0.00	0.00	14.17	0.84	-13.33	-13.33
TELANGANA	259.18	13.76	-245.42	43.65	2638.12	2594.48	2349.06
WEST BENGAL	77.54	1248.96	1171.42	89.04	332.38	243.34	1414.76
ODISHA	84.85	119.80	34.95	304.40	245.02	-59.38	-24.43
BIHAR	0.00	1024.14	1024.14	390.23	32.29	-357.94	666.20
JHARKHAND	0.00	24.33	24.33	51.79	53.46	1.67	26.00
SIKKIM	41.20	0.43	-40.77	18.78	12.47	-6.32	-47.09
Damodar Valley Corporation	32.35	74.40	42.05	49.19	83.86	34.67	76.72
ARUNACHAL PRADESH	10.12	0.00	-10.12	41.53	0.00	-41.53	-51.65
ASSAM	0.00	97.64	97.64	112.64	118.40	5.77	103.41
MANIPUR	29.70	0.00	-29.70	9.45	7.40	-2.04	-31.74
MEGHALAYA	70.36	3.70	-66.65	53.86	8.09	-45.77	-112.42
MIZORAM	0.00	0.00	0.00	23.45	0.00	-23.45	-23.45
NAGALAND	2.25	0.00	-2.25	6.53	0.06	-6.47	-8.72
TRIPURA	0.00	0.00	0.00	16.41	8.40	-8.01	-8.01
AD HYDRO POWER LIMITED	13.95	0.00	-13.95	96.69	0.00	-96.69	-110.64
ADANI SOLAR ENERGY JAISALMER TWO PRIVATE LIMITED(Project-2)	0.00	0.00	0.00	29.46	0.00	-29.46	-29.46
ADANI SOLAR ENERGY JODHPUR TWO LIMITED	1.72	0.00	-1.72	8.96	0.00	-8.96	-10.68
ADANI SOLAR ENERGY RJ TWO PRIVATE LIMITED	0.00	0.00	0.00	36.36	0.00	-36.36	-36.36
ADANI SOLAR ENERGY RJ TWO PRIVATE LIMITED (infirm)	0.00	0.00	0.00	3.11	0.00	-3.11	-3.11
Adept Renewable Technologies Private Limited	0.00	0.00	0.00	25.93	0.00	-25.93	-25.93
Amp Energy Green Six Private Limited	0.00	0.00	0.00	20.70	0.00	-20.70	-20.70
Amplus Ages Private Limited	18.11	0.00	-18.11	9.32	0.00	-9.32	-27.42
Ayana Renewable Power Three Private Limited Infirm	0.00	0.00	0.00	12.91	0.00	-12.91	-12.91
Budhil HEP (Greenko Budhil Hydro Power Pvt. Ltd.)	0.00	0.00	0.00	9.38	0.00	-9.38	-9.38
CHAMERA I POWER STATION	0.45	0.00	-0.45	0.00	0.00	0.00	-0.45
Government of Himachal Pradesh Chamera1HEP	0.00	0.00	0.00	29.51	2.70	-26.81	-26.81
Government of Himachal Pradesh Chamera3HEP	0.00	0.00	0.00	15.72	0.70	-15.02	-15.02
Government of Himachal Pradesh_ CHAMERA2HEP	0.00	0.00	0.00	18.82	0.76	-18.06	-18.06
Government of Himachal Pradesh BairasuilHEP	0.00	0.00	0.00	7.73	2.06	-5.67	-5.67
Government of Himachal Pradesh Koldam HEP	0.00	0.00	0.00	17.07	1.80	-15.27	-15.27
Government of Himachal Pradesh NJHPS	0.00	0.00	0.00	30.70	0.23	-30.47	-30.47

Government of Himachal Pradesh Parbati3HEP	0.00	0.00	0.00	12.23	1.51	-10.72	-10.72
Government of Himachal Pradesh RampurHEP	0.00	0.00	0.00	30.56	0.08	-30.48	-30.48
Grian Energy Private Limited	0.90	0.00	-0.90	21.16	0.00	-21.16	-22.06
IGSTPS JHAJJAR	267.15	0.00	-267.15	4.62	0.00	-4.62	-271.77
KARCHAM WANGTOO HYDRO ELECTRIC PLANT.	20.32	0.00	-20.32	138.47	0.00	-138.47	-158.79
NEPAL ELECTRICITY AUTHORITY TANAKPUR	0.00	0.00	0.00	44.07	0.00	-44.07	-44.07
NTPC ANTA GPS RLNG	0.43	0.00	-0.43	0.00	0.00	0.00	-0.43
NTPC AURAIYA GPS RLNG	0.61	0.00	-0.61	0.00	0.00	0.00	-0.61
NTPC DADRI GPS RLNG	0.82	0.00	-0.82	0.00	0.00	0.00	-0.82
NTPC Dadri Stage I	0.00	0.00	0.00	0.83	0.00	-0.83	-0.83
NTPC Dadri Stage II	0.03	0.00	-0.03	4.66	0.00	-4.66	-4.69
NTPC Rihand stage I	18.93	0.00	-18.93	11.62	0.00	-11.62	-30.56
NTPC Rihand stage II	15.00	0.00	-15.00	11.38	0.00	-11.38	-26.39
NTPC Rihand stage III	15.09	0.00	-15.09	12.62	0.00	-12.62	-27.71
NTPC Singrauli	38.58	0.00	-38.58	17.55	0.00	-17.55	-56.12
NTPC Tanda Stage II	0.02	0.00	-0.02	8.74	0.00	-8.74	-8.77
NTPC Unchahar Stage I	0.00	0.00	0.00	2.05	0.00	-2.05	-2.05
NTPC Unchahar Stage II	0.33	0.00	-0.33	4.88	0.00	-4.88	-5.21
NTPC Unchahar Stage III	0.21	0.00	-0.21	1.67	0.00	-1.67	-1.88
NTPC Unchahar Stage IV	0.00	0.00	0.00	4.97	0.00	-4.97	-4.97
North Central Railway Prayagraj	0.00	0.00	0.00	0.00	38.93	38.93	38.93
Onevolt Energy Private Limited	12.97	0.00	-12.97	9.80	0.00	-9.80	-22.76
RENEW SURYA PRATAP PRIVATE LIMITED	0.00	0.00	0.00	36.64	0.00	-36.64	-36.64
RENEW SURYA ROSHNI PRIVATE LIMITED-Fatehgarh-III PS	17.42	0.00	-17.42	0.38	0.00	-0.38	-17.81
ReNew Surya Ravi Private Limited	13.94	0.00	-13.94	38.52	0.00	-38.52	-52.45
SHREE CEMENT LIMITED TPS	70.65	0.00	-70.65	45.56	0.00	-45.56	-116.21
Sainj HEP	0.00	0.00	0.00	44.78	1.43	-43.35	-43.35
Serentica Renewables India 4 Private Limited	40.07	0.00	-40.07	2.70	0.00	-2.70	-42.78
Singoli Bhatwari HEP	6.79	0.00	-6.79	51.75	2.43	-49.32	-56.11
Sorang HEP (Himachal Sorang Power Pvt. Ltd.)	54.66	0.00	-54.66	15.62	0.00	-15.62	-70.28
TPSL 200MW TPTCL Banderwala	27.84	0.00	-27.84	17.26	0.00	-17.26	-45.10
TPSL Banderwala SECI 100 INF	15.42	0.00	-15.42	4.54	0.00	-4.54	-19.96
Transition Energy Services Private Limited	5.39	0.00	-5.39	16.35	0.00	-16.35	-21.74
Transition Green Energy Private Limited	0.00	0.00	0.00	22.51	0.00	-22.51	-22.51
Transition Sustainable Energy Services Private Limited	13.48	0.00	-13.48	0.00	0.00	0.00	-13.48
ACB (INDIA) LIMITED	52.01	0.00	-52.01	47.24	1.09	-46.15	-98.16
ADANI GREEN ENERGY TWENTY SIX A LIMITED infirm	0.00	0.00	0.00	0.49	0.00	-0.49	-0.49
ADANI RENEWABLE ENERGY FIFTY FIVE LIMITED Infirm	0.44	0.00	-0.44	16.97	0.00	-16.97	-17.41
ADANI RENEWABLE ENERGY FORTY ONE LIMITED infirm	14.60	0.00	-14.60	77.85	0.00	-77.85	-92.45
ADANI RENEWABLE ENERGY HOLDING FOUR LIMITED	25.11	0.00	-25.11	129.55	0.00	-129.55	-154.66
ADANI WIND ENERGY KUTCHH FOUR Ltd. Nakhatrana	19.68	0.00	-19.68	88.37	0.00	-88.37	-108.04
ADANI WIND ENERGY KUTCHH FOUR Ltd. Nakhatrana (infirm)	0.44	0.00	-0.44	11.85	0.00	-11.85	-12.29
Adani Green Energy Twenty Five A Limited Infirm	0.13	0.00	-0.13	13.24	0.00	-13.24	-13.36
Adani Green Energy Twenty Five B Limited infirm	2.83	0.00	-2.83	87.26	0.00	-87.26	-90.09
Adani Green Energy Twenty Six B Limited infirm	0.12	0.00	-0.12	17.47	0.00	-17.47	-17.59
Adani Power Limited - Raigarh TPP	304.78	1.64	-303.13	70.99	0.00	-70.99	-374.12
Adani Power Limited-Raipur TPP	429.15	14.19	-414.96	161.66	1.93	-159.73	-574.69
ArcelorMittal Nippon Steel India Limited	0.00	69.47	69.47	0.00	151.20	151.20	220.67
BHARAT ALUMINIUM COMPANY LTD (Bulk Consumer)	0.00	2.61	2.61	0.00	55.58	55.58	58.19
CONTINUUM POWER TRADING (TN) PRIVATE LIMITED	0.20	0.00	-0.20	3.88	0.00	-3.88	-4.08
D B Power Limited	64.38	0.00	-64.38	137.40	0.00	-137.40	-201.78

DGEN MEGA POWER PROJECT	48.14	0.00	-48.14	5.77	0.00	-5.77	-53.91
DHARIWAL STU OTH	25.13	0.00	-25.13	0.71	0.00	-0.71	-25.84
Dhariwal ISTS	20.09	0.00	-20.09	0.57	0.00	-0.57	-20.66
GMR Warora Energy Limited	0.00	0.00	0.00	4.23	0.00	-4.23	-4.23
Jaypee Nigrie Super Thermal Power Plant	161.33	0.00	-161.33	74.44	0.00	-74.44	-235.77
Jhabua Power Limited	47.50	1.88	-45.63	39.31	5.20	-34.10	-79.73
Jindal Power Limited, Stage-1	337.41	0.00	-337.41	102.19	4.89	-97.31	-434.72
Jindal Power Limited, Stage-2	387.93	4.01	-383.92	188.26	19.88	-168.38	-552.30
Jindal Steel & Power Ltd , DCP	9.60	0.00	-9.60	45.72	7.29	-38.43	-48.03
MAHAN ENERGEN LIMITED U#1	106.21	0.35	-105.86	151.52	1.71	-149.81	-255.67
MAHAN ENERGEN LIMITED U#2	258.66	0.71	-257.95	15.79	15.11	-0.68	-258.63
MB POWER (MADHYA PRADESH) LIMITED	186.85	0.00	-186.85	7.46	39.53	32.08	-154.77
Maruti Clean Coal and Power Limited	16.20	0.00	-16.20	7.18	0.48	-6.70	-22.89
NREL-Dayapar Wind	0.00	0.00	0.00	11.13	0.00	-11.13	-11.13
NTPC Jhanor Gandhar GPS COMGAS	0.44	0.00	-0.44	0.00	0.00	0.00	-0.44
NTPC Gadawara	0.06	0.00	-0.06	6.92	0.00	-6.92	-6.98
NTPC Jhanor Gandhar GPS	0.00	0.00	0.00	0.00	0.76	0.76	0.76
NTPC Kawas GPS	0.00	0.00	0.00	0.00	0.68	0.68	0.68
NTPC Kawas GPS COMGAS	0.54	0.00	-0.54	0.00	0.00	0.00	-0.54
NTPC Korba Stage I & II	0.00	0.00	0.00	19.27	0.00	-19.27	-19.27
NTPC Korba Stage III	0.00	0.00	0.00	6.46	0.00	-6.46	-6.46
NTPC Lara Stage I	0.00	0.00	0.00	14.55	0.00	-14.55	-14.55
NTPC Mouda Stage I	0.00	0.00	0.00	3.15	0.00	-3.15	-3.15
NTPC Mouda Stage II	0.00	0.00	0.00	5.33	0.00	-5.33	-5.33
NTPC SAIL POWER COMPANY LIMITED	0.00	0.00	0.00	0.12	0.00	-0.12	-0.12
NTPC SOLAPUR SOLAR PV Station	1.54	0.00	-1.54	0.00	0.00	0.00	-1.54
NTPC Sipat Stage I	0.00	0.00	0.00	25.33	0.00	-25.33	-25.33
NTPC Sipat Stage II	0.00	0.00	0.00	14.97	0.00	-14.97	-14.97
NTPC Solapur	0.00	0.00	0.00	2.88	0.00	-2.88	-2.88
NTPC Vindhyachal Stage I	0.00	0.00	0.00	10.90	0.00	-10.90	-10.90
NTPC Vindhyachal Stage II	0.00	0.00	0.00	12.47	0.00	-12.47	-12.47
NTPC Vindhyachal Stage III	0.00	0.00	0.00	10.35	0.00	-10.35	-10.35
NTPC Vindhyachal Stage IV	0.00	0.00	0.00	16.55	0.00	-16.55	-16.55
NTPC Vindhyachal Stage V	0.00	0.00	0.00	6.53	0.00	-6.53	-6.53
NTPC khargone	0.00	0.00	0.00	7.40	0.00	-7.40	-7.40
Nani Virani Wind Energy Private Limited	0.15	0.00	-0.15	3.89	0.00	-3.89	-4.04
R.K.M POWERGEN PRIVATE LIMITED	235.00	0.00	-235.00	7.78	0.00	-7.78	-242.78
Ratnagiri Gas & Power Private Limited	5.02	0.00	-5.02	0.00	1.15	1.15	-3.87
Ratnagiri Gas and Power Private Limited-LTRLNG	7.00	0.00	-7.00	0.00	0.00	0.00	-7.00
SKS Power Generation Chhattisgarh Limited	150.61	0.00	-150.61	65.88	0.09	-65.78	-216.40
Sasan Power Limited	0.00	0.00	0.00	40.64	0.00	-40.64	-40.64
TRN ENERGY PRIVATE LIMITED	9.22	0.00	-9.22	23.21	0.00	-23.21	-32.43
The Tata Power Co Ltd (MTPS)	0.00	0.00	0.00	21.36	0.36	-21.01	-21.01
WIND FIVE RENERGY LIMITED	1.61	0.00	-1.61	10.53	0.00	-10.53	-12.14
COASTAL ENERGEN PRIVATE LIMITED	154.73	0.00	-154.73	4.15	0.00	-4.15	-158.88
IL&FS TAMIL NADU POWER COMPANY LIMITED	212.02	0.00	-212.02	40.49	0.00	-40.49	-252.51
IRCON RENEWABLE POWER LIMITED Infirm	8.11	0.00	-8.11	0.00	0.00	0.00	-8.11
SIMHAPURI ENERGY LIMITED	294.61	0.00	-294.61	16.04	0.45	-15.59	-310.21
JSW RENEW ENERGY TWO LIMITED INFIRM	0.00	0.00	0.00	0.06	0.00	-0.06	-0.06
MEENAKSHI ENERGY LIMITED	6.84	0.00	-6.84	24.18	1.59	-22.59	-29.43
NLC INDIA LIMITED NEYVELI NEW THERMAL POWER STATION	0.00	0.00	0.00	3.56	0.00	-3.56	-3.56
NLC INDIA LIMITED THERMAL POWER STATION I EXPANSION	0.00	0.00	0.00	3.76	0.00	-3.76	-3.76
NLC INDIA LIMITED THERMAL POWER STATION II EXPANSION	0.00	0.00	0.00	0.76	0.00	-0.76	-0.76
NLC INDIA LIMITED THERMAL POWER STATION II STAGE I	0.00	0.00	0.00	1.31	0.00	-1.31	-1.31
NLC INDIA LIMITED THERMAL POWER STATION II STAGE II	0.00	0.00	0.00	3.76	0.00	-3.76	-3.76
NLC Tamilnadu Power Limited	0.00	0.00	0.00	15.05	0.00	-15.05	-15.05
NTECL VALLUR	0.00	0.00	0.00	1.07	0.00	-1.07	-1.07

NTPC KUDGI	0.00	0.00	0.00	4.44	0.00	-4.44	-4.44
NTPC Ramagundam Stage I &II	0.00	0.00	0.00	2.33	0.00	-2.33	-2.33
NTPC Ramagundam Stage III	0.00	0.00	0.00	0.97	0.00	-0.97	-0.97
NTPC Simhadri Stage I	0.00	0.00	0.00	1.33	0.00	-1.33	-1.33
NTPC Simhadri Stage II	0.00	0.00	0.00	3.93	0.00	-3.93	-3.93
NTPC Talcher Super Thermal Power Station Stage II	0.00	0.00	0.00	13.73	0.00	-13.73	-13.73
NTPC Telangana	184.76	0.00	-184.76	6.97	0.00	-6.97	-191.73
OSTRO KANNADA POWER PRIVATE LIMITED	1.43	0.00	-1.43	31.42	0.00	-31.42	-32.85
RENEW SURYA OJAS PRIVATE LIMITED-Wind	0.00	0.00	0.00	90.38	0.00	-90.38	-90.38
RENEW SURYA OJAS PRIVATE LIMITED INFIRM	0.00	0.00	0.00	7.58	0.00	-7.58	-7.58
RENEW SURYA ROSHNI PRIVATE LIMITED Koppal PS	19.24	0.00	-19.24	5.66	0.00	-5.66	-24.90
Ramagundam Floating solar	10.24	0.00	-10.24	4.46	0.00	-4.46	-14.70
SEIL ENERGY INDIA LIMITED	108.59	0.00	-108.59	76.96	0.00	-76.96	-185.54
SEIL Energy India Limited Project II	106.76	0.00	-106.76	7.85	0.00	-7.85	-114.62
SEMBCORP ENERGY INDIA LIMITED	58.93	0.00	-58.93	0.00	0.00	0.00	-58.93
Sembcorp Energy India Limited Project II	0.85	0.00	-0.85	0.00	0.00	0.00	-0.85
Serentica Renewables India 1 Private Limited	15.38	0.00	-15.38	4.76	0.00	-4.76	-20.14
Serentica Renewables India 1 Private Limited-Koppal (Infirmary)	0.00	0.00	0.00	4.25	0.00	-4.25	-4.25
Simhadri FSP 15 MW	0.00	0.00	0.00	2.33	0.00	-2.33	-2.33
Simhadri Floating solar (10 MW)	0.00	0.00	0.00	1.27	0.00	-1.27	-1.27
ADHUNIK POWER & NATURAL RESOURCES LIMITED	0.00	0.00	0.00	2.41	0.00	-2.41	-2.41
Basochhu Hydropower Plant Bhutan	0.00	0.00	0.00	35.66	0.00	-35.66	-35.66
Chuzachen HEP	0.05	0.00	-0.05	0.26	0.00	-0.26	-0.30
GMR KAMALANGA ENERGY LTD-CTU	0.00	0.00	0.00	0.89	0.00	-0.89	-0.89
IND BARATH ENERGY UTKAL LIMITED	105.40	0.00	-105.40	31.69	0.00	-31.69	-137.10
JORETHANG LOOP HEP, DANS ENERGY PRIVATE LIMITED	0.05	0.00	-0.05	2.07	0.00	-2.07	-2.12
Jindal India Thermal Power Limited	93.42	0.00	-93.42	211.32	0.00	-211.32	-304.74
KANTI BIJLEE UTPADAN NIGAM LIMITED	33.59	0.00	-33.59	14.83	0.00	-14.83	-48.42
MAITHON POWER LIMITED	0.00	0.00	0.00	4.99	0.00	-4.99	-4.99
NABINAGAR POWER GENERATING COMPANY LIMITED	212.20	0.00	-212.20	56.17	0.00	-56.17	-268.37
NEPAL ELECTRICITY AUTHORITY MUZAFFARPUR	0.00	0.00	0.00	362.91	0.00	-362.91	-362.91
NTPC BARH Stage I	0.00	0.00	0.00	3.18	0.00	-3.18	-3.18
NTPC BARH Stage II	87.90	0.00	-87.90	21.35	0.00	-21.35	-109.25
NTPC Darlipali	18.75	0.00	-18.75	4.52	0.00	-4.52	-23.27
NTPC Farakka stage I	0.00	0.00	0.00	42.43	0.00	-42.43	-42.43
NTPC Farakka stage III	0.00	0.00	0.00	13.09	0.00	-13.09	-13.09
NTPC Kahalgaon stage I	0.00	0.00	0.00	12.10	0.00	-12.10	-12.10
NTPC Kahalgaon stage II	0.48	0.00	-0.48	18.08	0.00	-18.08	-18.56
NTPC North Karanpura STPS	81.68	0.00	-81.68	29.11	0.00	-29.11	-110.78
NTPC Talcher Stage I	56.31	0.00	-56.31	20.79	0.00	-20.79	-77.10
NTPP BRBCL	0.00	0.00	0.00	9.83	0.00	-9.83	-9.83
Nikachhu Hydropower Project	0.00	0.00	0.00	20.55	0.00	-20.55	-20.55
Tashiding HEP, Shiga Energy Private Limited	0.33	0.00	-0.33	1.21	0.00	-1.21	-1.54
NEA Likhu-2 Hydropower Project	4.89	0.00	-4.89	0.00	0.00	0.00	-4.89
AGARTALA GAS BASED POWER STATION	0.14	0.00	-0.14	0.74	0.00	-0.74	-0.87
ASSAM GAS BASED POWER STATION	0.39	0.00	-0.39	1.44	0.00	-1.44	-1.83
Bongaigaon Thermal Power Station NTPC	0.72	0.00	-0.72	9.86	0.00	-9.86	-10.58
KAMENG HYDRO POWER STATION	125.95	0.00	-125.95	0.48	0.00	-0.48	-126.43
Palatana Plant	11.16	0.00	-11.16	7.20	0.00	-7.20	-18.36
<i>Source: NLDC</i>							
<i>* in case of a state, the entities which are "selling" also include generators connected to state grid and the entities which are "buying" also include open access consumers.</i>							
<i>** (-) indicates sale and (+) indicates purchase.</i>							
<i>*** Total net includes net of transactions through bilateral and power exchanges</i>							

Table-33: VOLUME AND CHARGES UNDER DSM (DAY-WISE), AUGUST 2024

Date	Volume (MU)	All India Grid Charges (₹/kWh)		
		Minimum	Maximum	Average
1-Aug-24	117.76	2.00	10.00	6.76
2-Aug-24	106.04	2.00	10.00	5.20
3-Aug-24	97.85	2.00	10.00	4.78
4-Aug-24	98.70	0.90	10.00	3.08
5-Aug-24	109.08	1.70	10.00	4.82
6-Aug-24	112.01	0.95	10.00	4.88
7-Aug-24	113.15	2.00	10.00	4.99
8-Aug-24	106.40	1.85	10.00	4.56
9-Aug-24	102.92	1.83	10.00	4.28
10-Aug-24	110.05	1.90	10.00	4.27
11-Aug-24	108.33	1.87	7.51	3.39
12-Aug-24	104.82	2.00	10.00	4.75
13-Aug-24	106.10	2.04	10.00	5.38
14-Aug-24	104.18	3.65	10.00	6.71
15-Aug-24	113.30	1.00	10.00	5.39
16-Aug-24	102.09	2.99	10.00	6.10
17-Aug-24	105.23	2.30	10.00	5.46
18-Aug-24	104.45	1.01	10.00	4.38
19-Aug-24	106.67	2.04	10.00	4.81
20-Aug-24	106.10	2.00	10.00	4.74
21-Aug-24	107.85	1.73	10.00	4.90
22-Aug-24	107.10	1.87	10.00	4.90
23-Aug-24	113.97	1.16	10.00	4.57
24-Aug-24	111.87	1.00	10.00	4.07
25-Aug-24	120.76	0.50	10.00	2.57
26-Aug-24	121.14	0.93	10.00	2.95
27-Aug-24	114.73	0.68	10.00	2.72
28-Aug-24	103.09	1.23	10.00	3.67
29-Aug-24	111.11	0.80	10.00	3.38
30-Aug-24	105.34	0.80	10.00	4.31
31-Aug-24	97.84	1.60	10.00	4.69
Total	3350.04	0.50[#]	10.00[#]	4.56
<i>Source: NLDC</i>				
<i># Maximum/Minimum in the month</i>				

Table-34: VOLUME OF ELECTRICITY UNDER DRAWAL/ OVER INJECTION (EXPORTED) UNDER DSM, AUGUST 2024

Name of the Entity	Volume of Under drawal/ Over injection (MUs)	% of Volume
Kameng HEP	227.20	6.43
Rajasthan	176.30	4.99
Gujarat	156.22	4.42
Punjab	151.03	4.27
Maharashtra	125.06	3.54
Madhya Pradesh	121.13	3.43
Tamil Nadu	102.91	2.91
Ranganadi HEP	100.50	2.84
Haryana	93.00	2.63
Karnataka	78.00	2.21
PALATANA	76.13	2.15
Telangana	71.15	2.01
Jammu & Kashmir	67.58	1.91
Andhra Pradesh	64.16	1.82
Uttar Pradesh	60.19	1.70
Chattisgarh	60.09	1.70
Bihar	41.61	1.18
Delhi	38.61	1.09
Pare HEP	38.42	1.09
DVC Beneficiary	33.47	0.95
ADANI RENEWABLE ENERGY HOLDING FOUR LIMITED	32.76	0.93
Assam Gas Based Power Plant(Kathalguri)	31.82	0.90
Sasan Ultra Mega Power Project	29.94	0.85
NTPC KUDGI	29.33	0.83
JHARKHAND Beneficiary	27.42	0.78
Ramagundam	27.42	0.78
Himachal Pradesh	27.41	0.78
TANDA STAGE #2	26.75	0.76
NTPC Solapur Thermal Power Station Stage-1	21.04	0.60
Odisha	21.01	0.59
Adani Solar Energy Jaisalmer One Private Limited WIND	20.28	0.57
IGSTPS JHAJJAR	18.76	0.53
Uttarakhand	17.50	0.50
Jindal Power Ltd. Stage-2	17.32	0.49
URI	16.59	0.47
NAPTHA JHAKRI HEP	16.04	0.45
Telangana super thermal power plant	15.82	0.45
Adani Solar Energy Jaisalmer Four Private Limited SOLAR	15.75	0.45
ARCELORMITTAL NIPPON STEEL INDIA LTD. Beneficiary	15.47	0.44
ReNew Surya Roshni Pvt Ltd	13.84	0.39
Agartala Gas Turbine Power Plant	13.50	0.38
NEPAL NVVN	13.28	0.38
Adani Green Energy Ltd	13.16	0.37
Kerala	13.01	0.37
DADRI TPS#2	12.91	0.37
West Bengal	12.88	0.36
DADRI TPS#1	12.82	0.36
NTPC Mauda Super Thermal Power Station	12.76	0.36
Kopili-2 HEP	12.22	0.35
NTPC Khargone Super Thermal Power Plant	12.02	0.34
NTPC Mauda Super Thermal Power Station Stage 2	11.78	0.33
Assam	11.74	0.33
Maithon Power Ltd.	11.38	0.32
Adani Wind Energy Kutchh Four Ltd, Nakhatrana and Dedhiya	11.33	0.32
URI Stage 2	10.88	0.31
Railways	10.79	0.31
Adani Wind ENergy Kutchh One Limited	10.49	0.30
UNCHAHR 2	10.13	0.29
Pondichery	10.07	0.28
Azure Power Forty Three Private Limited	9.97	0.28
Sitac Kabini Renewables Pvt. Ltd.	9.97	0.28
Simhardi Stage-1	9.63	0.27
Rampur Hydro	9.53	0.27
INOX GREEN ENERGY SERVICES LIMITED	9.41	0.27
Mizoram	8.97	0.25
SINGRAULI TPS	8.95	0.25

UNCHAHAHAR 4	8.82	0.25
Adani Wind Energy MP One Private Limited	8.72	0.25
HIRIYUR OSTROKANNADA	8.60	0.24
Clean Solar Power (bhadla) Pvt. Ltd	8.37	0.24
SALAL Hydro	8.31	0.24
UNCHAHAHAR 1	8.10	0.23
Alfanar Energy Private Limited	7.97	0.23
NPCIL Kakrapar Atomic Power Plant	7.93	0.22
OSTRO Energy Private Limited	7.88	0.22
Tuticorin JSWRenew W Infirm	7.84	0.22
TANAKPUR	7.82	0.22
Adani Power Limited - Raipur TPP	7.80	0.22
Kolayat Solar Power Plant	7.78	0.22
Renew Power Limited SECI-II	7.71	0.22
NTPC Gadawara Super Thermal Power Plant Stage-I	7.43	0.21
Jindal Power Ltd.	7.38	0.21
RKM Power	7.32	0.21
Chandigarh	7.32	0.21
Arunachal Pradesh	7.28	0.21
AYANA RENEWABLE POWER SIX PRIVATE LIMITED	7.03	0.20
PVG Tata Power Renewable Energy Limited	6.97	0.20
ADANI HYBRID ENERGY JAILSALMER TWO LTD (SOLAR ONLY)	6.83	0.19
Ayana Renewable Power One Private Limited	6.83	0.19
JSW Renew Energy Limited Savalaperi infirm	6.80	0.19
ReNew Surya Ojas Private Limited koppal	6.75	0.19
Talcher stage 2	6.72	0.19
Dehar Hydro	6.63	0.19
Girel, Tuticorin	6.61	0.19
ReNew Wind Energy (AP2) Private Limited	6.54	0.19
Altra Xergi Power Private Limited	6.48	0.18
Green Infra Wind Energy Limited SECI-II Vadva	6.48	0.18
ACME Heergarh Powertech Private Limited	6.41	0.18
NABINAGAR STPP (NPGC)	6.40	0.18
RENEW SURYA RAVI	6.35	0.18
Simhardi Stage-2	6.30	0.18
Meghalaya	6.29	0.18
Darlipali Super Thermal Power Station	6.27	0.18
Avaada Sunce Energy Private Limited	6.25	0.18
ADANI HYBRID WIND ENERGY JAILSALMER ONE LTD	6.24	0.18
BHAKRA	6.13	0.17
Apraava Energy Private Limited (AEPL)	6.11	0.17
ADANI HYBRID ENERGY JAILSALMER ONE LTD (SOLAR ONLY)	6.04	0.17
MAHAN ENERGEN LIMITED	6.03	0.17
NLC Expansion	5.98	0.17
Ramagundam stage 3	5.97	0.17
ADANI HYBRID ENERGY JAILSALMER THREE LTD (SOLAR ONLY)	5.94	0.17
Vallur Thermal Power Station	5.93	0.17
Semcorp Energy India Limited Project-2(SGPL)	5.91	0.17
Tripura	5.90	0.17
Goa	5.87	0.17
BEEMPOW ENERGY PRIVATE LIMITED	5.82	0.16
NLCII Stage 2	5.82	0.16
Dadar & Nagar Haveli, Daman & Diu	5.76	0.16
BRBCL NABINAGAR	5.66	0.16
NEW NEYVELI THERMAL POWER PALNT	5.66	0.16
Mytrah, Tuticorin	5.65	0.16
Betam, Tuticorin	5.53	0.16
BARH I	5.52	0.16
ADYAH SOLAR ENERGY PRIVATE LIMITED	5.52	0.16
NLC Tamli Nadu Power Ltd	5.51	0.16
Orange, Tuticorin	5.50	0.16
ADANI HYBRID ENERGY JAILSALMER TWO LTD wind	5.49	0.16
Eden Renewable Cite Private Limited	5.47	0.15
NSPCL	5.33	0.15
Ananthapuramu (Sprng) Ultra Mega Solar Park	5.31	0.15
Green Infra Wind Energy Limited SECI-III Vadva	5.29	0.15
ABC RENEWABLE ENERGY PRIVATE LIMITED	5.26	0.15
NVVN Bhutan	5.16	0.15

Korba Super Thermal Power Station Stage I&II	5.11	0.14
Athena Jaipur Solar Power Pvt. Ltd.	5.10	0.14
BARH	5.06	0.14
Mahindra Renewables Pvt Ltd.	5.02	0.14
Thar Surya 1 Private Limited	4.99	0.14
ADANI HYBRID ENERGY JAILSALMER THREE LTD (Wind ONLY)	4.97	0.14
Kahalgaon stage 2	4.89	0.14
TATA POWER RENEWABLE ENERGY LIMITED	4.88	0.14
Mega Solis Renewables Private Limited	4.87	0.14
Masaya Solar Energy Private Limited	4.87	0.14
Serentica Renewables India 4 Private Limited	4.86	0.14
Ayana, NPKUNTA	4.83	0.14
NTPC Vindhyachal Super Thermal Power Station Stage I	4.78	0.14
Adani Power Limited - Raigarh TPP	4.73	0.13
Adani NPKUNTA SOLAR	4.71	0.13
Moser Baer Power (MB Power) MP Limited	4.71	0.13
ReNew Sun Bright Private Limited	4.63	0.13
ReNew Solar Urja Pvt Ltd	4.63	0.13
ELECTRO SOLAIRE PVT. LTD.	4.60	0.13
Avaada Sustainable RJProject Private Limited	4.59	0.13
NTPC Lara	4.55	0.13
Tehri Hydro	4.54	0.13
Azure Power Forty One Private Limited	4.54	0.13
Avikiran Solar India Private Limited	4.53	0.13
ACME Chittorgarh Solar Energy Private Limited	4.47	0.13
Renew Solar Power Private Limited Bikaner	4.43	0.13
Renew Surya Aayan Private Limited	4.42	0.13
Srijan Energy	4.39	0.12
Avaada Sunrays Energy Private Limited	4.37	0.12
DEVIKOT SOLAR	4.26	0.12
RENEW SOLAR ENERGY (JHARKHAND) PRIVATE LIMITED	4.26	0.12
NTPC Sipat Thermal Power Station Stage-1	4.25	0.12
Parbati 3	4.24	0.12
Avaada RJHN Private Limited	4.22	0.12
Fortum Solar	4.18	0.12
Netra Wind Private Limited	4.16	0.12
NTPC North Karanpura STPS	4.10	0.12
NTPC Farakka	4.03	0.11
Karacham Wangtoo	3.99	0.11
NTPC Rihand stage 2	3.92	0.11
Mega Suryaaurja Pvt Ltd	3.86	0.11
Renew Sun wave Pvt. Ltd. Fatehgarh2	3.83	0.11
Bongaigaon TPP(NTPC)	3.76	0.11
Arinsun Clean Energy Private Ltd	3.74	0.11
JPNIGRIE (JNSTPP)	3.71	0.10
Renew Surya Vihaan Private Limited	3.70	0.10
TATA POWER GREEN Energy Limited	3.56	0.10
NTPC, NPKunta	3.55	0.10
Azure Power Maple Private Limited	3.54	0.10
Bairasuil Hydro Power	3.41	0.10
NTPC ETTAYAPURAM SOLAR PLANT	3.40	0.10
RISING SUN ENENERGY PVT LIMITED	3.39	0.10
Ratnagiri Gas and Power PVT Limited	3.37	0.10
DULHASTI Hydro power	3.28	0.09
NTPC Vindhyachal Super Thermal Power Station Stage 2	3.27	0.09
Rihand Stage 3	3.27	0.09
Torrent Solargen Ltd (Torrent Power Ltd)	3.26	0.09
Adani Renewable (RJ) Ltd	3.24	0.09
RENEW SURYA PRATAP	3.19	0.09
Nagaland	3.15	0.09
Talcher stage 1	3.15	0.09
AVAADA SUNSHINE ENERGY PRIVATE LIMITED	3.15	0.09
GRT Jewellers (India) Private Limited GRTIJPL	3.13	0.09
BALCO CTU	3.12	0.09
Adani Solar Energy Jaisalmer One Private Limited	3.09	0.09
Chamera 1	3.09	0.09
Nokhra Solar	3.07	0.09
NTPC Vindhyachal Super Thermal Power Station Stage 5	3.05	0.09
DP Power	3.04	0.09

Nepal	3.03	0.09
Adani Solar Energy Jaisalmer Two Private Limited, bhadla	2.99	0.08
Manipur	2.98	0.08
Azure Solar	2.98	0.08
Unchahar stage 3	2.94	0.08
NTPC RAMAGUNDAM FLOATING SOLAR PLANT	2.90	0.08
Adani Solar Energy Jaisalmer Five Private Limited	2.85	0.08
Baba Atomic research Centre	2.84	0.08
Koteshwar hps	2.80	0.08
NTPC Vindhyachal Super Thermal Power Station Stage 3	2.80	0.08
RAP-B	2.77	0.08
Farakka stage 3	2.72	0.08
NTPC Vindhyachal Super Thermal Power Station Stage 4	2.71	0.08
Kahalgaoon stage 1	2.68	0.08
SKS Power	2.63	0.07
Rihand Stage 1	2.60	0.07
Adani Solar Energy Jaisalmer Two Private Limited (Project-2)	2.57	0.07
Pong Hydro Power	2.52	0.07
BALCO	2.44	0.07
NLCII Stage 1	2.44	0.07
Jindal India Thermal Power Ltd.	2.43	0.07
ADANI SOLAR ENERGY KA NINE PRIVATE LIMITED	2.42	0.07
Sipat Stage 2	2.38	0.07
TPSL Banderwala	2.32	0.07
Serentica Renewables India 1 Private Limited	2.32	0.07
LANCO AMARKANTAK	2.31	0.07
Adept Renewable Technologies Private Limited	2.26	0.06
Rongnichu Hydro Electric Project	2.25	0.06
TPCL Mundra Thermal Power Station (formerly CGPL)	2.24	0.06
Singoli Bhatwari HEP	2.24	0.06
Chamera 2	2.24	0.06
Avaada Solar, Pavagada	2.19	0.06
GMR Warora Energy Ltd.	2.19	0.06
PARAMPUJYA SOALR ENERGY PVT LTD	2.16	0.06
DHAULIGANGA HEP	2.15	0.06
AD hydro power	2.13	0.06
GUJARAT INDUSTRIES POWER COMPANY LTD	2.12	0.06
AMP Energy Green Five Private Limited	2.11	0.06
Azure Power Pavagada	2.08	0.06
Meenakshi Energy Limited	2.07	0.06
KSK mahanadi	2.06	0.06
TATA POWER RENEWABLE ENERGY LTD, Radhanesda	2.04	0.06
Adani Solar Energy Jaisalmer Two Private Limited Solar	2.00	0.06
SIMHAPURI(SEPL)	1.98	0.06
Avaada solarize	1.95	0.06
Gujarat State Electricity Corporation Limited, Radhanesda	1.89	0.05
Jhabua	1.87	0.05
Mejia Thermal Power station stage 2	1.86	0.05
Adani Solar Energy Jaisalmer Two Private Limited	1.82	0.05
AMP Energy Green Six Private Limited	1.82	0.05
JSW RENEW ENERGY TWO LIMITED (KARUR)	1.78	0.05
ILFS	1.77	0.05
NFL	1.75	0.05
Grian Energy Private Limited	1.72	0.05
ACB (India) Ltd.	1.70	0.05
NAPP	1.66	0.05
AMPLUS Pavagada	1.66	0.05
TATA, Npkunta	1.65	0.05
TP Saurya	1.65	0.05
Powerica	1.62	0.05
OneVolt Energy Private Limited	1.60	0.05
SJVN	1.59	0.04
Chamera 3	1.58	0.04
Fortum finsurya	1.48	0.04
SIKKIM Beneficiary	1.46	0.04
JSW Energy Utkal Ltd	1.44	0.04
Korba Super Thermal Power Station Stage III	1.39	0.04
Gujarat State Electricity Corporation Limited phase-2	1.38	0.04
TRN Energy	1.30	0.04
NTPC Jhanor-Gandhar Gas Power plant	1.27	0.04

Railways ER	1.25	0.04
Kishanganga HEP	1.25	0.04
Jindal Steel & power Ltd. (Dangamahua CPP)	1.25	0.04
Transition Energy	1.22	0.03
Sewa 2 Hydro Power	1.14	0.03
GMR Kamalanga Energy Ltd.	1.12	0.03
Koldam Hydro Power	1.11	0.03
ReNew Solar Power Private Limited	1.10	0.03
Sainj Hydro Power	1.06	0.03
NTPC Kawas Gas Plant	1.00	0.03
INDIGRID SOLAR-II (AP) PRIVATE LIMITED	0.98	0.03
NLCTSI EXPANSION 2	0.96	0.03
PVG AMPLUS PAVAGADA	0.96	0.03
RAP-C	0.95	0.03
PVG AMPLUS TUMKUR	0.93	0.03
Athena Bhiwadi Solar Power Pvt. Ltd	0.91	0.03
Adani Solar Energy Four Private Limited	0.91	0.03
Athena Kamal Solar Power Pvt. Ltd	0.87	0.02
Spring, Pugalur	0.86	0.02
KREDL, Pavagada	0.86	0.02
Bangladesh	0.84	0.02
Yarrow, Pavagada	0.81	0.02
Sorang HEP	0.80	0.02
COASTAL ENERGEN PVT LTD	0.78	0.02
Athena Hisar Solar Power Pvt. Ltd	0.77	0.02
Shree Cement Ltd	0.77	0.02
Adhunik Power & Natural Resources Ltd	0.76	0.02
Renew Power pavagada	0.73	0.02
IRCON RENEWABLE POWER LIMITED PAVAGADA	0.72	0.02
INDIGRID SOLAR-I (AP) PRIVATE LIMITED	0.72	0.02
Loktak HEP	0.71	0.02
Powergrid HVDC	0.69	0.02
Sherisha Rooftop Solar SPV Four Private Limited	0.68	0.02
Azure Npkunta	0.67	0.02
NTPC Kawas Solar	0.61	0.02
Serentica Renewables India 1 Private Limited- Koppal (Infirm)	0.57	0.02
Kopili HEP	0.52	0.01
Jorethang Loop Hydro Electric Project	0.47	0.01
Lanco Budhil	0.47	0.01
ADANI SOLAR ENERGY RJ TWO PRIVATE LIMITED INF	0.46	0.01
Dhariwal Infrastructure	0.45	0.01
RANGIT	0.45	0.01
Simhadari Floating Solar	0.41	0.01
Auraiya Solar	0.37	0.01
DGEN Mega Power Project	0.33	0.01
Doyang HEP	0.33	0.01
Unchahar Solar	0.32	0.01
Singrauli Solar	0.31	0.01
Gandhar Solar	0.30	0.01
Chuzachen	0.29	0.01
RENEW SURYA OJAS PVT LIMITED	0.24	0.01
Transition Green Energy Private Limited	0.19	0.01
Tashiding Hydro Power	0.15	0.004
Talcher Solar	0.11	0.003
Power grid HVDC	0.11	0.003
SINGRAULI HYDRO	0.07	0.002
Dadri Solar	0.05	0.002
JSW RENEW ENERGY TWO LTD	0.002	0.0001
Total	3534.47	100.00
Volume Exported by top 5 Regional Entities	835.81	23.65

Source: NLDC

Table-35: VOLUME OF ELECTRICITY OVER DRAWAL/ UNDER INJECTION (IMPORTED) UNDER DSM, AUGUST 2024

Name of the Entity	Volume of Over drawal/ Under Injection (MUs)	% of Volume
Uttar Pradesh	146.11	4.62
Tamil Nadu	74.22	2.34
Gujarat	69.93	2.21
West Bengal	68.47	2.16
Bihar	62.96	1.99
Rajasthan	61.83	1.95
Odisha	58.03	1.83
Karnataka	56.91	1.80
ADANI RENEWABLE ENERGY HOLDING FOUR LIMITED	54.48	1.72
Andhra Pradesh	52.18	1.65
Maharashtra	48.96	1.55
Telangana	47.34	1.50
Madhya Pradesh	40.73	1.29
Uttarakhand	38.86	1.23
JHARKHAND Beneficiary	36.59	1.16
Rihand Stage 1	35.67	1.13
Haryana	32.61	1.03
Spring, Pugalur	31.85	1.01
TANDA STAGE #2	28.38	0.90
Kerala	28.26	0.89
ARCELORMITTAL NIPPON STEEL INDIA LTD. Beneficiary	27.18	0.86
NEPAL NVVN	26.27	0.83
Adani Wind ENergy Kutchh One Limited	25.32	0.80
Punjab	24.72	0.78
NTPC Khargone Super Thermal Power Plant	24.12	0.76
ReNew Surya Roshni Pvt Ltd	22.78	0.72
Assam	22.73	0.72
DVC Beneficiary	22.19	0.70
Telangana super thermal power plant	21.64	0.68
Chattisgarh	21.15	0.67
Delhi	20.89	0.66
Vallur Thermal Power Station	20.38	0.64
NVVN Bhutan	20.30	0.64
BARH	20.15	0.64
Jammu & Kashmir	20.14	0.64
Adani Solar Energy Jaisalmer One Private Limited WIND	20.00	0.63
NABINAGAR STPP (NPGC)	19.95	0.63
TPCL Mundra Thermal Power Station (formerly CGPL)	19.47	0.62
Tuticorin JSWRenew W Infirm	19.12	0.60
Kahalgaoon stage 2	19.00	0.60
SINGRAULI TPS	18.80	0.59
Korba Super Thermal Power Station Stage I&II	18.16	0.57
IGSTPS JHAJJAR	18.08	0.57
AYANA RENEWABLE POWER SIX PRIVATE LIMITED	17.09	0.54
Ramagundam	17.02	0.54
ReNew Surya Ojas Private Limited koppal	16.95	0.54
Rihand Stage 3	16.79	0.53
NTPC Lara	16.70	0.53
Girel, Tuticorin	16.64	0.53
HIRIYUR OSTROKANNADA	16.29	0.51
JSW Energy Utkal Ltd	16.09	0.51
BARH I	15.99	0.51
INOX GREEN ENERGY SERVICES LIMITED	15.89	0.50
Kahalgaoon stage 1	15.53	0.49
Clean Solar Power (bhadla) Pvt. Ltd	15.53	0.49
Mytrah, Tuticorin	15.37	0.49
NTPC Sipat Thermal Power Station Stage-1	15.26	0.48
NTPC KUDGI	15.12	0.48
BALCO CTU	14.73	0.47
Adani Wind Energy MP One Private Limited	14.59	0.46
Adani Solar Energy Jaisalmer Four Private Limited SOLAR	14.34	0.45
Azure Power Forty Three Private Limited	14.30	0.45
NTPC Rihand stage 2	14.13	0.45
Jindal Power Ltd.	14.06	0.44
NTPC Mauda Super Thermal Power Station Stage 2	13.62	0.43
Kolayat Solar Power Plant	13.44	0.42

Betam, Tuticorin	13.01	0.41
JPNIGRIE (JNSTPP)	13.01	0.41
Adani Wind Energy Kutchh Four Ltd, Nakhatrana and Dedhiya	12.91	0.41
NTPC Gadarwara Super Thermal Power Plant Stage-I	12.88	0.41
Jindal Power Ltd. Stage-2	12.71	0.40
Talcher stage 2	12.54	0.40
OSTRO Energy Private Limited	12.39	0.39
NTPC North Karanpura STPS	12.23	0.39
Orange, Tuticorin	12.04	0.38
Sipat Stage 2	11.94	0.38
NTPC Mauda Super Thermal Power Station	11.93	0.38
Semcorp Energy India Limited Project-2(SGPL)	11.88	0.38
Adani Green Energy Ltd	11.83	0.37
NTPC Farakka	11.79	0.37
Simhardi Stage-1	11.76	0.37
Nokhra Solar	11.24	0.36
DADRI TPS#2	11.19	0.35
Renew Power Limited SECI-II	10.88	0.34
Goa	10.75	0.34
Alfanar Energy Private Limited	10.69	0.34
NTPC Vindhychal Super Thermal Power Station Stage 4	10.65	0.34
ReNew Wind Energy (AP2) Private Limited	10.61	0.34
Adani Solar Energy Jaisalmer One Private Limited	10.47	0.33
NTPC Solapur Thermal Power Station Stage-1	10.22	0.32
ADANI HYBRID ENERGY JAILSALMER ONE LTD (SOLAR ONLY)	10.13	0.32
JSW Renew Energy Limited Savalaperi infirm	10.11	0.32
Avaada Sunrays Energy Private Limited	9.99	0.32
ABC RENEWABLE ENERGY PRIVATE LIMITED	9.73	0.31
Moser Baer Power (MB Power) MP Limited	9.64	0.30
NTPC Vindhychal Super Thermal Power Station Stage 2	9.64	0.30
Green Infra Wind Energy Limited SECI-II Vadva	9.39	0.30
KHURJA STPP	8.97	0.28
ADANI HYBRID ENERGY JAILSALMER TWO LTD (SOLAR ONLY)	8.84	0.28
Azure Power Maple Private Limited	8.67	0.27
Altra Xergi Power Private Limited	8.67	0.27
Simhardi Stage-2	8.65	0.27
Avaada Sunce Energy Private Limited	8.64	0.27
ADANI HYBRID ENERGY JAILSALMER THREE LTD (SOLAR ONLY)	8.53	0.27
Himachal Pradesh	8.43	0.27
Avaada Sustainable RJProject Private Limited	8.43	0.27
Adani Solar Energy Jaisalmer Two Private Limited	8.39	0.27
TATA POWER RENEWABLE ENERGY LIMITED	8.25	0.26
Thar Surya 1 Private Limited	8.24	0.26
ReNew Sun Bright Private Limited	8.24	0.26
Ramagundam stage 3	8.22	0.26
BEEMPOW ENERGY PRIVATE LIMITED	8.18	0.26
RENEW SURYA RAVI	8.17	0.26
Chandigarh	8.15	0.26
Green Infra Wind Energy Limited SECI-III Vadva	8.13	0.26
Apraava Energy Private Limited (AEPL)	8.10	0.26
PVG Tata Power Renewable Energy Limited	8.09	0.26
Korba Super Thermal Power Station Stage III	8.02	0.25
Shree Cement Ltd	7.94	0.25
RENEW SURYA PRATAP	7.94	0.25
Sitac Kabini Renewables Pvt. Ltd.	7.79	0.25
RENEW SOLAR ENERGY (JHARKHAND) PRIVATE LIMITED	7.73	0.24
Mahindra Renewables Pvt Ltd.	7.62	0.24
ReNew Solar Urja Pvt Ltd	7.62	0.24
Arinsun Clean Energy Private Ltd	7.59	0.24
BRBCL NABINAGAR	7.58	0.24
ACME Heergarh Powertech Private Limited	7.54	0.24
Ayana Renewable Power One Private Limited	7.51	0.24
Azure Power Forty One Private Limited	7.50	0.24
Athena Jaipur Solar Power Pvt. Ltd.	7.47	0.24
Masaya Solar Energy Private Limited	7.47	0.24
Renew Sun wave Pvt. Ltd. Fatehgarh2	7.38	0.23
Renew Surya Aayan Private Limited	7.34	0.23
Tripura	7.33	0.23

Tehri Hydro	7.32	0.23
DADRI TPS#1	7.30	0.23
Mega Suryaurja Pvt Ltd	7.28	0.23
Renew Solar Power Private Limited Bikaner	7.18	0.23
Sasan Ultra Mega Power Project	7.12	0.23
UNCHA HAR 2	7.11	0.22
Eden Renewable Cite Private Limited	7.01	0.22
NTPC ETTAYAPURAM SOLAR PLANT	6.95	0.22
NTPC Vindhyachal Super Thermal Power Station Stage 1	6.91	0.22
ADANI HYBRID WIND ENERGY JAILSALMER ONE LTD	6.83	0.22
Bongaigaon TPP(NTPC)	6.73	0.21
Talcher stage 1	6.55	0.21
Ayana, NPKUNTA	6.51	0.21
NTPC Vindhyachal Super Thermal Power Station Stage 3	6.49	0.21
Adept Renewable Technologies Private Limited	6.42	0.20
Avikiran Solar India Private Limited	6.39	0.20
ACME Chittorgarh Solar Energy Private Limited	6.38	0.20
Mega Solis Renewables Private Limited	6.38	0.20
TATA POWER GREEN Energy Limited	6.37	0.20
UNCHA HAR 4	6.34	0.20
OneVolt Energy Private Limited	6.32	0.20
UNCHA HAR 1	6.25	0.20
ADYAH SOLAR ENERGY PRIVATE LIMITED	6.23	0.20
Dadar & Nagar Haveli, Daman & Diu	6.22	0.20
Adani Solar Energy Jaisalmer Two Private Limited Solar	6.12	0.19
RISING SUN ENENERGY PVT LIMITED	6.09	0.19
Adani NPKUNTA SOLAR	6.05	0.19
Transition Energy	6.02	0.19
ADANI SOLAR ENERGY RJ TWO PRIVATE LIMITED_INF	6.01	0.19
Grian Energy Private Limited	5.98	0.19
Netra Wind Private Limited	5.97	0.19
AMPLUS Pavagada	5.94	0.19
Adani Solar Energy Jaisalmer Five Private Limited	5.92	0.19
Avaada RJHN Private Limited	5.80	0.18
SIKKIM Beneficiary	5.78	0.18
NTPC Vindhyachal Super Thermal Power Station Stage 5	5.75	0.18
NLC Tamli Nadu Power Ltd	5.71	0.18
Darlipali Super Thermal Power Station	5.68	0.18
NLCII Stage 2	5.67	0.18
AVAADA SUNSHINE ENERGY PRIVATE LIMITED	5.64	0.18
DEVIKOT SOLAR	5.53	0.17
Serentica Renewables India 4 Private Limited	5.52	0.17
Ananthapuramu (Sprng) Ultra Mega Solar Park	5.52	0.17
Srijan Energy	5.50	0.17
Adani Renewable (RJ) Ltd	5.31	0.17
ADANI SOLAR ENERGY KA NINE PRIVATE LIMITED	5.29	0.17
Sorang HEP	5.20	0.16
Fortum Solar	5.01	0.16
Renew Surya Vihaan Private Limited	4.86	0.15
Dhariwal Infrastructure	4.86	0.15
Jindal India Thermal Power Ltd.	4.83	0.15
AMP Energy Green Six Private Limited	4.73	0.15
Azure Solar	4.62	0.15
ELECTRO SOLAIRE PVT. LTD.	4.59	0.15
Adani Power Limited - Raipur TPP	4.59	0.15
Rapp 7&8	4.59	0.15
Arunachal Pradesh	4.54	0.14
URI	4.53	0.14
TPSL Banderwala	4.44	0.14
Jhabua	4.35	0.14
DP Power	4.34	0.14
Torrent Solargen Ltd (Torrent Power Ltd)	4.33	0.14
ADANI HYBRID ENERGY JAILSALMER THREE LTD (Wind ONLY)	4.22	0.13
Mejia Thermal Power station stage 2	4.20	0.13
ADANI HYBRID ENERGY JAILSALMER TWO LTD wind	4.10	0.13
Adani Solar Energy Jaisalmer Two Private Limited (Project-2)	4.09	0.13
NTPC, NPKunta	4.08	0.13
Serentica Renewables India 1 Private Limited	4.08	0.13
NSPCL	4.04	0.13

Adani Solar Energy Jaisalmer Two Private Limited, bhadla	3.95	0.12
ACB (India) Ltd.	3.92	0.12
AMP Energy Green Five Private Limited	3.80	0.12
NEW NEYVELI THERMAL POWER PALNT	3.75	0.12
Bangladesh	3.73	0.12
RKM Power	3.72	0.12
PARAMPUJYA SOALR ENERGY PVT LTD	3.70	0.12
NLCTSII EXPANSION 2	3.65	0.12
NTPC RAMAGUNDAM FLOATING SOLAR PLANT	3.59	0.11
Meenakshi Energy Limited	3.49	0.11
Avaada solarize	3.44	0.11
Avaada Solar, Pavagada	3.42	0.11
JSW RENEW ENERGY TWO LIMITED (KARUR)	3.42	0.11
SALAL Hydro	3.39	0.11
Maithon Power Ltd.	3.34	0.11
AD hydro power	3.27	0.10
Nepal	3.25	0.10
Karacham Wangtoo	3.25	0.10
TP Saurya	3.24	0.10
NLCII Stage 1	3.23	0.10
DULHASTI Hydro power	3.20	0.10
MAHAN ENERGEN LIMITED	3.18	0.10
Meghalaya	3.07	0.10
GRT Jewellers (India) Private Limited GRTJIPL	2.97	0.09
Unchahar stage 3	2.97	0.09
Manipur	2.89	0.09
COASTAL ENERGEN PVT LTD	2.67	0.08
Gujarat State Electricity Corporation Limited phase-2	2.62	0.08
Farakka stage 3	2.59	0.08
Singoli Bhatwari HEP	2.58	0.08
TATA POWER RENEWABLE ENERGY LTD, Radhanesda	2.42	0.08
Pondichery	2.37	0.08
Fortum finsurya	2.36	0.07
LANCO AMARKANTAK	2.36	0.07
GUJARAT INDUSTRIES POWER COMPANY LTD	2.29	0.07
Jindal Steel & power Ltd. (Dangamahua CPP)	2.20	0.07
SJVN	2.19	0.07
TATA, Npkunta	2.16	0.07
Azure Power Pavagada	2.12	0.07
Railways	2.09	0.07
Chuzachen	2.06	0.06
RENEW SURYA OJAS PVT LIMITED	2.03	0.06
RAP-B	2.02	0.06
NTPC Kawas Solar	1.89	0.06
Renew Power pavagada	1.88	0.06
DGEN Mega Power Project	1.88	0.06
Sewa 2 Hydro Power	1.86	0.06
NTPC Jhanor-Gandhar Gas Power plant	1.86	0.06
Powerica	1.86	0.06
ReNew Solar Power Private Limited	1.79	0.06
Ratnagiri Gas and Power PVT Limited	1.75	0.06
NTPC Kawas Gas Plant	1.71	0.05
Adani Power Limited - Raigarh TPP	1.68	0.05
Dehar Hydro	1.65	0.05
Auraiya Solar	1.64	0.05
Transition Green Energy Private Limited	1.63	0.05
DHAULIGANGA HEP	1.52	0.05
Bairasuil Hydro Power	1.50	0.05
Parbati 3	1.46	0.05
Sherisha Rooftop Solar SPV Four Private Limited	1.36	0.04
Athena Hisar Solar Power Pvt. Ltd	1.32	0.04
Railways ER	1.32	0.04
Adhunik Power & Natural Resources Ltd	1.31	0.04
Adani Solar Energy Four Private Limited	1.31	0.04
Chamera 3	1.28	0.04
Athena Kamal Solar Power Pvt. Ltd	1.26	0.04
IRCON RENEWABLE POWER LIMITED PAVAGADA	1.25	0.04
Yarrow, Pavagada	1.25	0.04
Athena Bhiwadi Solar Power Pvt. Ltd	1.25	0.04
GMR Kamalanga Energy Ltd.	1.24	0.04

INDIGRID SOLAR-I (AP) PRIVATE LIMITED	1.24	0.04
Koldam Hydro Power	1.22	0.04
KREDL, Pavagada	1.22	0.04
INDIGRID SOLAR-II (AP) PRIVATE LIMITED	1.18	0.04
PVG AMPLUS PAVAGADA	1.18	0.04
PVG AMPLUS TUMKUR	1.18	0.04
Chamera 1	1.16	0.04
Azure Npkunta	1.13	0.04
NAPP	1.13	0.04
BHAKRA	1.10	0.03
GMR Warora Energy Ltd.	1.05	0.03
SIMHAPURI(SEPL)	1.02	0.03
Assam Gas Based Power Plant(Kathalguri)	0.98	0.03
Simhadari Floating Solar	0.96	0.03
KSK mahanadi	0.89	0.03
Rongnichu Hydro Electric Project	0.87	0.03
NAPTHA JHAKRI HEP	0.87	0.03
Kopili HEP	0.85	0.03
TANAKPUR	0.84	0.03
Mizoram	0.84	0.03
Koteshwar hps	0.83	0.03
Ranganadi HEP	0.78	0.02
URI Stage 2	0.74	0.02
RAP-C	0.70	0.02
NLC Expansion	0.68	0.02
Sainj Hydro Power	0.66	0.02
Serentica Renewables India 1 Private Limited- Koppal (Infir)	0.62	0.02
Nagaland	0.62	0.02
Agartala Gas Turbine Power Plant	0.61	0.02
BALCO	0.59	0.02
SKS Power	0.58	0.02
Gandhar Solar	0.57	0.02
Lanco Kondapalli Power Ltd	0.50	0.02
Lanco Budhil	0.49	0.02
RANGIT	0.47	0.01
TRN Energy	0.47	0.01
NPCIL Kakrapar Atomic Power Plant	0.45	0.01
Gujarat State Electricity Corporation Limited, Radhanesda	0.44	0.01
Singrauli Solar	0.42	0.01
ILFS	0.36	0.01
Jorethang Loop Hydro Electric Project	0.35	0.01
Tashiding Hydro Power	0.34	0.01
Pong Hydro Power	0.31	0.01
PALATANA	0.30	0.01
Unchahar Solar	0.24	0.01
Doyang HEP	0.23	0.01
Kishanganga HEP	0.22	0.01
Talcher Solar	0.20	0.01
Dadri Solar	0.14	0.004
NFL	0.11	0.003
Chamera 2	0.08	0.002
Loktak HEP	0.08	0.002
SINGRAULI HYDRO	0.07	0.002
Pare HEP	0.06	0.002
Powergrid HVDC	0.05	0.002
JSW RENEW ENERGY TWO LTD	0.05	0.001
Rampur Hydro	0.04	0.001
Baba Atomic research Centre	0.03	0.001
Power grid HVDC	0.01	0.0002
Kameng HEP	0.004	0.0001
TOTAL	3165.60	100.00
Volume Imported by top 5 Regional Entities	421.69	13.32

Source: NLDC

Table-36: VOLUME AND PRICE OF RENEWABLE ENERGY CERTIFICATES (RECs) TRANACTED THROUGH POWER EXCHANGES AND THROUGH TRADERS (BILATERAL), AUGUST 2024

Sr. No	Details of REC Transactions	Through Power Exchange			Bilateral through Traders
		IEX	PXIL	HPX	
1	Volume of Buy Bid	3330640	3048424	123785	-
2	Volume of Sell Bid	8682762	3914776	3402884	-
3	Ratio of Buy Bid to Sell Bid Volume	0.38	0.78	0.04	-
4	Traded Volume (MWh)	2115838	1833622	118785	39814
5	Weighted Average Price (₹/MWh)	116	116	115	121

Source: Power Exchanges & Grid-India REC Report

Note: 1 REC = 1 MWh

Under the CERC REC Regulations 2022, the categorization of RECs has been dispensed with and exchange of RECs through trading licensees has also been allowed

Table-37(a): VOLUME AND PRICE OF CROSS BORDER TRADE THROUGH DAY AHEAD MARKET AT IEX, AUGUST 2024

Sr. No.	Neighbouring Country	Volume (MU)			Weighted Average Price (₹/kWh)	
		Sale	Purchase	Net*	Sale	Purchase
1	Nepal	399.21	0.00	-399.21	4.34	-
2	Bhutan	55.02	0.00	-55.02	4.82	-
	Total	454.23	0.00	-454.23	-	-

Source: IEX

* Net indicates difference of volume purchased and sold by the respective neighbouring country

Note: No Cross Border transactions were recorded in DAM at PXIL and HPX

Table-37(b): VOLUME AND PRICE OF CROSS BORDER TRADE THROUGH REAL TIME MARKET AT IEX, AUGUST 2024

Sr. No.	Neighbouring Country	Volume (MU)			Weighted Average Price (₹/kWh)	
		Sale	Purchase	Net*	Sale	Purchase
1	Nepal	7.77	0.00	-7.77	2.07	-
2	Bhutan	1.18	0.00	-1.18	6.50	-
	Total	8.95	0.00	-8.95	-	-

Source: IEX

* Net indicates difference of volume purchased and sold by the respective neighbouring country

Note: No Cross Border transactions were recorded in RTM at PXIL and HPX



Economics Division
Central Electricity Regulatory Commission
6th, 7th & 8th Floors, Tower B, World Trade Centre,
Nauroji Nagar, New Delhi- 110029